

New Dawn Developments is the exclusive Home Builder on 33 new, fully serviced city lots in Elizabeth Lake Ridge. All lots are large in size with most measuring over 65 feet wide and 105 feet deep.

Many lots offer spectacular views of nearby Elizabeth Lake and city and mountain views are also available. Bordering city limits and the established neighborhood of Parkland, Elizabeth Lake Ridge has schools, parks and nature at the doorstep all making for a perfect community for growing and playing.

All homes feature an open concept kitchen, living and dining room and have plenty of windows to let in natural light and wonderful views. Double attached garages, generous ensuite baths and walk in closets are standard.



Standard Features:

- Master suites with walk in closet and ensuite baths
- Open concept kitchens with island seating
- Double attached garage
- Delta faucets throughout
- 6" Flatstock MDF baseboard
- 4" Flatstock MDF window and door trim
- Paint grade interior doors
- Vinyl siding with smart trim accents
- Dual pane low e argon filled windows
- 96% efficient natural gas furnace
- 50 gallon natural gas water tank
- IKO Cambridge 30 year shingles
- Fiberglass exterior doors



Elizabeth Lake
RIDGE
By New Dawn Developments

'Bringing Nature Home'



**NEW DAWN
DEVELOPMENTS**

Learn More online at:
WWW.NEWDAWNDEVELOPMENTS.COM

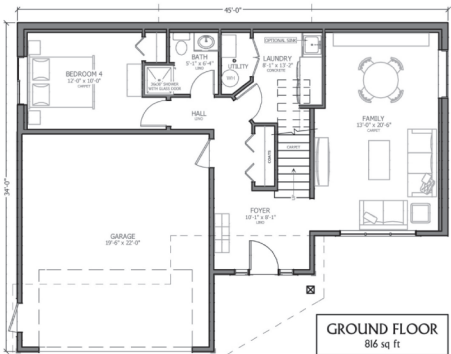
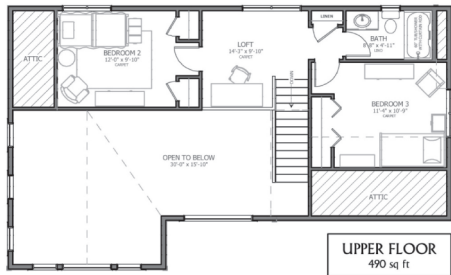
**Call Sherry Today at:
250-489-1519
or 250-426-9709**





BASE PRICE:
\$329,000.00 +Lot & Tax

The Meadowlark is a grade entry home that boasts three levels of living space. A massive window wall reaches two stories high in the living room. Outside, a raised front deck spans over 30 feet to allow for lots of outdoor entertaining space – and views! Four bedrooms, 3 1/2 baths, rec room and large kitchen combine to make this the perfect family home.



* Exterior rock an upgrade on all home designs



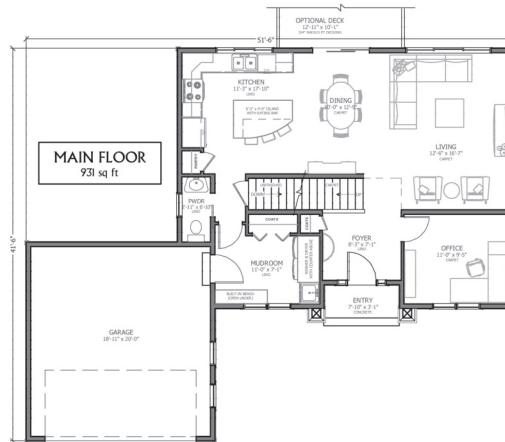
Elizabeth Lake **RIDGE** By New Dawn Developments

'Bringing Nature Home'



BASE PRICE:
\$324,000.00 +Lot & Tax

The Bluebird is a traditional two story design with an office on the main level and a very spacious laundry/mudroom off the garage. Stairs lead from the open, two story foyer to the second level where all 3 bedrooms are located. The master retreat showcases an amazing ensuite with a large walk in closet and option for a free standing bathtub.



* Exterior rock an upgrade on all home designs



BASE PRICE:
\$249,000.00 +Lot & Tax

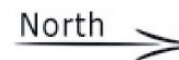
The Waxwing is a 3 bedroom bungalow design with a welcoming covered front porch. A walk through laundry/mudroom off the garage leads into the kitchen for easy grocery delivery. A large island holds the kitchen sink and offers casual seating at the attached eating bar.



* Exterior rock an upgrade on all home designs



LOT MAP



GST not included in above prices
 Prices released October 2012 and subject to change