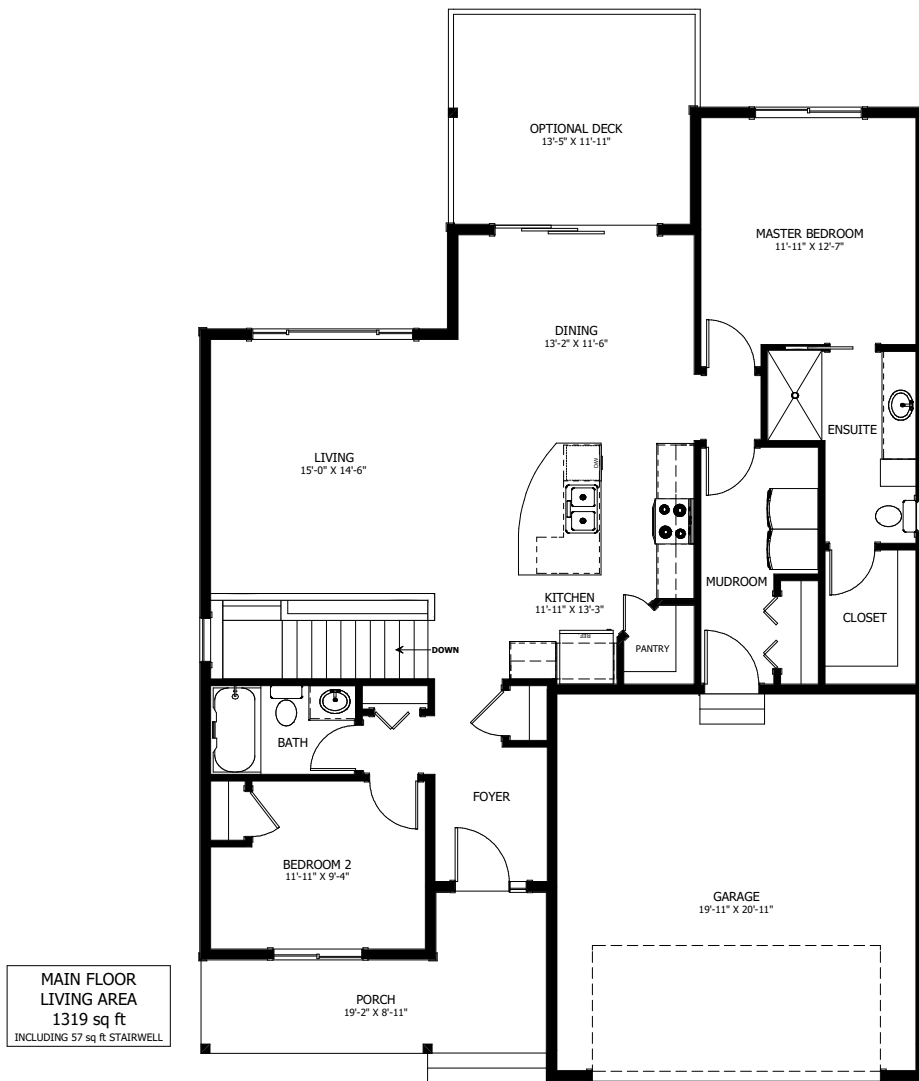


LOT 19



4 BED - 3 BATH

40'-3" X 54'-0"



NEW DAWN
DEVELOPMENTS

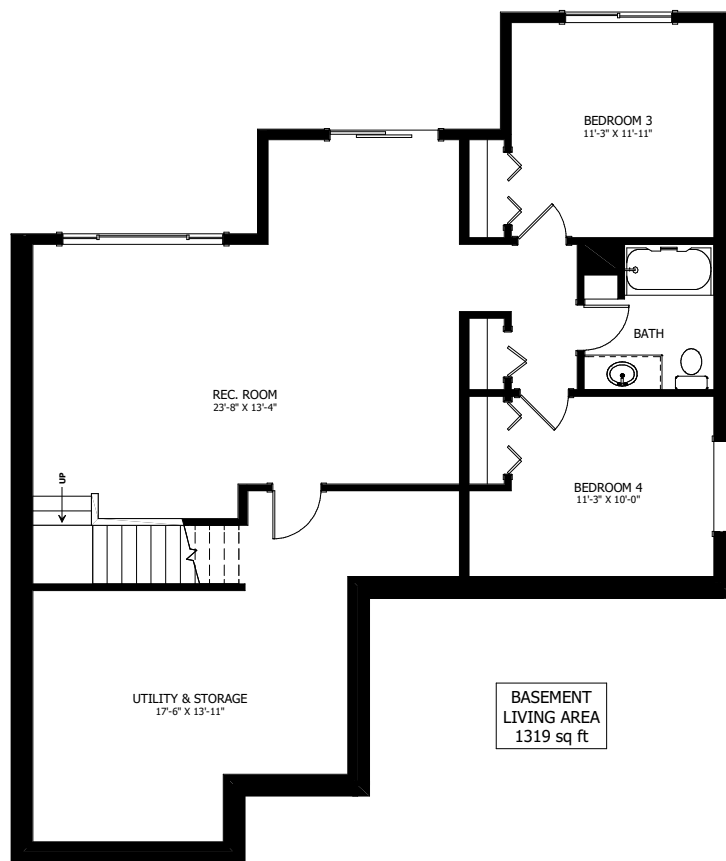
CALL US TODAY: 250-489-1519
WWW.NEWDAWNDEVELOPMENTS.COM

FLOOR PLAN HIGHLIGHTS:

- DEVELOPED BASEMENT WITH 2 BEDROOMS, REC ROOM, & BATH
- OVERSIZED FRONT PORCH
- STAIRWELL WITH OPEN TO BELOW
- 'L' SHAPED KITCHEN WITH CURVED ISLAND & CORNER PANTRY

OPTIONAL UPGRADES:

- COVERED REAR DECK
- VAULTED CEILINGS
- FIREPLACE IN LIVING ROOM
- SECOND SINK IN ENSUITE
- MUDROOM CABINETS
- EXTERIOR WOOD ACCENTS



NEW DAWN
DEVELOPMENTS

PLANS AND ELEVATIONS ARE APPROXIMATE AND DISPLAY NON-STANDARD FEATURES. ELEVATIONS MAY VARY BY COMMUNITY & THE BUILDER RESERVES THE RIGHT TO MAKE MODIFICATIONS WITHOUT NOTICE. ALL FLOOR PLANS AND ELEVATIONS ARE THE EXCLUSIVE PROPERTY OF NEW DAWN DEVELOPMENTS. ALL RIGHTS RESERVED, INCLUDING THE RIGHT OF REPRODUCTION, IN PART OR IN WHOLE. LAST UPDATED: AUGUST 2024