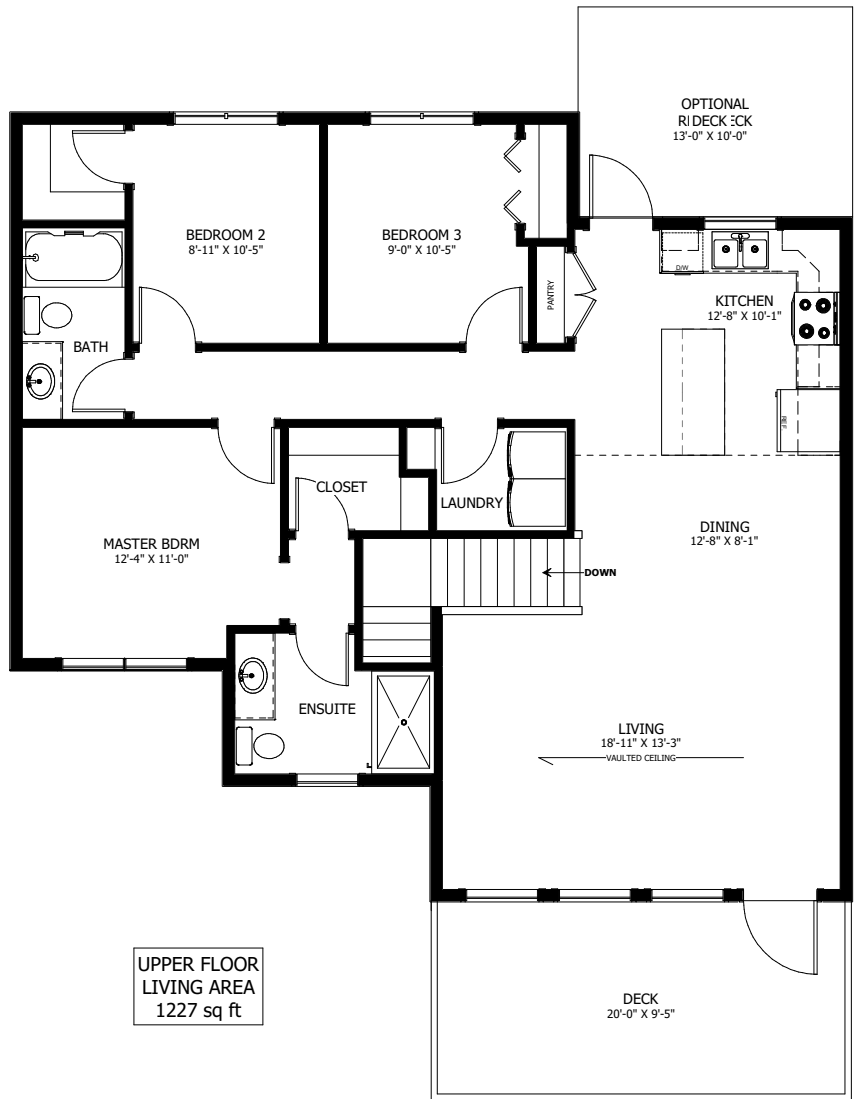


FLOOR PLAN HIGHLIGHTS:

- VAULTED CEILINGS IN LIVING AND DINING ROOM
- FRONT DECK WITH GLASS RAILING
- LIVING ROOM WINDOW WALL
- MAIN FLOOR LAUNDRY
- MODERN EXTERIOR

OPTIONAL UPGRADES:

- DEVELOPED GROUND FLOOR WITH ADDITIONAL BEDROOM & BATH
- FIREPLACE IN LIVING ROOM
- TIMBER RAILINGS
- TILED SHOWER IN MASTER ENSUITE
- REAR DECK



NEW DAWN DEVELOPMENTS

PLANS AND ELEVATIONS ARE APPROXIMATE AND DISPLAY NON-STANDARD FEATURES. ELEVATIONS MAY VARY BY COMMUNITY & THE BUILDER RESERVES THE RIGHT TO MAKE MODIFICATIONS WITHOUT NOTICE. ALL FLOOR PLANS AND ELEVATIONS ARE THE EXCLUSIVE PROPERTY OF NEW DAWN DEVELOPMENTS. ALL RIGHTS RESERVED, INCLUDING THE RIGHT OF REPRODUCTION, IN PART OR IN WHOLE. LAST UPDATED: JULY 2018