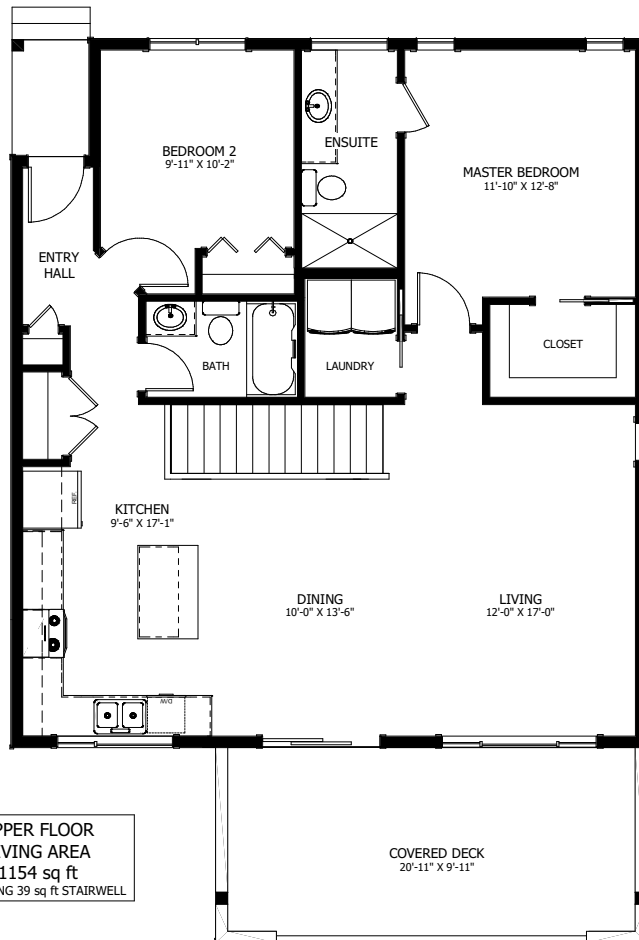




THE CARDINAL

2 + 1 BED - 2 + 1 BATH

32'-6" X 44'-3"



NEW DAWN
DEVELOPMENTS

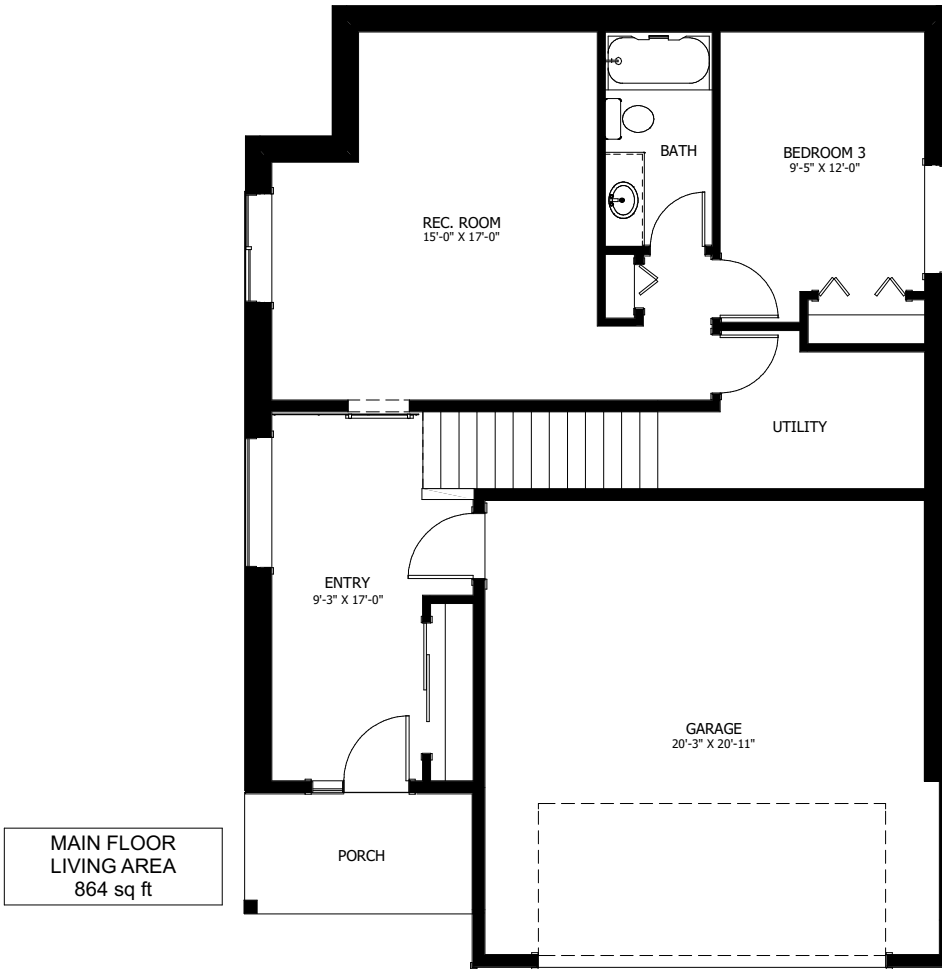
CALL US TODAY: 250-489-1519
WWW.NEWDAWNDEVELOPMENTS.COM

FLOOR PLAN HIGHLIGHTS:

- OVERSIZED FRONT ENTRY
- FRONT VIEWS
- COVERED FRONT DECK
- LARGE PANTRY
- ISLAND WITH EATING BAR
- LARGE MASTER CLOSET + ENSUITE

OPTIONAL UPGRADES:

- DEVELOPED BASEMENT WITH REC. ROOM, BEDROOM, & BATH
- VAULTED CEILING IN OPEN AREAS
- GAS FIREPLACE IN LIVING ROOM
- SECOND SINK IN ENSUITE
- RAILING AROUND STAIRWELL



NEW DAWN
DEVELOPMENTS

PLANS AND ELEVATIONS ARE APPROXIMATE AND DISPLAY NON-STANDARD FEATURES. ELEVATIONS MAY VARY BY COMMUNITY & THE BUILDER RESERVES THE RIGHT TO MAKE MODIFICATIONS WITHOUT NOTICE. ALL FLOOR PLANS AND ELEVATIONS ARE THE EXCLUSIVE PROPERTY OF NEW DAWN DEVELOPMENTS. ALL RIGHTS RESERVED, INCLUDING THE RIGHT OF REPRODUCTION, IN PART OR IN WHOLE. LAST UPDATED, MAY 2021