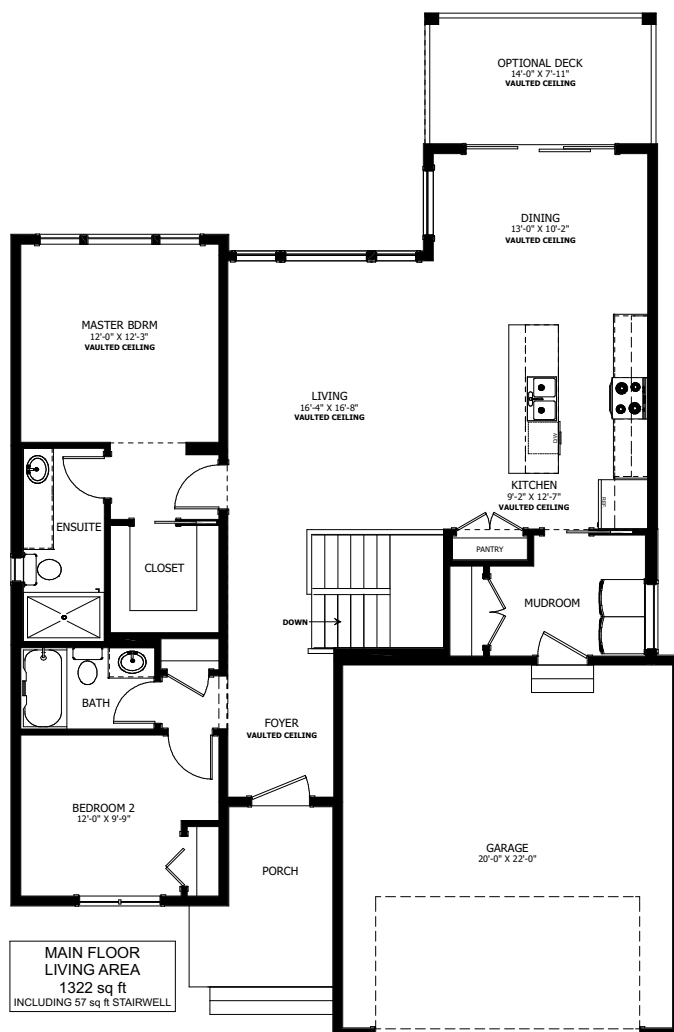


THE KINGFISHER



2 BED - 2 BATH

40'-0" X 54'-0"



NEW DAWN
DEVELOPMENTS

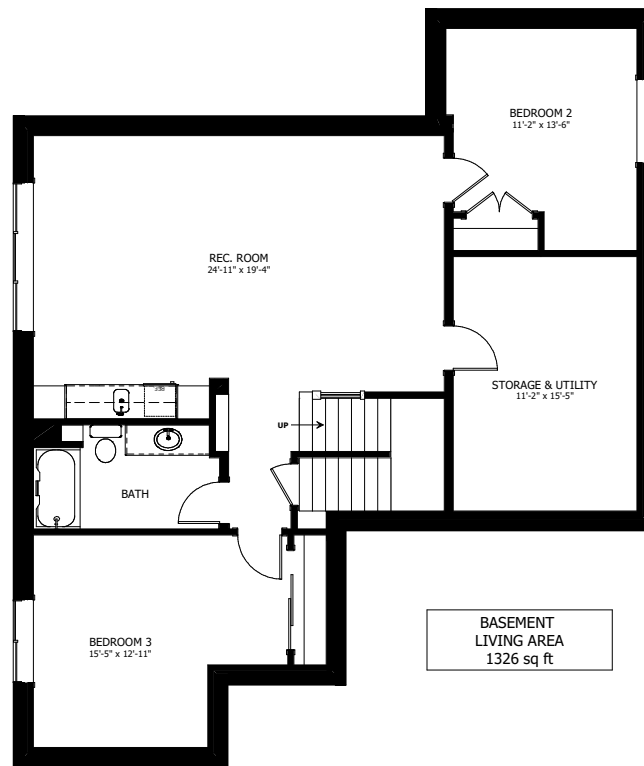
CALL US TODAY: 250-489-1519
WWW.NEWDAWNDEVELOPMENTS.COM

FLOOR PLAN HIGHLIGHTS:

- 9' LONG KITCHEN ISLAND & LARGE PANTRY
- VAULTED CEILINGS IN LIVING, DINING, KITCHEN, ENTRY & MASTER BEDROOM
- MODERN EXTERIOR

OPTIONAL UPGRADES:

- DEVELOPED GROUND LEVEL WITH LARGE REC ROOM, 2 ADDITIONAL BEDROOMS & BATH
- FULL REAR DECK
- SECOND SINK IN ENSUITE
- WALKOUT BASEMENT



NEW DAWN
DEVELOPMENTS

PLANS AND ELEVATIONS ARE APPROXIMATE AND DISPLAY NON-STANDARD FEATURES. ELEVATIONS MAY VARY BY COMMUNITY & THE BUILDER RESERVES THE RIGHT TO MAKE MODIFICATIONS WITHOUT NOTICE. ALL FLOOR PLANS AND ELEVATIONS ARE THE EXCLUSIVE PROPERTY OF NEW DAWN DEVELOPMENTS. ALL RIGHTS RESERVED, INCLUDING THE RIGHT OF REPRODUCTION, IN PART OR IN WHOLE. LAST UPDATED, MAY 2021