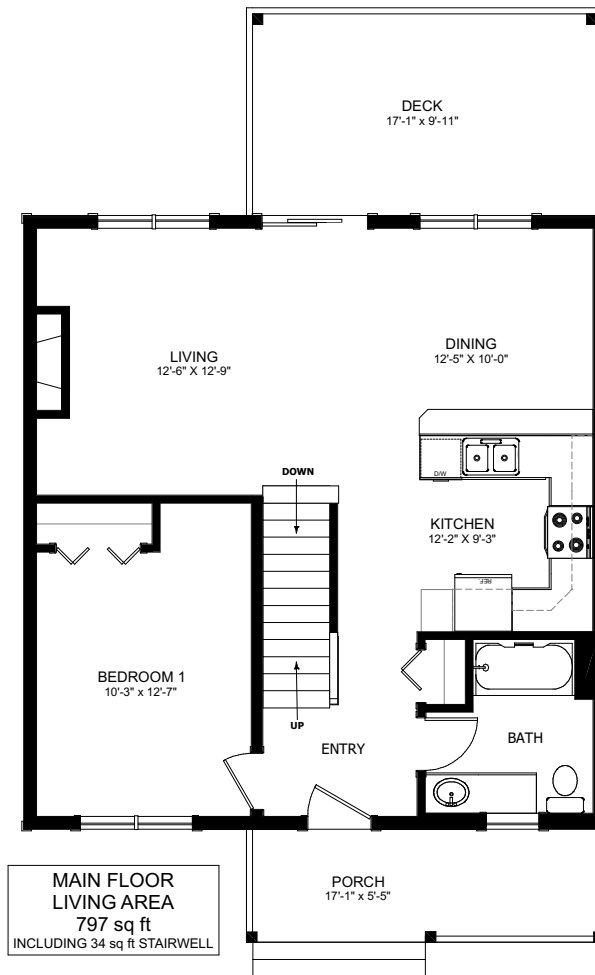




# THE LAUREL

1190 SQ FT  
TWO STOREY

2 + 1 BED  
2.5 BATH  
22'-0" X 33'-6"



NEW DAWN  
DEVELOPMENTS

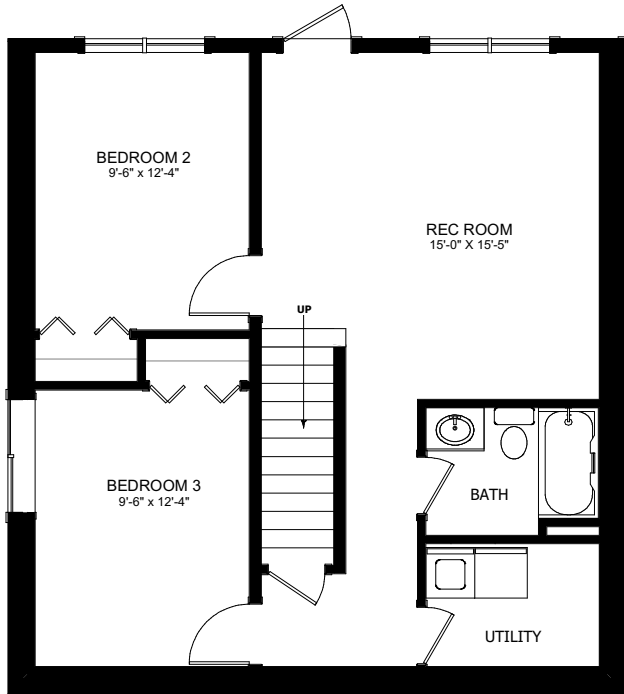
CALL US TODAY: 250-489-1519  
[WWW.NEWDAWNDEVELOPMENTS.COM](http://WWW.NEWDAWNDEVELOPMENTS.COM)

## FLOOR PLAN HIGHLIGHTS:

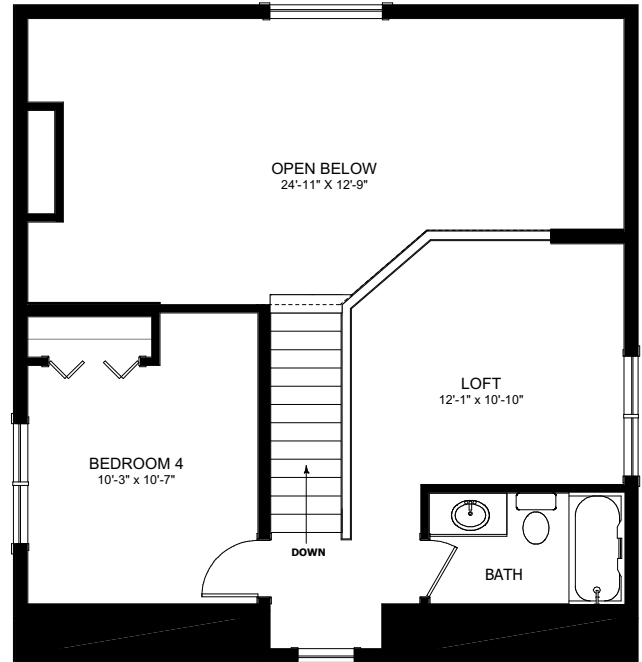
- ISLAND WITH EATING BAR
- REAR DECK
- LARGE FRONT PORCH
- VAULTED CEILING IN KITCHEN & LIVING ROOM
- LARGE WINDOWS

## OPTIONAL UPGRADES:

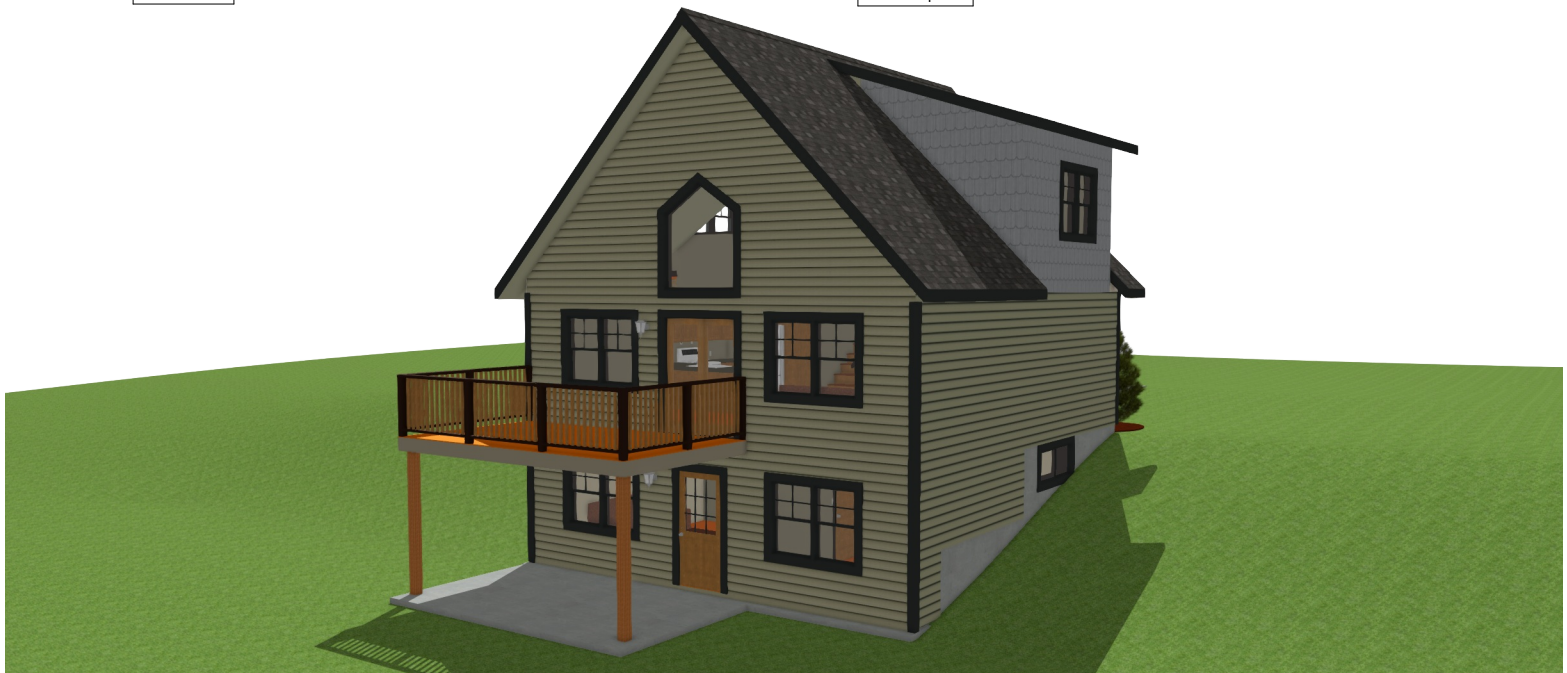
- DEVELOPED BASEMENT WITH TWO ADDITIONAL BEDROOMS, REC, BATH & WALKOUT
- LOFT BEDROOM UPSTAIRS
- GAS FIXTURE ON REAR DECK FOR BBQ
- WET BAR IN BASEMENT



BASEMENT  
LIVING AREA  
797 sq ft



UPPER FLOOR  
LIVING AREA  
394 sq ft



**NEW DAWN**  
DEVELOPMENTS

PLANS AND ELEVATIONS ARE APPROXIMATE AND DISPLAY NON-STANDARD FEATURES. ELEVATIONS MAY VARY BY COMMUNITY & THE BUILDER RESERVES THE RIGHT TO MAKE MODIFICATIONS WITHOUT NOTICE. ALL FLOOR PLANS AND ELEVATIONS ARE THE EXCLUSIVE PROPERTY OF NEW DAWN DEVELOPMENTS. ALL RIGHTS RESERVED, INCLUDING THE RIGHT OF REPRODUCTION, IN PART OR IN WHOLE. LAST UPDATED, MAY 2021