



THE SAGE

583 SQ. FT.
BUNGALOW

1 BED
1.5 BATH
27'-8" X 25'-2"



MAIN FLOOR
LIVING AREA
583 sq ft
INCLUDING 66 sq ft STAIRWELL



NEW DAWN
DEVELOPMENTS

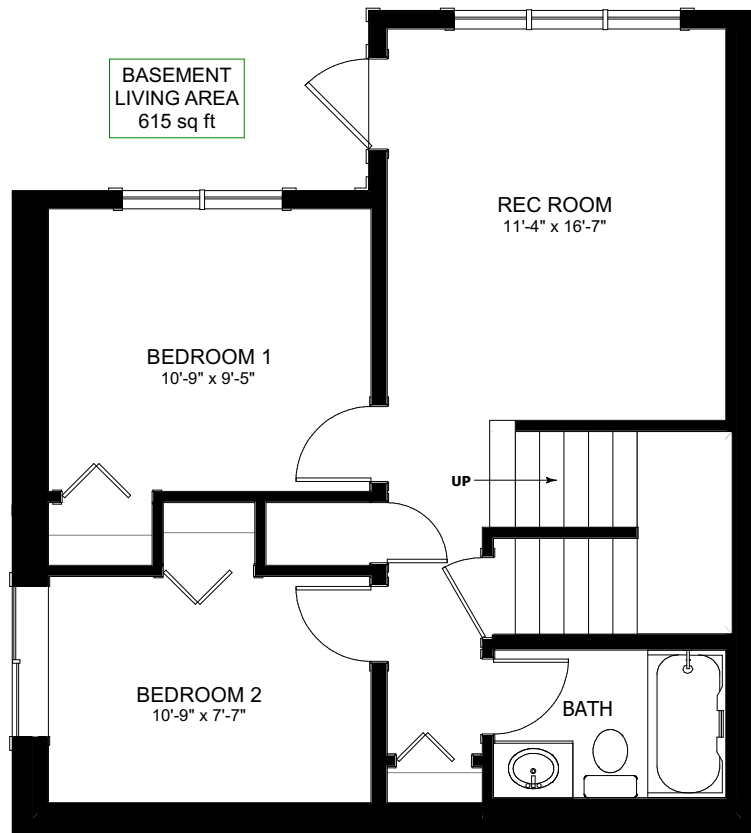
CALL US TODAY: 250-489-1519
WWW.NEWDAWNDEVELOPMENTS.COM

FLOOR PLAN HIGHLIGHTS:

- ISLAND WITH EATING BAR
- REAR DECK
- LARGE FRONT PORCH
- VAULTED CEILING IN KITCHEN & LIVING ROOM
- LARGE WINDOWS

OPTIONAL UPGRADES:

- DEVELOPED BASEMENT WITH 2 ADDITIONAL BEDROOMS, BATH, & REC ROOM
- WALKOUT BASEMENT
- GAS FIXTURE ON DECK FOR BBQ
- FIREPLACE IN LIVING ROOM



NEW DAWN
DEVELOPMENTS

PLANS AND ELEVATIONS ARE APPROXIMATE AND DISPLAY NON-STANDARD FEATURES. ELEVATIONS MAY VARY BY COMMUNITY & THE BUILDER RESERVES THE RIGHT TO MAKE MODIFICATIONS WITHOUT NOTICE. ALL FLOOR PLANS AND ELEVATIONS ARE THE EXCLUSIVE PROPERTY OF NEW DAWN DEVELOPMENTS. ALL RIGHTS RESERVED, INCLUDING THE RIGHT OF REPRODUCTION, IN PART OR IN WHOLE. LAST UPDATED, MAY 2021