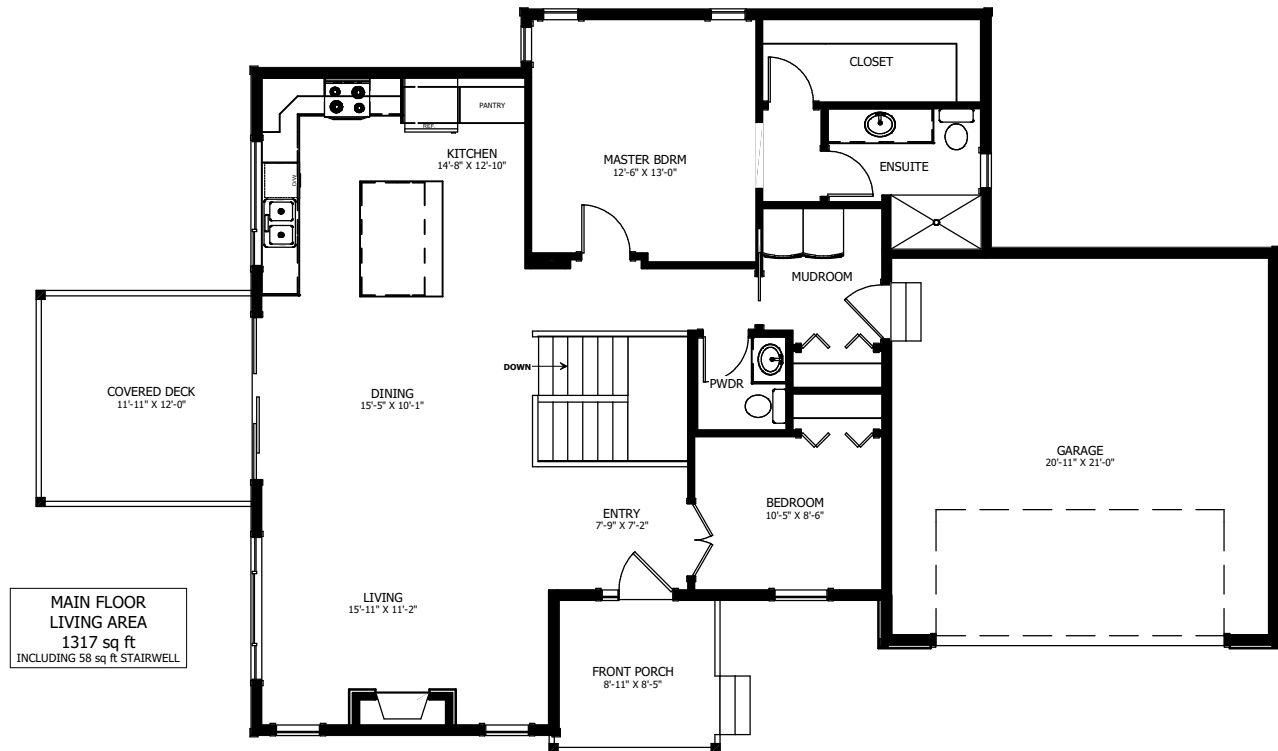


THE PURCELL



2 BED - 1.5 BATH

40'-3" x 57'-0"



NEW DAWN
DEVELOPMENTS

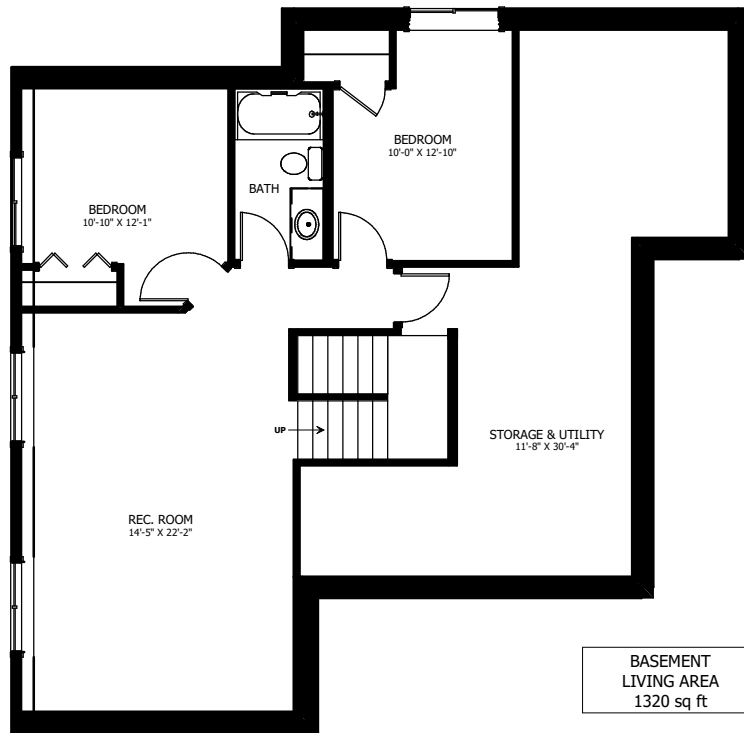
CALL US TODAY: 250-489-1519
WWW.NEWDAWNDEVELOPMENTS.COM

FLOOR PLAN HIGHLIGHTS:

- OVERSIZED 'L' SHAPE KITCHEN
- 3 PANEL SLIDING PATIO DOOR
- STAIRWELL ART NICHE
- DOUBLE DOORS TO SECOND BEDROOM
- MAIN FLOOR LAUNDRY

OPTIONAL UPGRADES:

- DEVELOPED BASEMENT WITH REC. ROOM, 2 BEDROOMS, & BATH
- EXTEND SIDE DECK
- OPTIONAL GAS FIREPLACE IN LIVING ROOM



BASEMENT
LIVING AREA
1320 sq ft



NEW DAWN
DEVELOPMENTS

PLANS AND ELEVATIONS ARE APPROXIMATE AND DISPLAY NON-STANDARD FEATURES. ELEVATIONS MAY VARY BY COMMUNITY & THE BUILDER RESERVES THE RIGHT TO MAKE MODIFICATIONS WITHOUT NOTICE. ALL FLOOR PLANS AND ELEVATIONS ARE THE EXCLUSIVE PROPERTY OF NEW DAWN DEVELOPMENTS. ALL RIGHTS RESERVED, INCLUDING THE RIGHT OF REPRODUCTION, IN PART OR IN WHOLE. LAST UPDATED MAY, 2021.