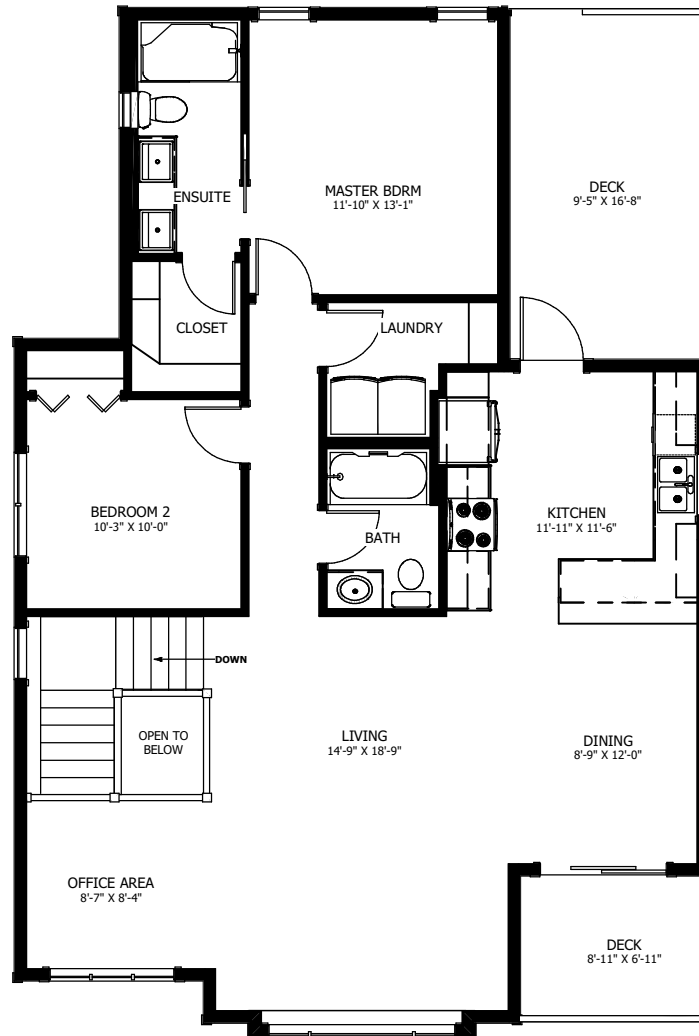




THE PYRAMID

2 BED - 2 BATH

33'-0" X 48'-3"



UPPER FLOOR
LIVING AREA
1273 sq ft
INCLUDING 75 sq ft STAIRWELL



NEW DAWN
DEVELOPMENTS

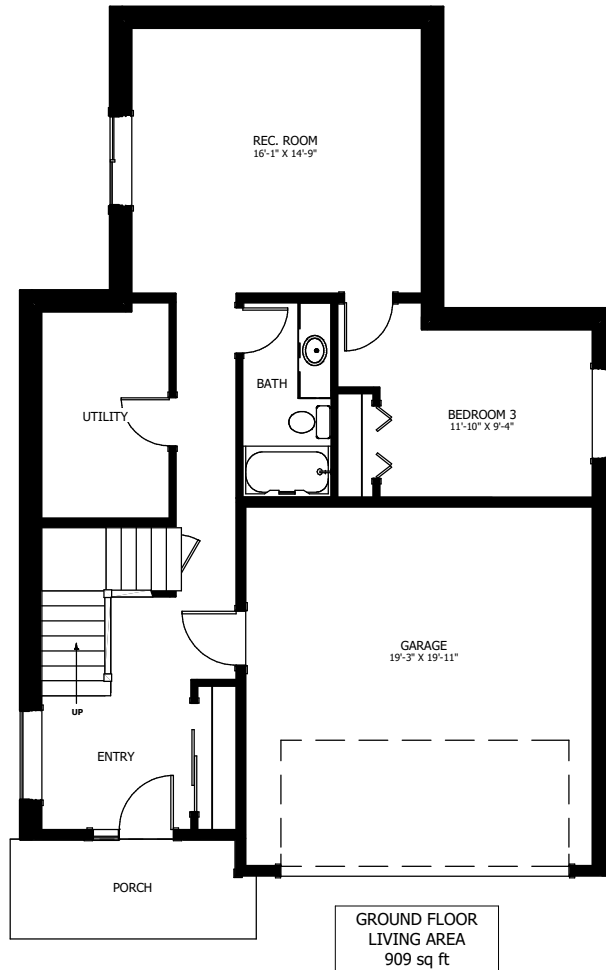
CALL US TODAY: 250-489-1519
WWW.NEWDAWNDEVELOPMENTS.COM

FLOOR PLAN HIGHLIGHTS:

- VAULTED CEILING IN LIVING ROOM
- OPEN FRONT DECK
- MAIN FLOOR OFFICE AREA
- PENINSULA WITH EATING BAR
- MAIN FLOOR LAUNDRY

OPTIONAL UPGRADES:

- SECOND SINK IN ENSUITE
- COVERED REAR DECK
- GAS FIREPLACE IN LIVING ROOM
- ENCLOSED POCKET OFFICE
- RAILING AROUND STAIRWELL



**NEW DAWN
DEVELOPMENTS**

PLANS AND ELEVATIONS ARE APPROXIMATE AND DISPLAY NON-STANDARD FEATURES. ELEVATIONS MAY VARY BY COMMUNITY & THE BUILDER RESERVES THE RIGHT TO MAKE MODIFICATIONS WITHOUT NOTICE. ALL FLOOR PLANS AND ELEVATIONS ARE THE EXCLUSIVE PROPERTY OF NEW DAWN DEVELOPMENTS. ALL RIGHTS RESERVED, INCLUDING THE RIGHT OF REPRODUCTION, IN PART OR IN WHOLE. LAST UPDATED MAY 2021