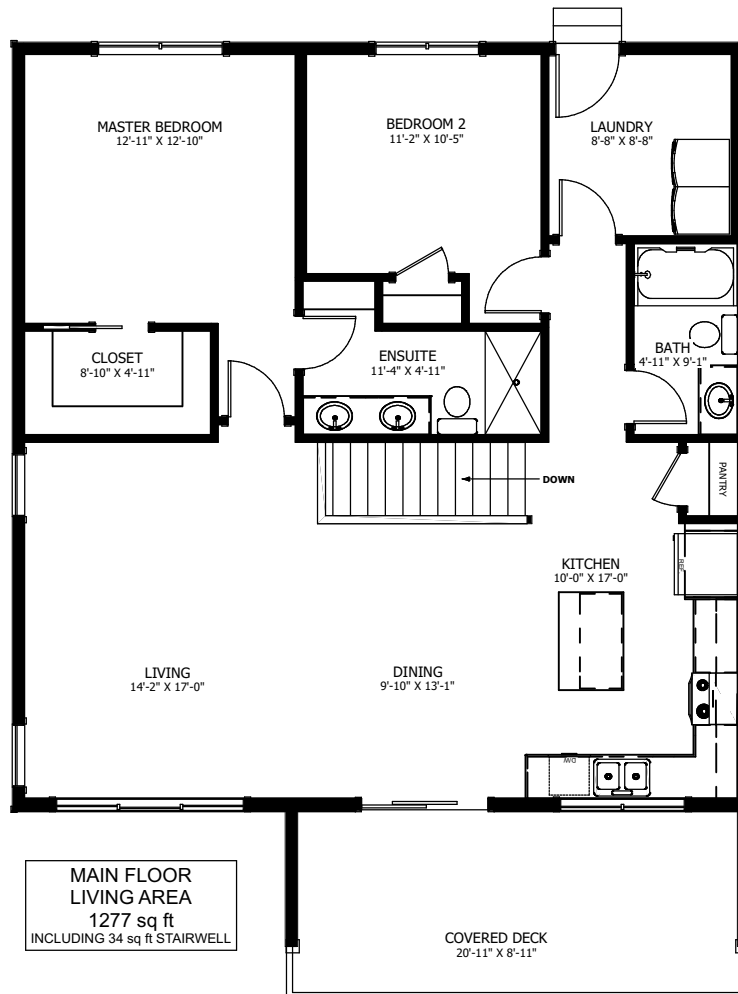




# THE STEEPLES II

2 BED - 2 BATH

35'-0" X 45'-6"



**NEW DAWN**  
DEVELOPMENTS

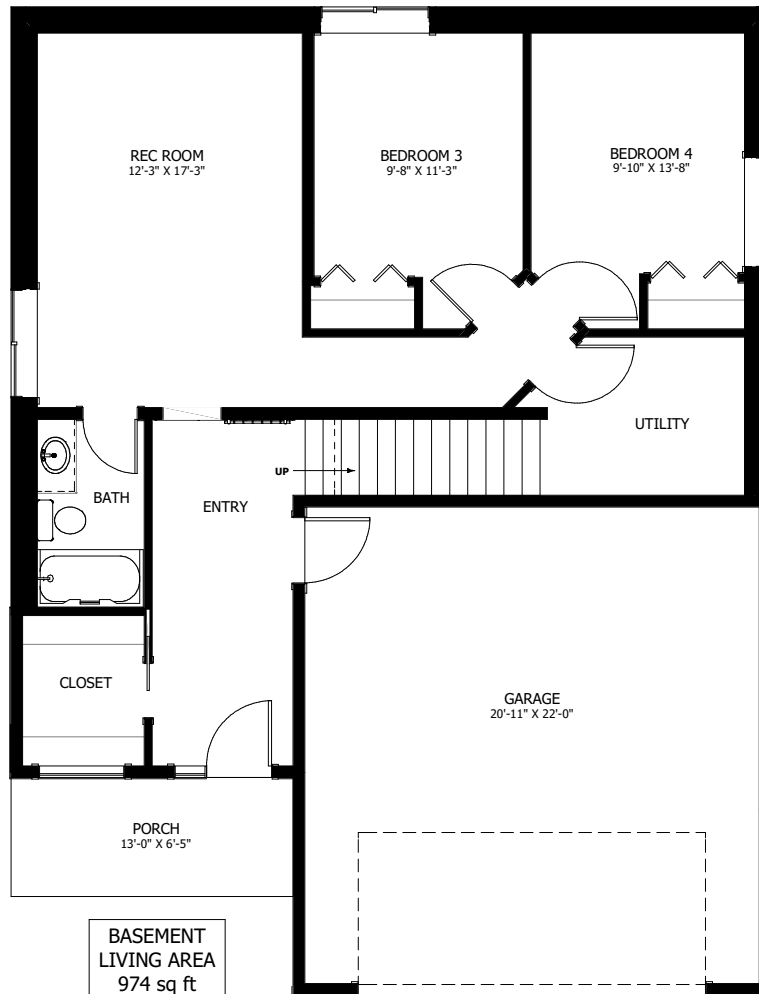
CALL US TODAY: 250-489-1519  
[WWW.NEWDAWNDEVELOPMENTS.COM](http://WWW.NEWDAWNDEVELOPMENTS.COM)

### FLOOR PLAN HIGHLIGHTS:

- VAULTED CEILING IN GREAT ROOM
- COVERED FRONT DECK
- SPACIOUS ENTRY WITH WALK-IN CLOSET
- ISLAND WITH EATING BAR
- LARGE MASTER ENSUITE & CLOSET
- MAIN FLOOR LAUNDRY

### OPTIONAL UPGRADES:

- DEVELOPED ENTRY LEVEL WITH REC ROOM, 2 BEDROOMS, & FULL BATH
- RADIANT SLAB HEAT IN ENTRY LEVEL
- GAS FIREPLACE IN LIVING ROOM
- RAILING AROUND STAIRWELL
- SECOND SINK IN ENSUITE



NEW DAWN  
DEVELOPMENTS

PLANS AND ELEVATIONS ARE APPROXIMATE AND DISPLAY NON-STANDARD FEATURES.  
ELEVATIONS MAY VARY BY COMMUNITY & THE BUILDER RESERVES THE RIGHT TO  
MAKE MODIFICATIONS WITHOUT NOTICE. ALL FLOOR PLANS AND ELEVATIONS ARE  
THE EXCLUSIVE PROPERTY OF NEW DAWN DEVELOPMENTS. ALL RIGHTS RESERVED,  
INCLUDING THE RIGHT OF REPRODUCTION, IN PART OR IN WHOLE.  
LAST UPDATED MAY 2021