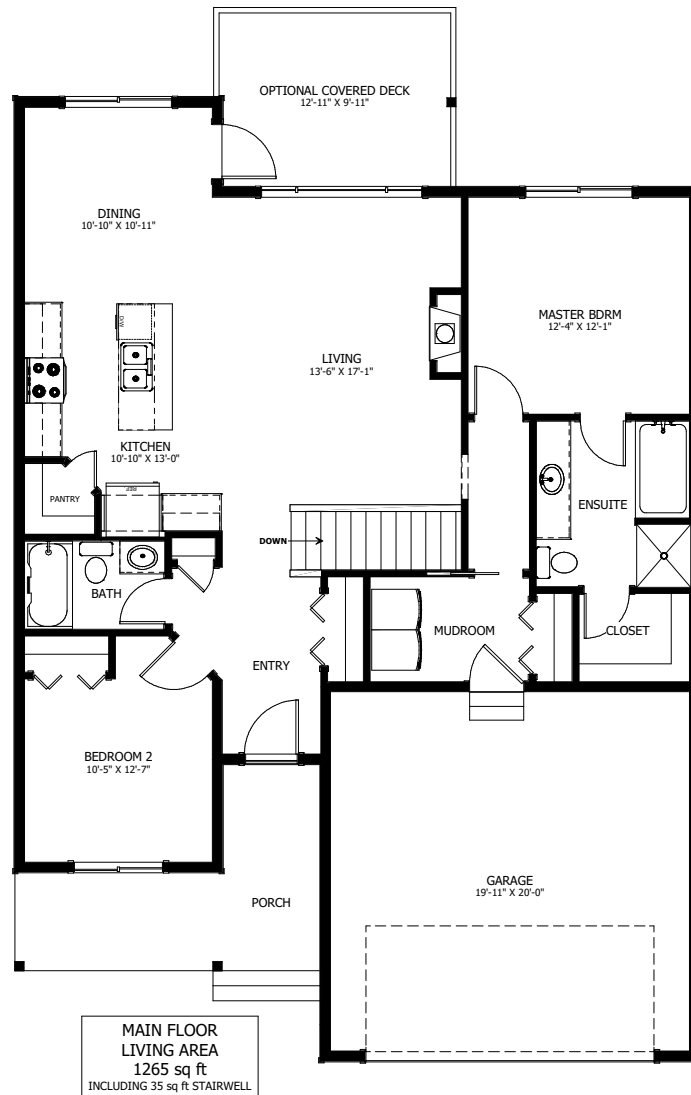


# THE TEEPEE



2 BED - 2 BATH

38'-0" X 53'-6"



NEW DAWN  
DEVELOPMENTS

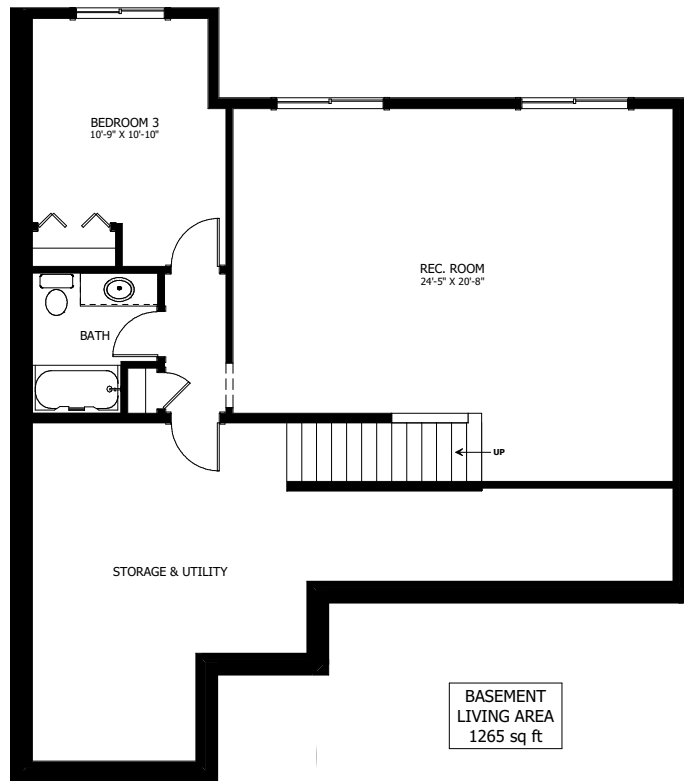
CALL US TODAY: 250-489-1519  
[WWW.NEWDAWNDEVELOPMENTS.COM](http://WWW.NEWDAWNDEVELOPMENTS.COM)

### FLOOR PLAN HIGHLIGHTS:

- VAULTED CEILING IN ENTRY, STAIRWELL, & LIVING ROOM
- SOAKER TUB IN ENSUITE
- LARGE 'L' SHAPED KITCHEN WITH CORNER PANTRY
- MAIN FLOOR LAUNDRY

### OPTIONAL UPGRADES:

- DEVELOPED BASEMENT WITH REC. ROOM, BEDROOM, & BATH
- GAS FIREPLACE IN LIVING ROOM
- SECOND SINK IN ENSUITE
- COVERED REAR DECK
- LOWER LEVEL WALKOUT



**NEW DAWN**  
DEVELOPMENTS

PLANS AND ELEVATIONS ARE APPROXIMATE AND DISPLAY NON-STANDARD FEATURES. ELEVATIONS MAY VARY BY COMMUNITY & THE BUILDER RESERVES THE RIGHT TO MAKE MODIFICATIONS WITHOUT NOTICE. ALL FLOOR PLANS AND ELEVATIONS ARE THE EXCLUSIVE PROPERTY OF NEW DAWN DEVELOPMENTS. ALL RIGHTS RESERVED, INCLUDING THE RIGHT OF REPRODUCTION, IN PART OR IN WHOLE. LAST UPDATED MAY, 2021.