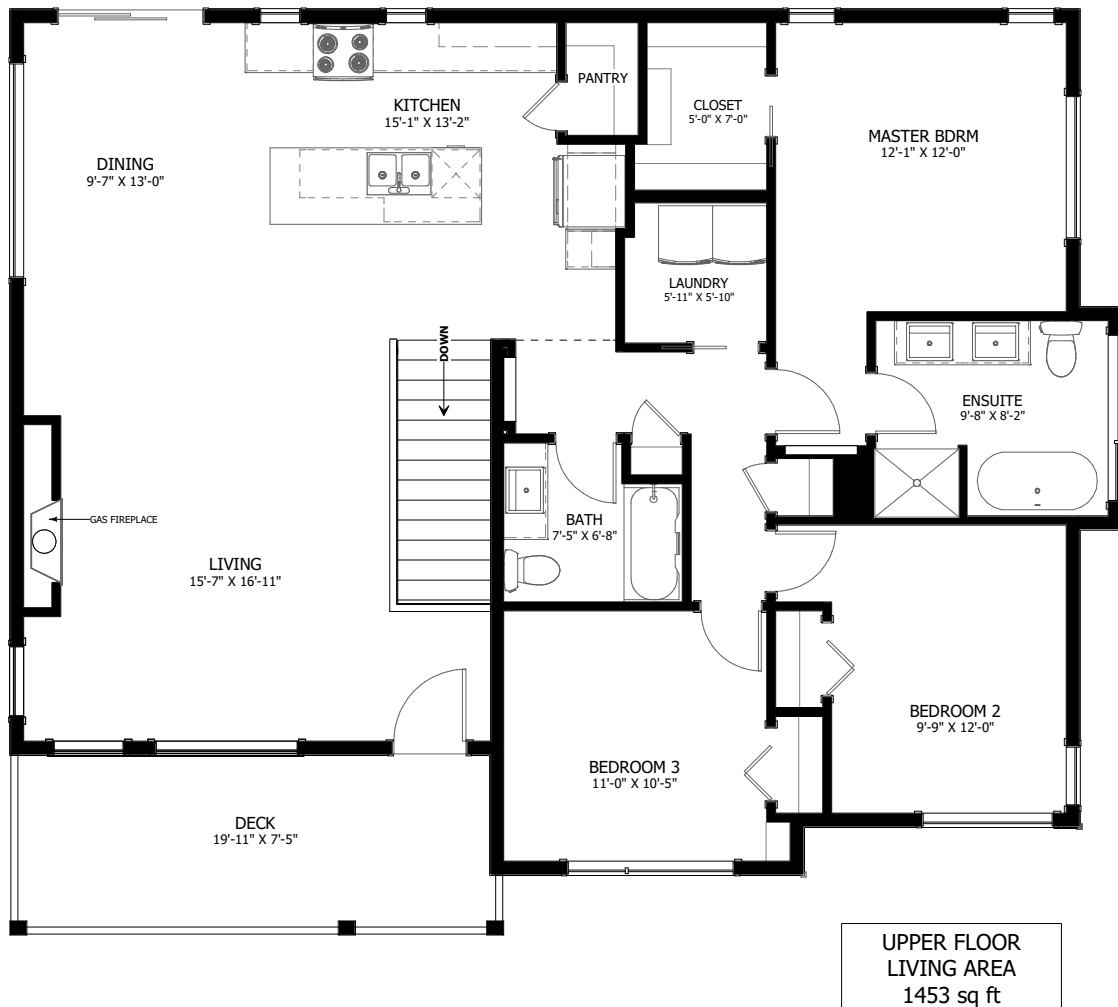




# THE TIMBER

1785 SQ FT  
+ 659 SQ FT SUITE  
GRADE ENTRY

3 BED + 1 BED SUITE  
2 BATH + 1 SUITE BATH  
44'-6" X 38'-6"



NEW DAWN  
DEVELOPMENTS

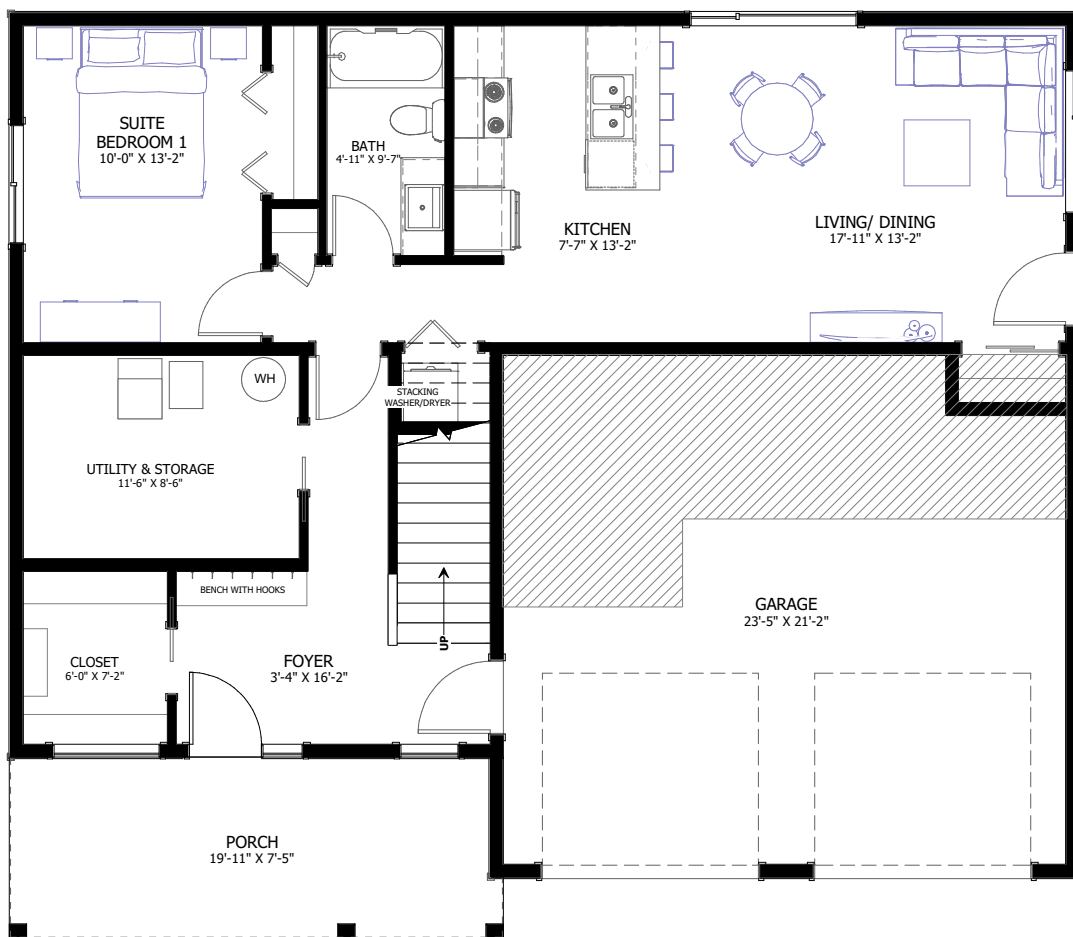
CALL US TODAY: 250-489-1519  
[WWW.NEWDAWNDEVELOPMENTS.COM](http://WWW.NEWDAWNDEVELOPMENTS.COM)

### FLOOR PLAN HIGHLIGHTS:

- MODERN ROOFLINE WITH VAULTED CEILING IN LIVING, DINING & KITCHEN
- LIVING ROOM WINDOW WALL
- FRONT DECK WITH MODERN RAILING
- WALK-IN PANTRY
- 1 BEDROOM BASEMENT SUITE

### OPTIONAL UPGRADES:

- REPLACE SUITE WITH REC ROOM, 1 BED & 1 BATH
- REVISE SUITE TO 2 BEDROOM LAYOUT
- VAULTED CEILING ON ENTIRE UPPER FLOOR
- ADD DECK OFF OF DINING ROOM



LOWER FLOOR  
LIVING AREA  
991 sq ft  
INCLUDING 659 sq ft SUITE



NEW DAWN  
DEVELOPMENTS

PLANS AND ELEVATIONS ARE APPROXIMATE AND DISPLAY NON-STANDARD FEATURES.  
ELEVATIONS MAY VARY BY COMMUNITY & THE BUILDER RESERVES THE RIGHT TO  
MAKE MODIFICATIONS WITHOUT NOTICE. ALL FLOOR PLANS AND ELEVATIONS ARE  
THE EXCLUSIVE PROPERTY OF NEW DAWN DEVELOPMENTS. ALL RIGHTS RESERVED.  
INCLUDING THE RIGHT OF REPRODUCTION, IN PART OR IN WHOLE.  
LAST UPDATED: MAY 2018