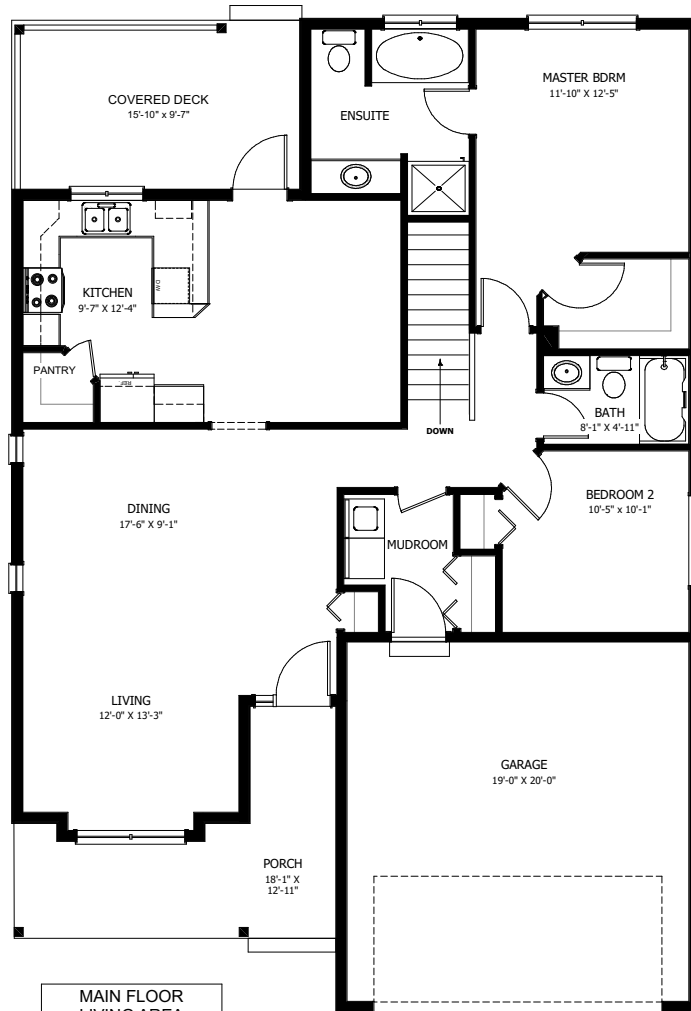


THE GELN CASSIE



2 BED - 2 BATH

44'-6" X 34'-0"



MAIN FLOOR
LIVING AREA
1279 sq ft
INCLUDING 37 sq ft STAIRWELL



NEW DAWN
DEVELOPMENTS

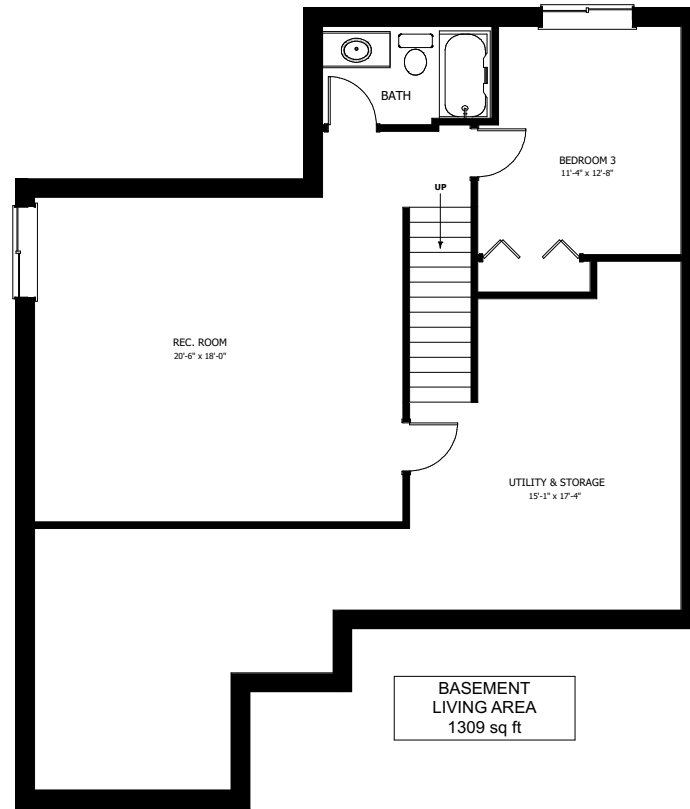
CALL US TODAY: 250-489-1519
WWW.NEWDAWNDEVELOPMENTS.COM

FLOOR PLAN HIGHLIGHTS:

- LARGE FRONT LIVING ROOM
- 'L' SHAPED KITCHEN
- 4PC ENSUITE
- CENTRAL OFFICE NOOK
- MAIN FLOOR LAUNDRY
- REAR COVERED DECK

OPTIONAL UPGRADES:

- DEVELOPED BASEMENT WITH
ADDITIONAL BEDROOM & BATH
- CANTILEVERED FIREPLACE
- 2ND SINK IN ENSUITE
- 9' HIGH BASEMENT CEILING
- LOWER LEVEL WALKOUT



NEW DAWN
DEVELOPMENTS

PLANS AND ELEVATIONS ARE APPROXIMATE AND DISPLAY NON-STANDARD FEATURES. ELEVATIONS MAY VARY BY COMMUNITY & THE BUILDER RESERVES THE RIGHT TO MAKE MODIFICATIONS WITHOUT NOTICE. ALL FLOOR PLANS AND ELEVATIONS ARE THE EXCLUSIVE PROPERTY OF NEW DAWN DEVELOPMENTS. ALL RIGHTS RESERVED, INCLUDING THE RIGHT OF REPRODUCTION, IN PART OR IN WHOLE. LAST UPDATED, MAY 2021