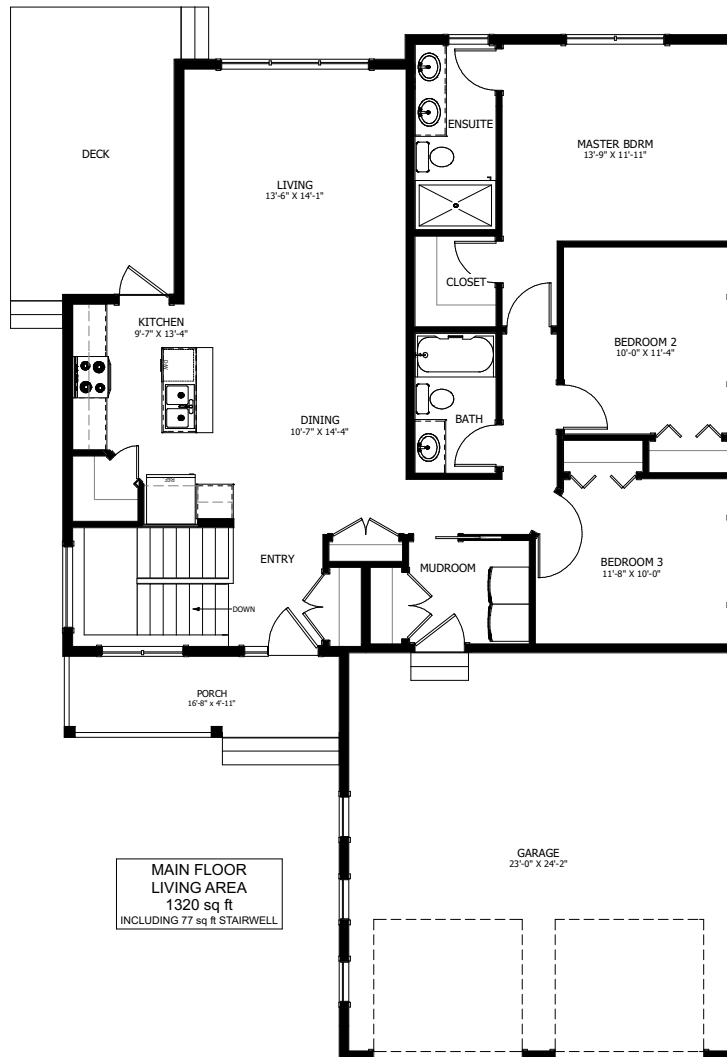


# THE LYTHAM



3 BED - 2 BATH

40'-9" X 62'-0"



MAIN FLOOR  
LIVING AREA  
1320 sq ft  
INCLUDING 77 sq ft STAIRWELL



NEW DAWN  
DEVELOPMENTS

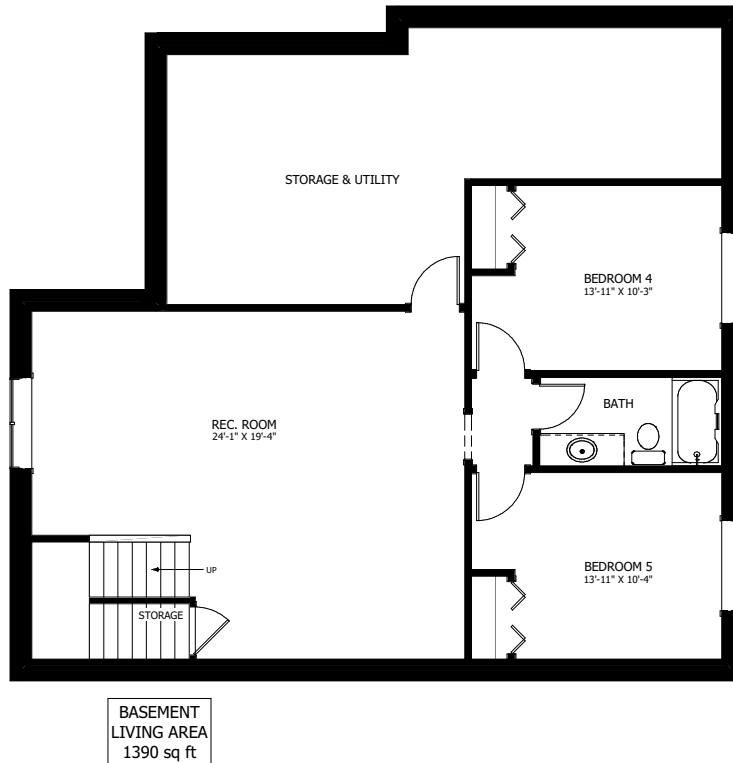
CALL US TODAY: 250-489-1519  
[WWW.NEWDAWNDEVELOPMENTS.COM](http://WWW.NEWDAWNDEVELOPMENTS.COM)

## FLOOR PLAN HIGHLIGHTS:

- OVERSIZED GARAGE
- COVERED REAR DECK
- CORNER PANTRY
- MAIN FLOOR LAUNDRY
- BRIGHT STAIRWELL
- EXTENSIVE BASEMENT STORAGE

## OPTIONAL UPGRADES:

- DEVELOPED BASEMENT WITH 2 BEDROOMS & 1 BATH
- 2ND SINK IN ENSUITE
- CABINETS & COUNTERTOP IN LAUNDRY ROOM
- FIREPLACE IN LIVING ROOM



NEW DAWN  
DEVELOPMENTS

PLANS AND ELEVATIONS ARE APPROXIMATE AND DISPLAY NON-STANDARD FEATURES. ELEVATIONS MAY VARY BY COMMUNITY & THE BUILDER RESERVES THE RIGHT TO MAKE MODIFICATIONS WITHOUT NOTICE. ALL FLOOR PLANS AND ELEVATIONS ARE THE EXCLUSIVE PROPERTY OF NEW DAWN DEVELOPMENTS. ALL RIGHTS RESERVED, INCLUDING THE RIGHT OF REPRODUCTION, IN PART OR IN WHOLE. LAST UPDATED, MAY 2021