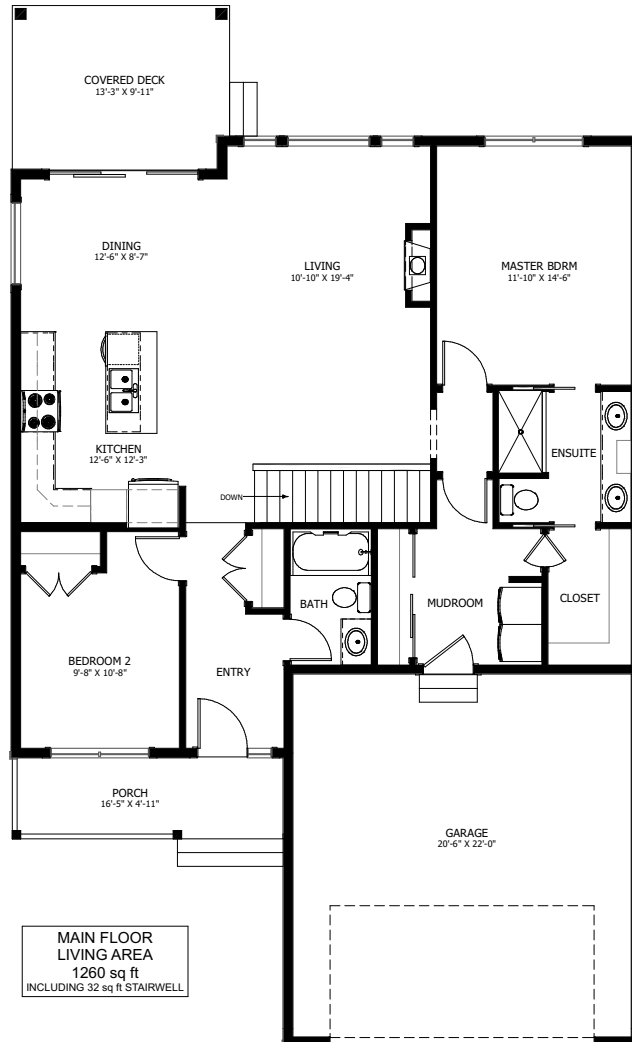


# THE MERION



2 BED - 2 BATH

38'-0" X 55'-0"



NEW DAWN  
DEVELOPMENTS

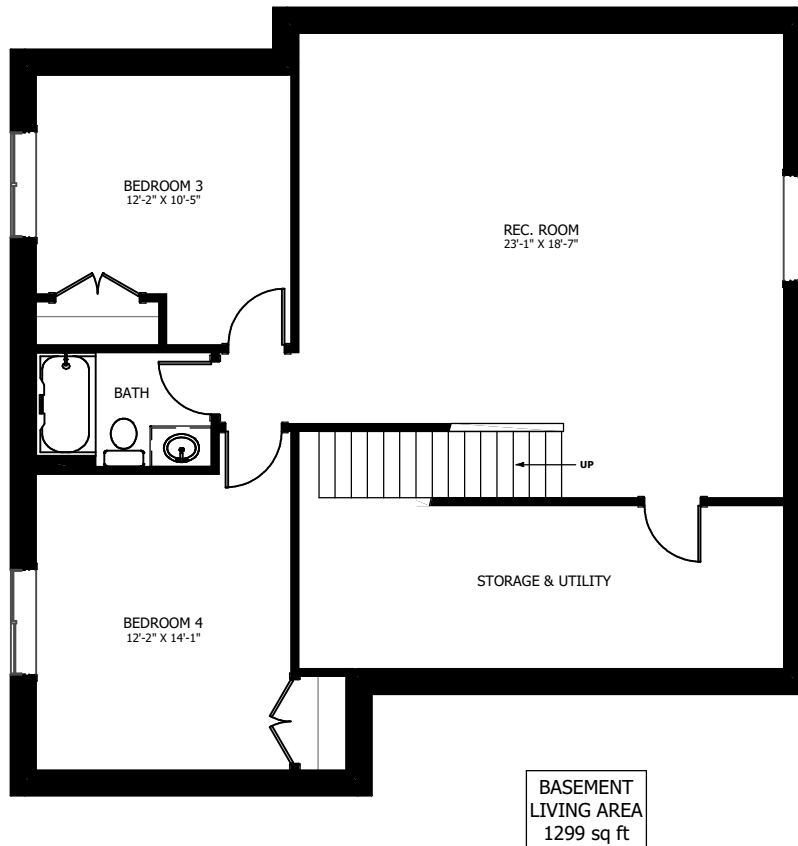
CALL US TODAY: 250-489-1519  
[WWW.NEWDAWNDEVELOPMENTS.COM](http://WWW.NEWDAWNDEVELOPMENTS.COM)

## FLOOR PLAN HIGHLIGHTS:

- OVERSIZED GARAGE
- COVERED REAR DECK
- LARGE MUDROOM
- MAIN FLOOR LAUNDRY
- SPACIOUS REC ROOM
- LARGE "L" SHAPED KITCHEN

## OPTIONAL UPGRADES:

- DEVELOPED BASEMENT WITH 2 BEDROOMS, BATH, & REC
- 2ND SINK IN ENSUITE
- GARAGE MAN DOOR
- FIREPLACE IN LIVING ROOM
- EXTERIOR STONE ACCENTS



NEW DAWN  
DEVELOPMENTS

PLANS AND ELEVATIONS ARE APPROXIMATE AND DISPLAY NON-STANDARD FEATURES.  
ELEVATIONS MAY VARY BY COMMUNITY & THE BUILDER RESERVES THE RIGHT TO  
MAKE MODIFICATIONS WITHOUT NOTICE. ALL FLOOR PLANS AND ELEVATIONS ARE  
THE EXCLUSIVE PROPERTY OF NEW DAWN DEVELOPMENTS. ALL RIGHTS RESERVED.  
INCLUDING THE RIGHT OF REPRODUCTION, IN PART OR IN WHOLE.  
LAST UPDATED, MAY 2021