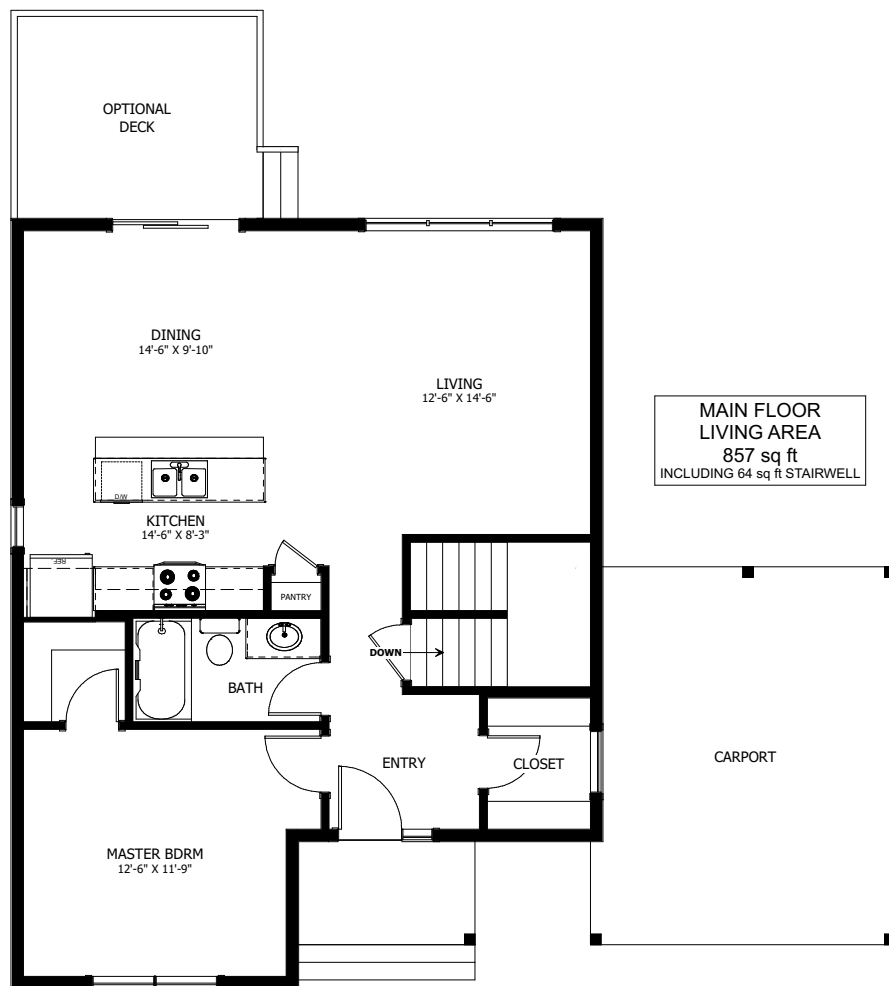


THE WHITE PINE



1 BED - 1 BATH

36'-6" X 42'-0"



NEW DAWN
DEVELOPMENTS

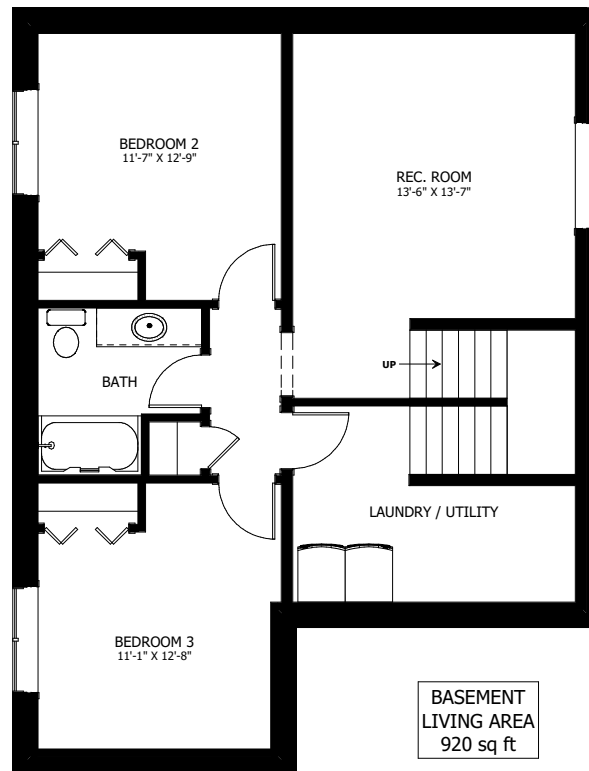
CALL US TODAY: 250-489-1519
WWW.NEWDAWNDEVELOPMENTS.COM

FLOOR PLAN HIGHLIGHTS:

- LARGE REAR WINDOWS
- OVERSIZED CARPORT
- COVERED FRONT PORCH
- WALK-IN FRONT ENTRY CLOSET
- 8' LONG KITCHEN ISLAND WITH EATING BAR

OPTIONAL UPGRADES:

- DEVELOPED BASEMENT WITH 2 BEDROOMS, BATH, & REC. ROOM
- LARGE REAR DECK
- SECOND SINK IN ENSUITE
- VAULTED CEILING IN KITCHEN, DINING, LIVING ROOM



NEW DAWN
DEVELOPMENTS

PLANS AND ELEVATIONS ARE APPROXIMATE AND DISPLAY NON-STANDARD FEATURES. ELEVATIONS MAY VARY BY COMMUNITY & THE BUILDER RESERVES THE RIGHT TO MAKE MODIFICATIONS WITHOUT NOTICE. ALL FLOOR PLANS AND ELEVATIONS ARE THE EXCLUSIVE PROPERTY OF NEW DAWN DEVELOPMENTS. ALL RIGHTS RESERVED, INCLUDING THE RIGHT OF REPRODUCTION, IN PART OR IN WHOLE. LAST UPDATED, MAY 2021