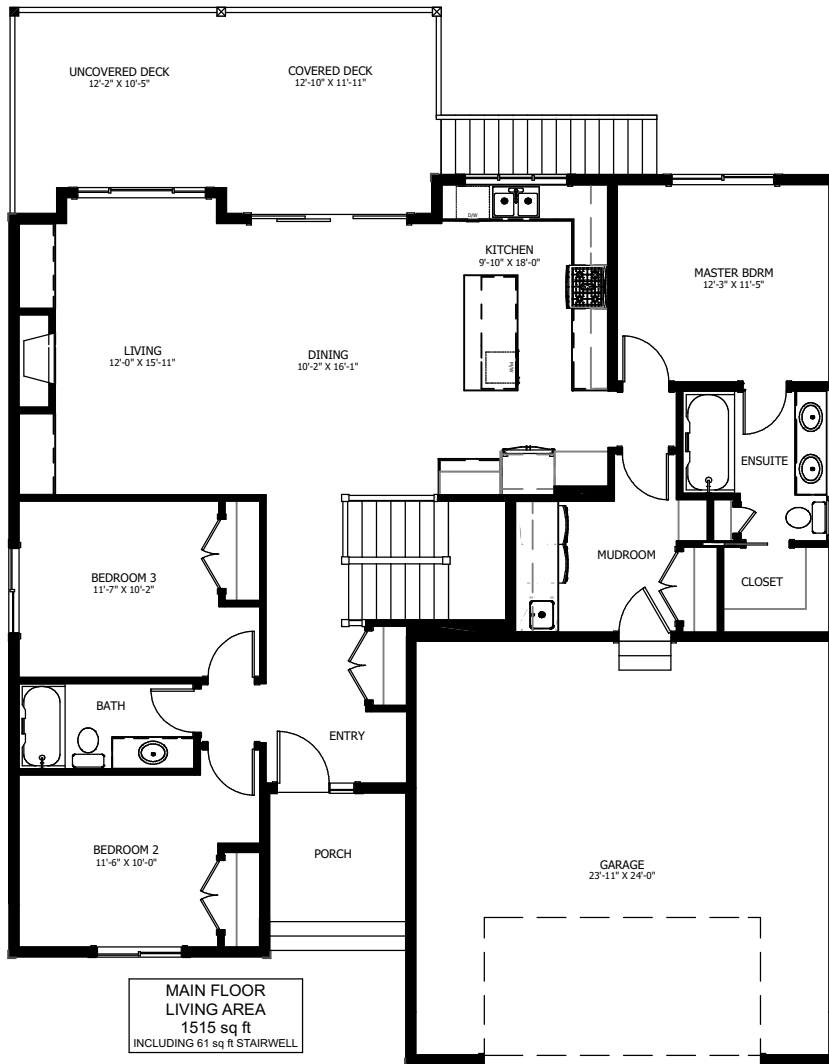


THE PREMIER



3 BED - 2 BATH

51'-6" X 48'-2"



NEW DAWN
DEVELOPMENTS

CALL US TODAY: 250-489-1519
WWW.NEWDAWNDEVELOPMENTS.COM

FLOOR PLAN HIGHLIGHTS:

- OPEN CONCEPT KITCHEN, DINING, & LIVING
- THREE MAIN FLOOR BEDROOMS
- LARGE MUDROOM
- MASTER BEDROOM WITH LARGE ENSUITE & WALK-IN CLOSET

OPTIONAL UPGRADES:

- DEVELOPED BASEMENT WITH TWO BEDROOMS & REC ROOM
- 2ND SINK IN ENSUITE
- BUILT IN BENCH IN LIVING ROOM
- GAS FIREPLACE IN LIVING ROOM
- MAIN FLOOR VAULTED CEILING



NEW DAWN
DEVELOPMENTS

PLANS AND ELEVATIONS ARE APPROXIMATE AND DISPLAY NON-STANDARD FEATURES. ELEVATIONS MAY VARY BY COMMUNITY & THE BUILDER RESERVES THE RIGHT TO MAKE MODIFICATIONS WITHOUT NOTICE. ALL FLOOR PLANS AND ELEVATIONS ARE THE EXCLUSIVE PROPERTY OF NEW DAWN DEVELOPMENTS. ALL RIGHTS RESERVED, INCLUDING THE RIGHT OF REPRODUCTION, IN PART OR IN WHOLE. LAST UPDATED, AUGUST 2021