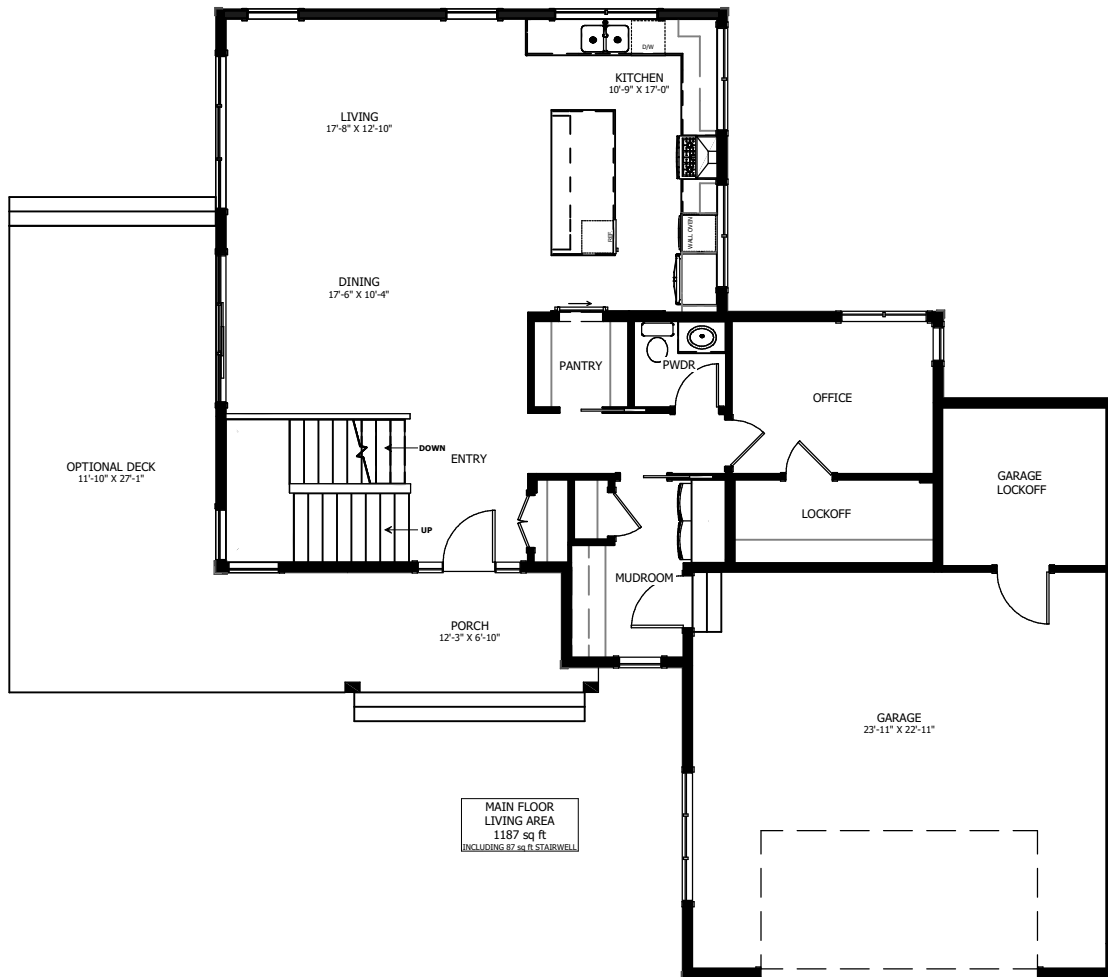


# THE KIAKHO

3 BED - 2.5 BATH

52'-0" x 56'-0"



NEW DAWN  
DEVELOPMENTS

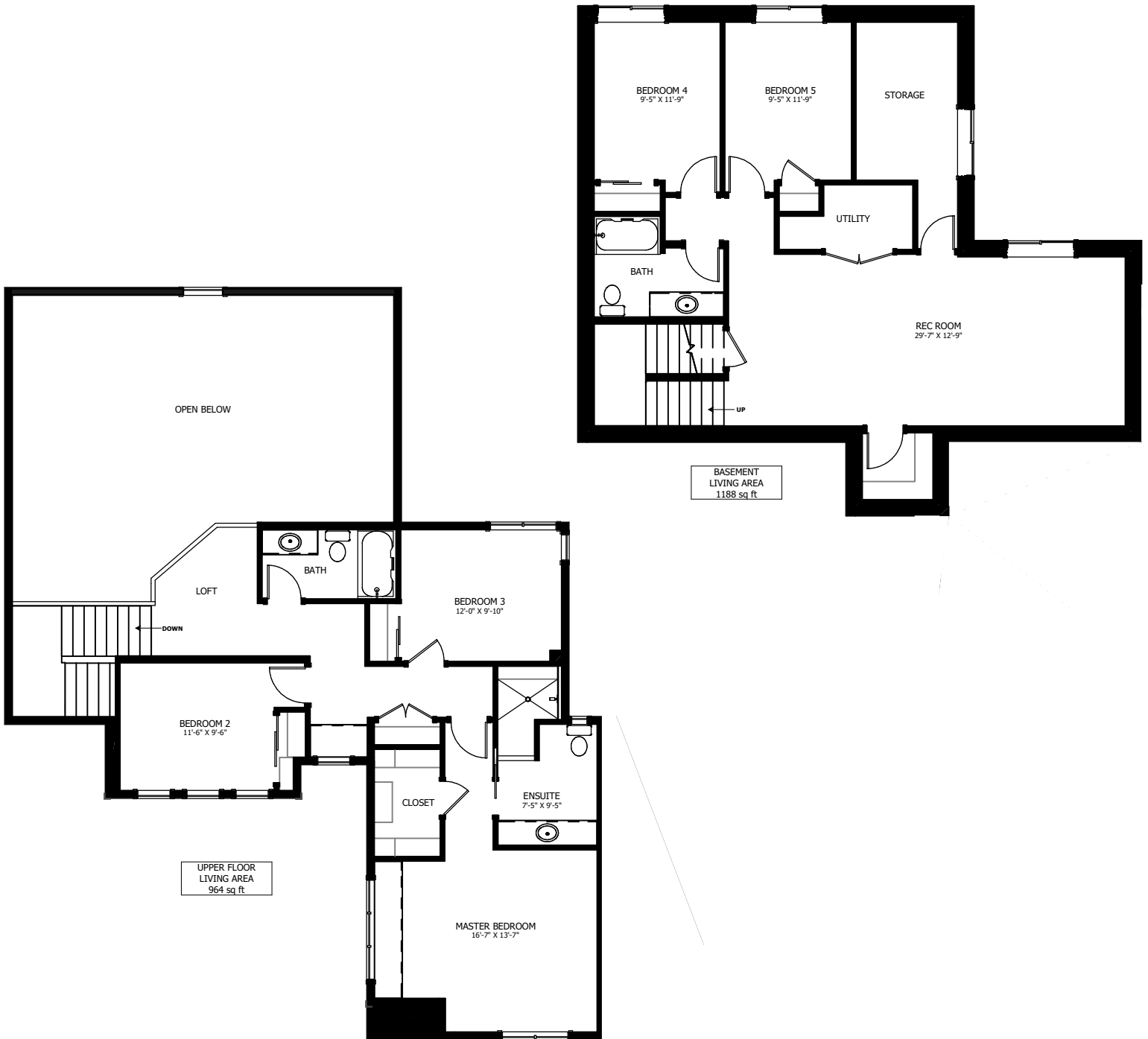
CALL US TODAY: 250-489-1519  
[WWW.NEWDAWNDEVELOPMENTS.COM](http://WWW.NEWDAWNDEVELOPMENTS.COM)

## FLOOR PLAN HIGHLIGHTS:

- OPEN CONCEPT KITCHEN, DINING, & LIVING
- GARAGE LOCKOFF
- MASTER BEDROOM WITH LARGE ENSUITE & WALK-IN CLOSET
- 'L' SHAPED KITCHEN WITH ISLAND

## OPTIONAL UPGRADES:

- DEVELOPED BASEMENT WITH TWO BEDROOMS & REC ROOM
- 2ND SINK IN ENSUITE
- LARGE SIDE DECK
- GAS FIREPLACE IN LIVING ROOM
- MAIN FLOOR VAULTED CEILING



NEW DAWN  
DEVELOPMENTS

PLANS AND ELEVATIONS ARE APPROXIMATE AND DISPLAY NON-STANDARD FEATURES. ELEVATIONS MAY VARY BY COMMUNITY & THE BUILDER RESERVES THE RIGHT TO MAKE MODIFICATIONS WITHOUT NOTICE. ALL FLOOR PLANS AND ELEVATIONS ARE THE EXCLUSIVE PROPERTY OF NEW DAWN DEVELOPMENTS. ALL RIGHTS RESERVED, INCLUDING THE RIGHT OF REPRODUCTION, IN PART OR IN WHOLE. LAST UPDATED, JUNE 2022