

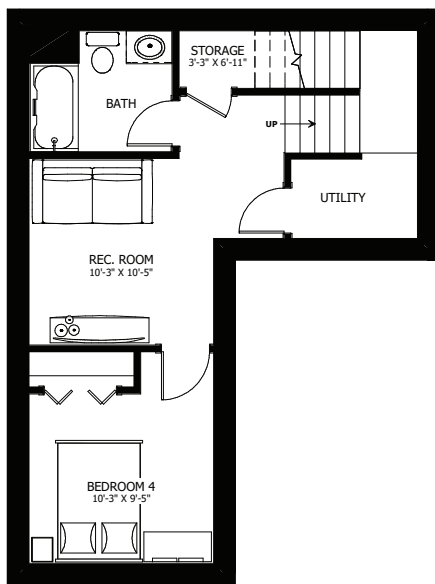


**WESTWOOD  
HEIGHTS**

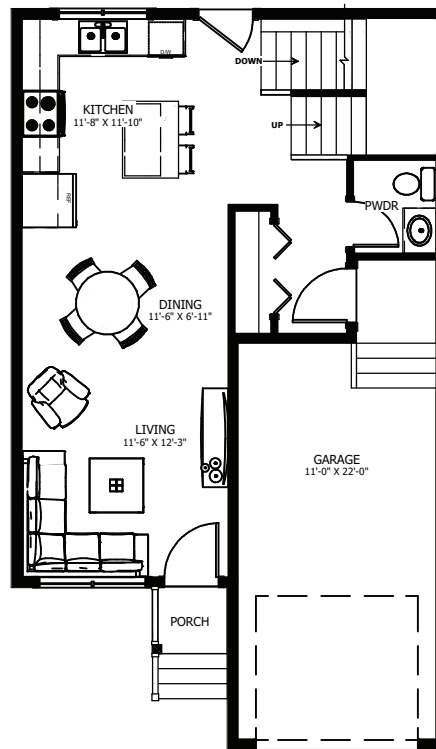
**THE HOSMER**

3+1 BED - 2.5+1 BATH

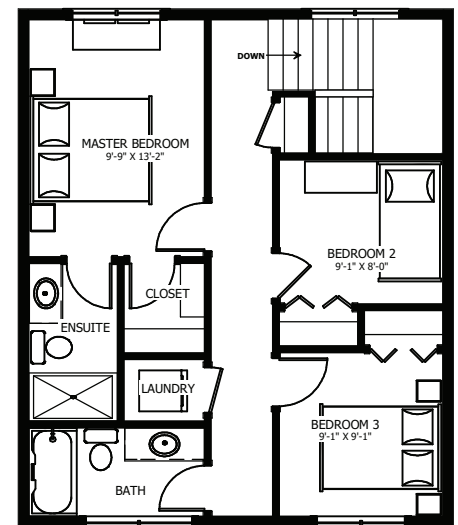
24'-0" X 36'-6"



**LOWER FLOOR PLAN**  
DEVELOPABLE AREA: 435 SQ.FT



**MAIN FLOOR PLAN**  
LIVING AREA: 507 SQ.FT



**UPPER FLOOR PLAN**  
LIVING AREA: 617 SQ.FT



**NEW DAWN  
DEVELOPMENTS**

CALL US TODAY: 250-489-1519  
[WWW.NEWDAWNDEVELOPMENTS.COM](http://WWW.NEWDAWNDEVELOPMENTS.COM)