

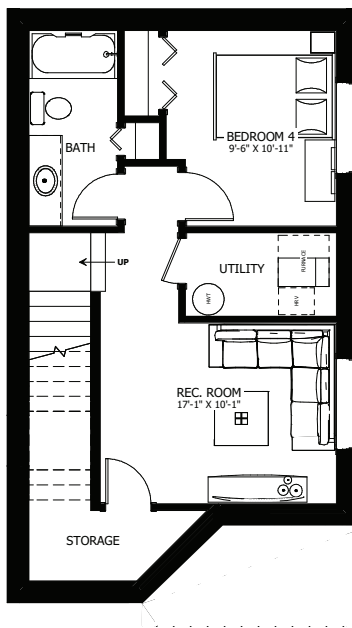


**WESTWOOD
HEIGHTS**

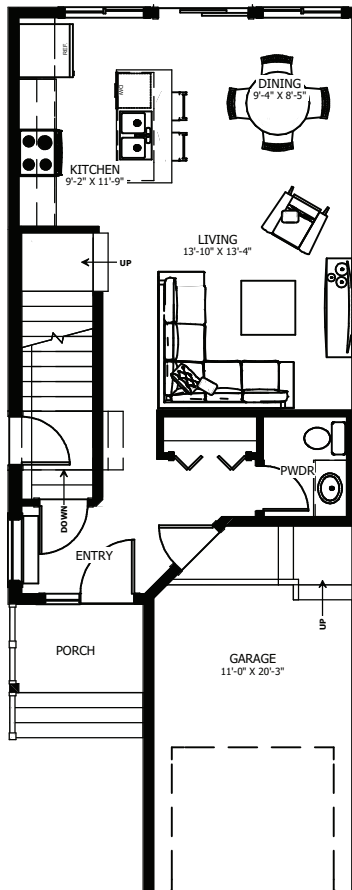
THE TERRION

3+1 BED - 2.5+1 BATH

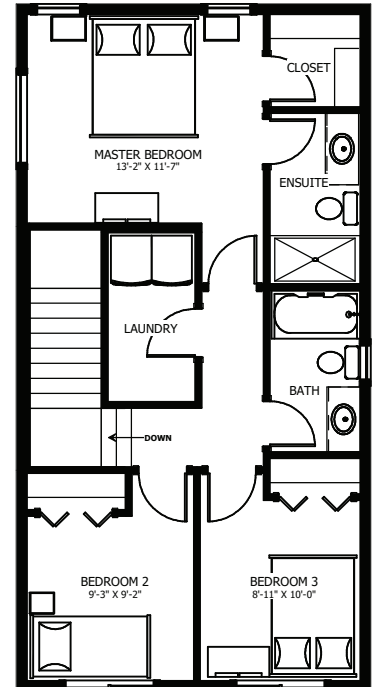
19'-6" X 48'-6"



LOWER FLOOR PLAN
DEVELOPABLE AREA: 473 SQ_FT



MAIN FLOOR PLAN
LIVING AREA: 540 SQ_FT



UPPER FLOOR PLAN
LIVING AREA: 697 SQ_FT



**NEW DAWN
DEVELOPMENTS**

CALL US TODAY: 250-489-1519
WWW.NEWDAWNDEVELOPMENTS.COM