

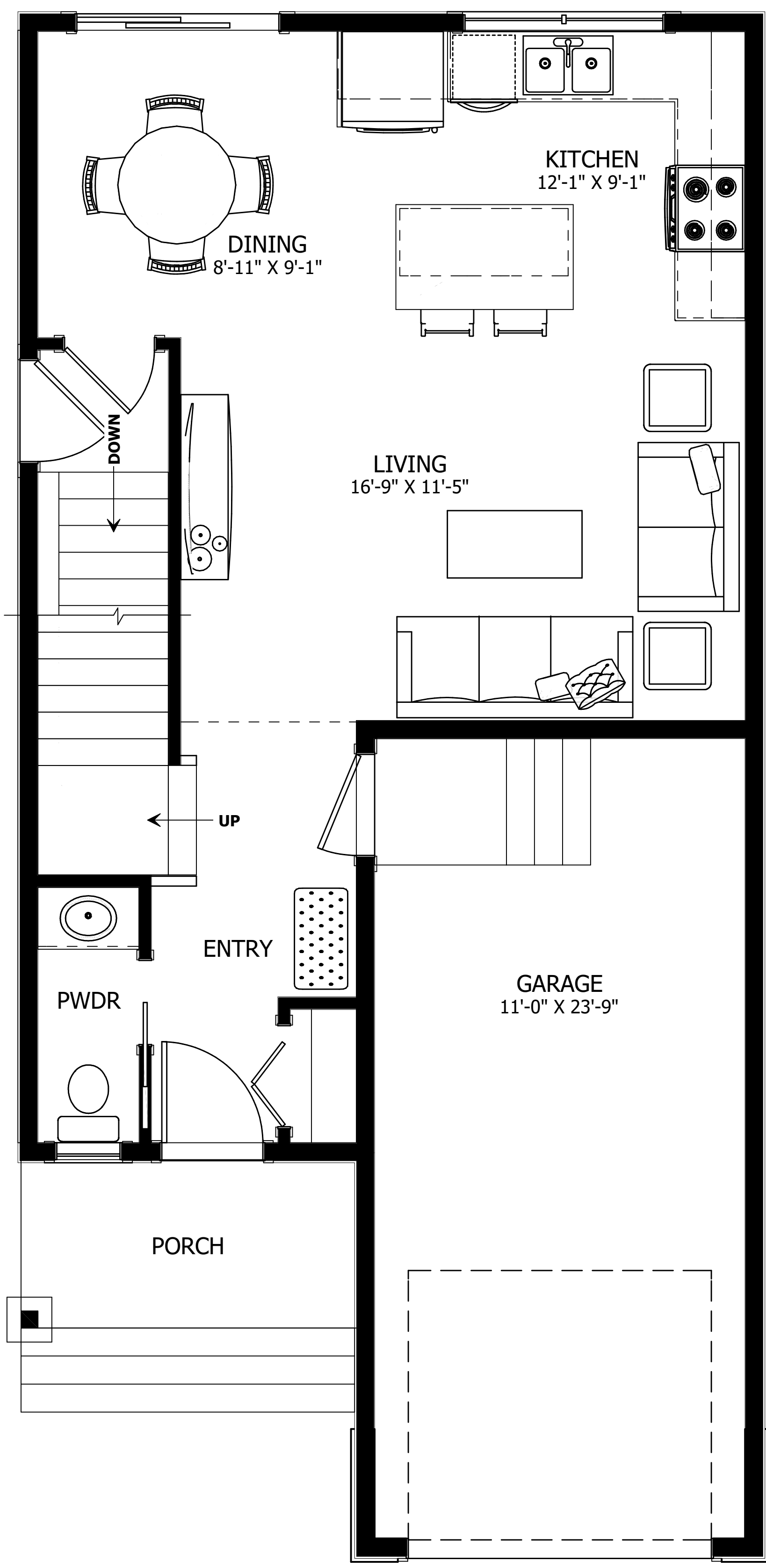



**WESTWOOD  
HEIGHTS**

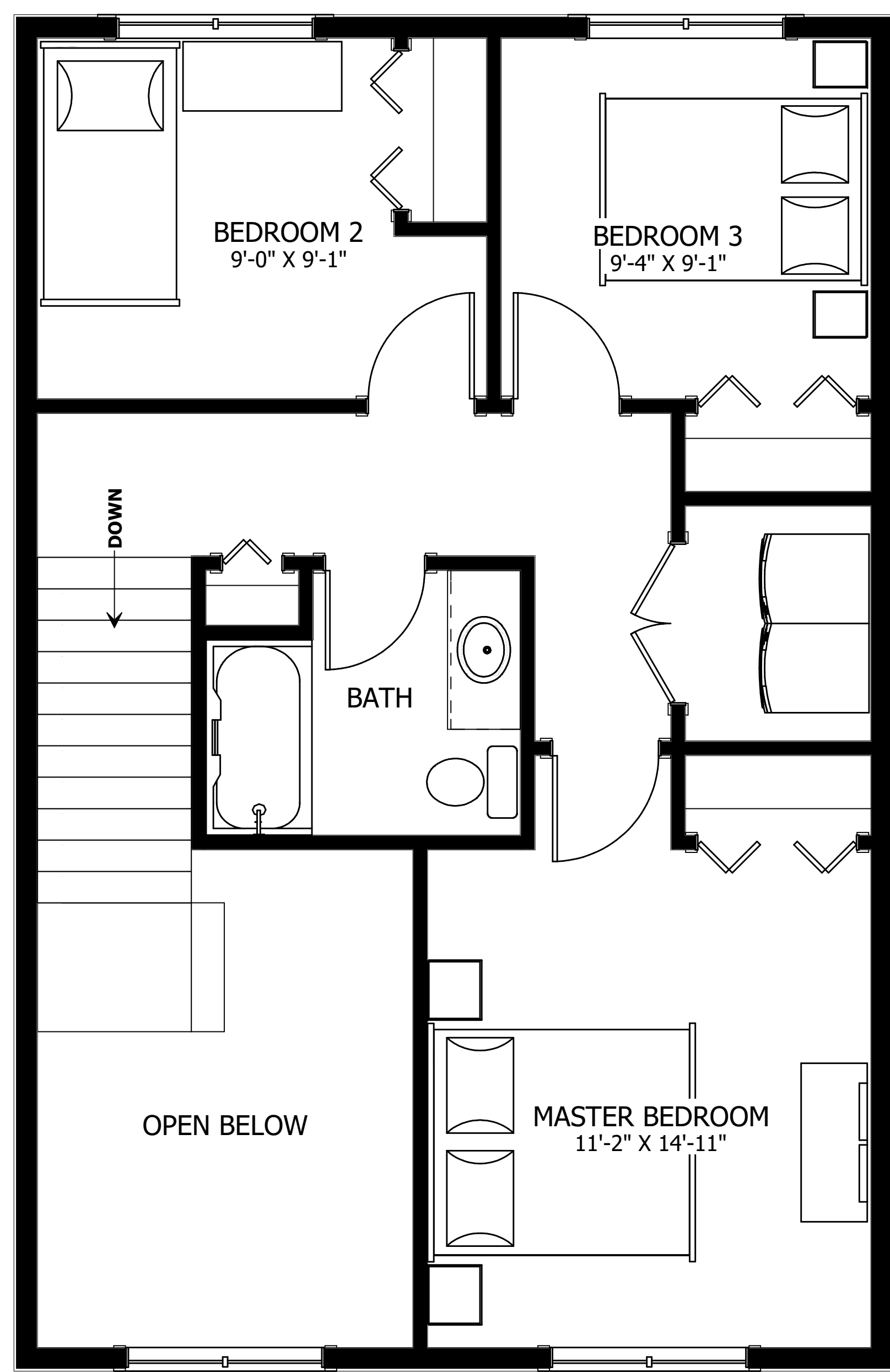
The Frayn

3 BED - 1.5 BATH

22'-0" X 44'-0"



**MAIN FLOOR PLAN**  
LIVING AREA: 570 SQ FT



**UPPER FLOOR PLAN**  
LIVING AREA: 695 SQ FT

**LOWER FLOOR PLAN**  
DEVELOPABLE AREA: 477 SQ FT



**NEW DAWN  
DEVELOPMENTS**

CALL US TODAY: 250-489-1519  
WWW.NEWDAWNDEVELOPMENTS.COM