

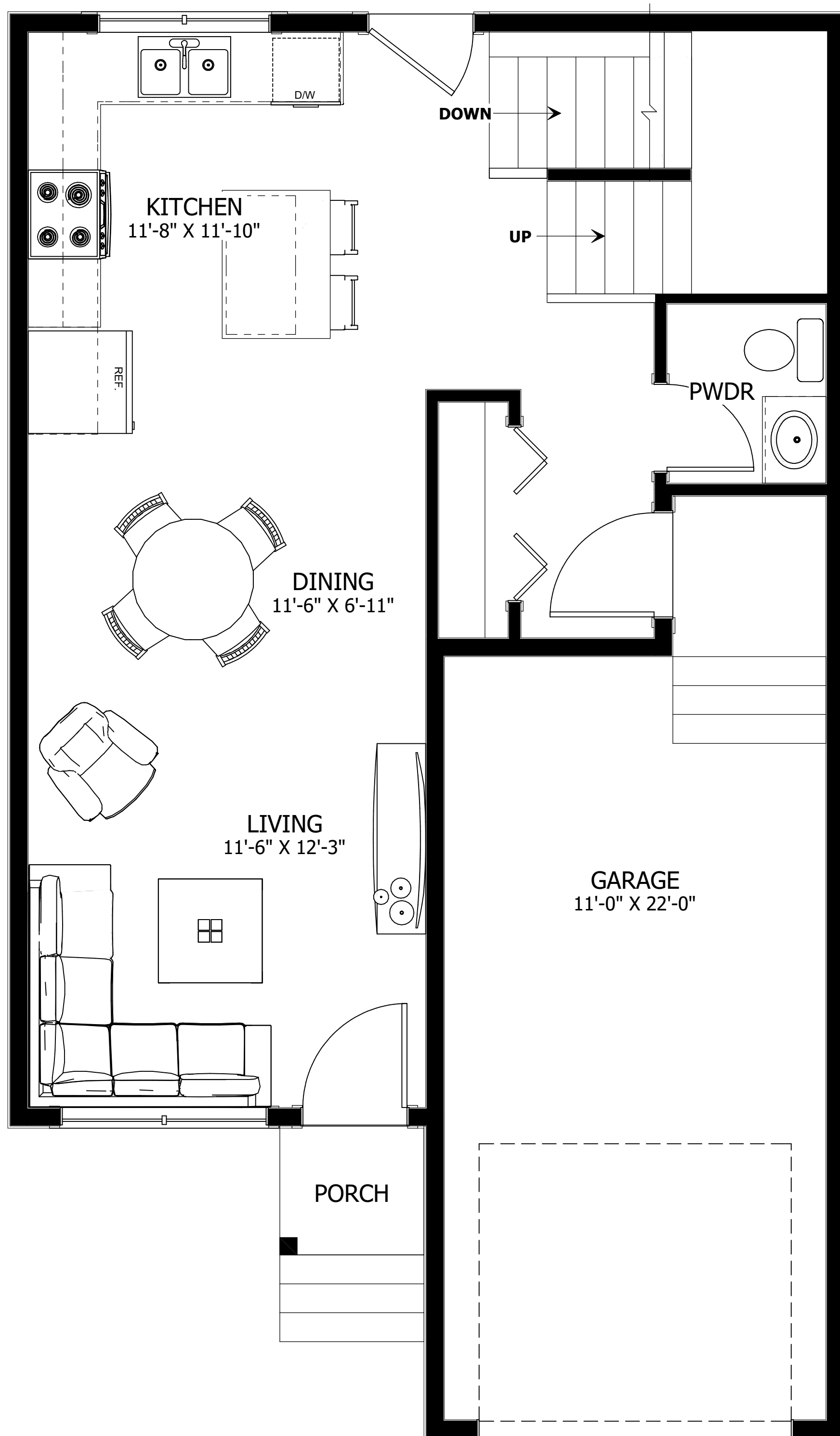


**WESTWOOD  
HEIGHTS**

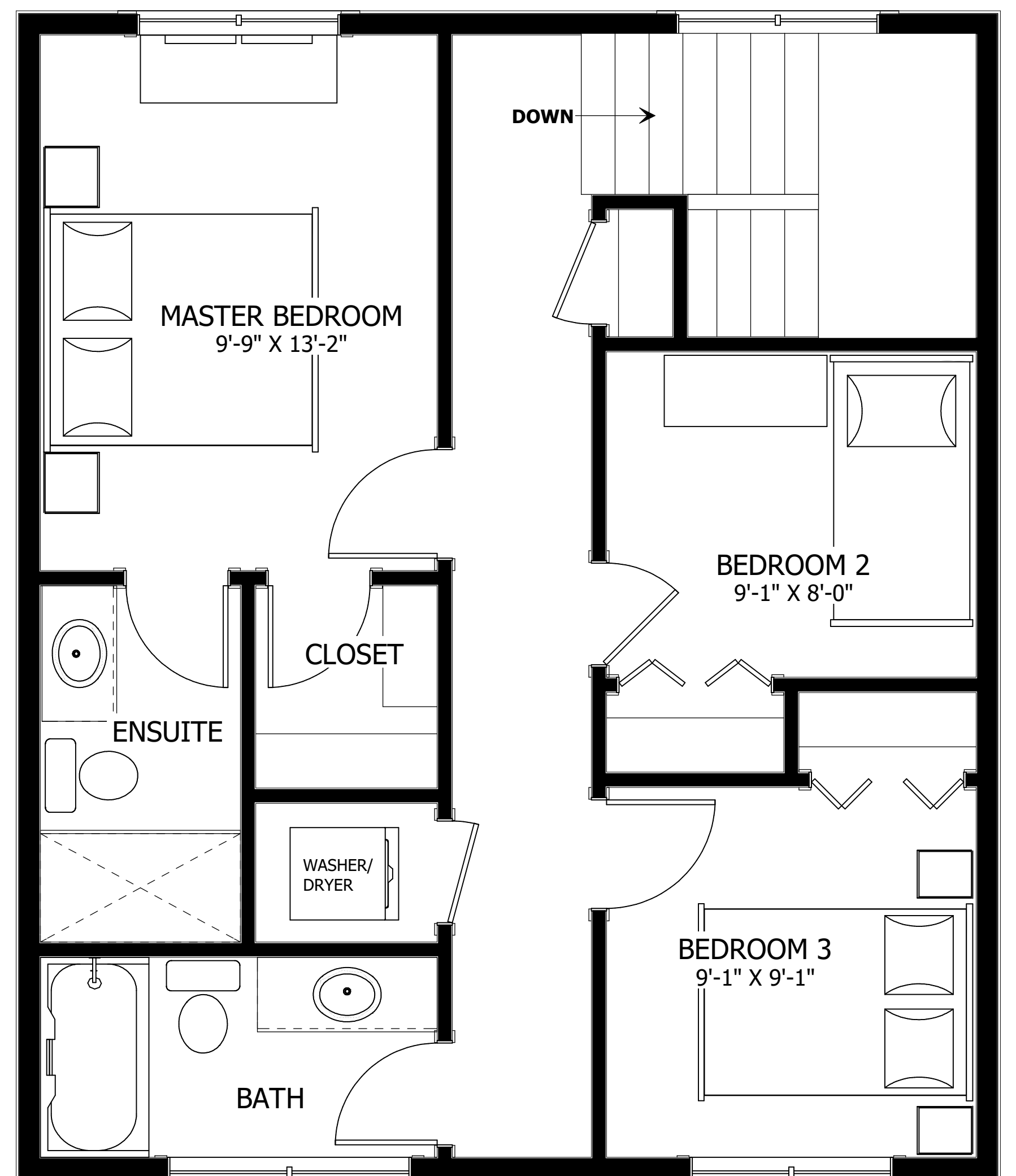
**The Hosmer**

3 BED - 2.5 BATH

24'-0" X 36'-6"



**MAIN FLOOR PLAN**  
LIVING AREA: 507 SQ FT



**UPPER FLOOR PLAN**  
LIVING AREA: 617 SQ FT

**LOWER FLOOR PLAN**  
DEVELOPABLE AREA: 435 SQ FT



**NEW DAWN  
DEVELOPMENTS**

CALL US TODAY: 250-489-1519  
WWW.NEWDAWNDEVELOPMENTS.COM