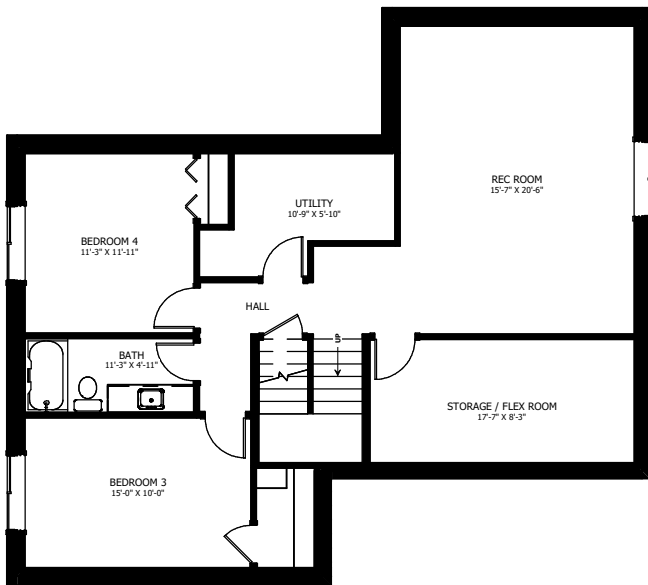




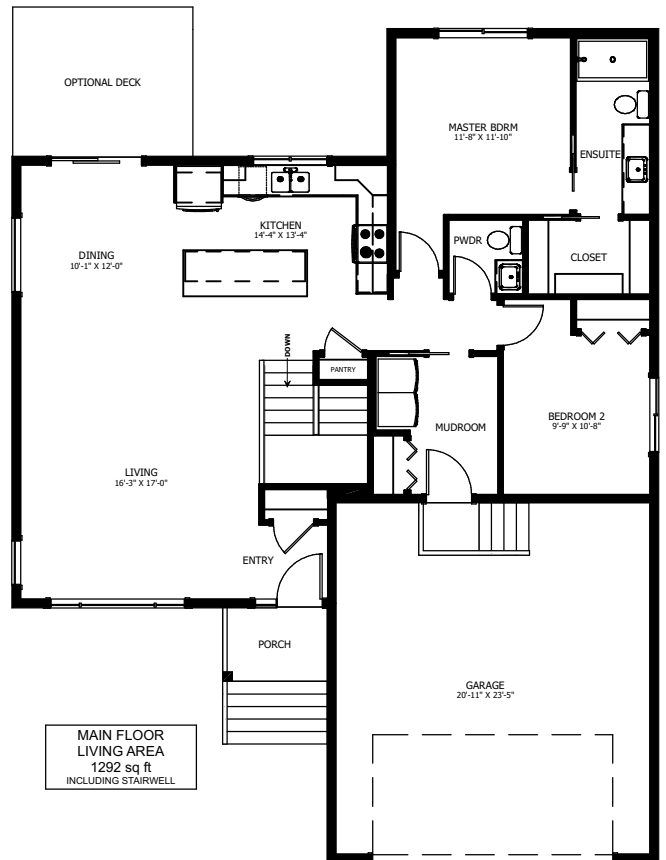
THE BROOKLYN

4 BED - 2.5 BATH

43'-0" X 55'-6"



LIVING AREA
1294 sq ft
INCLUDING STAIRWELL



MAIN FLOOR
LIVING AREA
1292 sq ft
INCLUDING STAIRWELL



NEW DAWN
DEVELOPMENTS

CALL US TODAY: 250-489-1519
WWW.NEWDAWNDEVELOPMENTS.COM