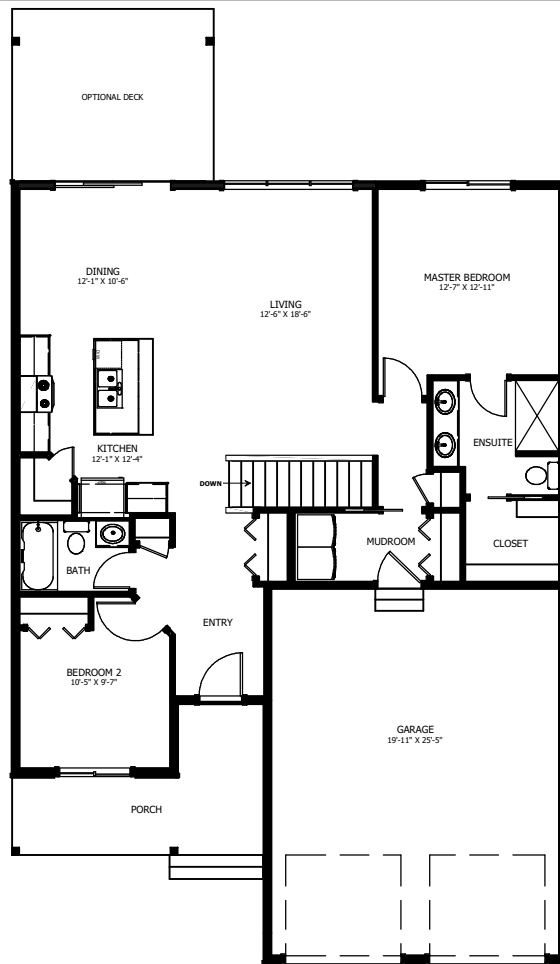




THE JUNIPER

2 + 2 BED - 2 + 1 BATH

38'-6" X 48'-9"



MAIN FLOOR
LIVING AREA
1256 sq ft
INCLUDING 33 sq ft STAIRWELL



NEW DAWN
DEVELOPMENTS

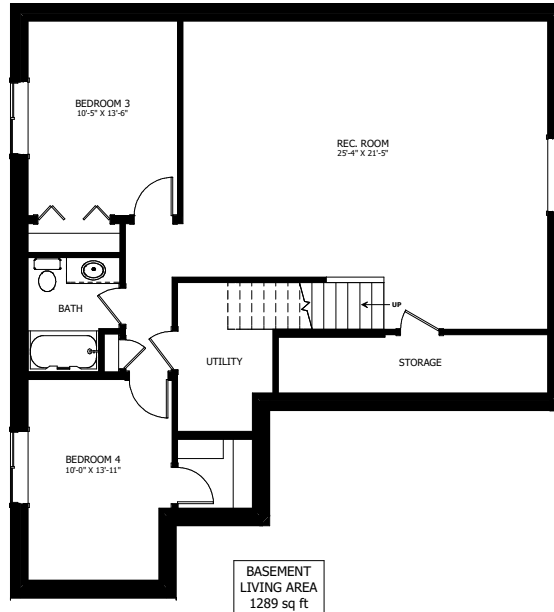
CALL US TODAY: 250-489-1519
WWW.NEWDAWNDEVELOPMENTS.COM

FLOOR PLAN HIGHLIGHTS:

- KITCHEN ISLAND WITH EATING BAR
- LARGE FRONT PORCH
- LARGE CORNER PANTRY
- MAIN FLOOR LAUNDRY
- WALK-IN MASTER CLOSET

OPTIONAL UPGRADES:

- DEVELOPED BASEMENT WITH TWO ADDITIONAL BEDROOMS, BATH, & REC ROOM
- COVERED REAR DECK
- VAULTED CEILING IN KITCHEN & LIVING ROOM



NEW DAWN
DEVELOPMENTS

PLANS AND ELEVATIONS ARE APPROXIMATE AND DISPLAY NON-STANDARD FEATURES. ELEVATIONS MAY VARY BY COMMUNITY & THE BUILDER RESERVES THE RIGHT TO MAKE MODIFICATIONS WITHOUT NOTICE. ALL FLOOR PLANS AND ELEVATIONS ARE THE EXCLUSIVE PROPERTY OF NEW DAWN DEVELOPMENTS. ALL RIGHTS RESERVED, INCLUDING THE RIGHT OF REPRODUCTION, IN PART OR IN WHOLE. LAST UPDATED: NOVEMBER 2023