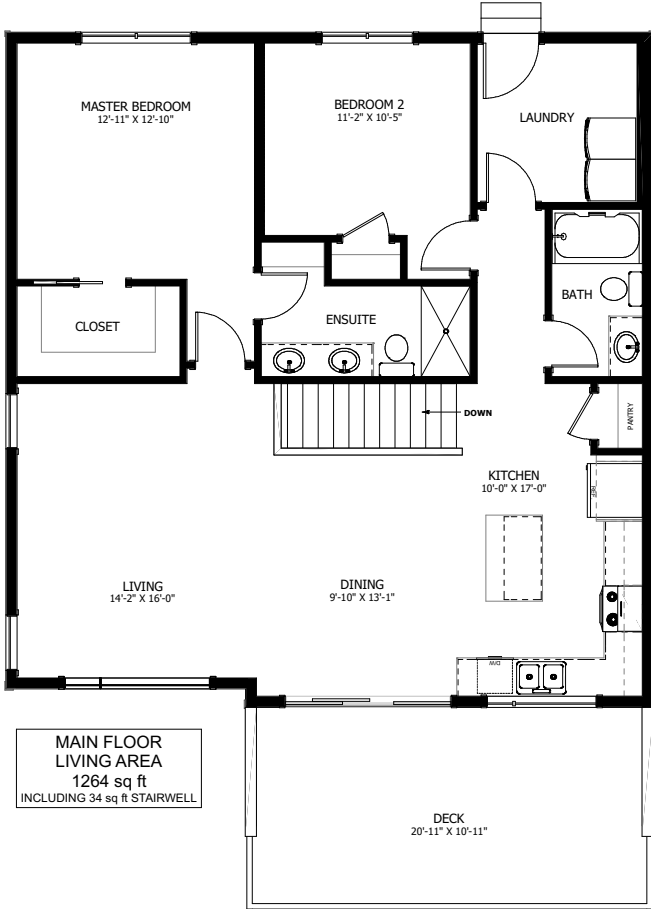




THE STEEPLES MODERN

2 + 2 BED - 2 + 1 BATH

35'-0" X 45'-6"



NEW DAWN
DEVELOPMENTS

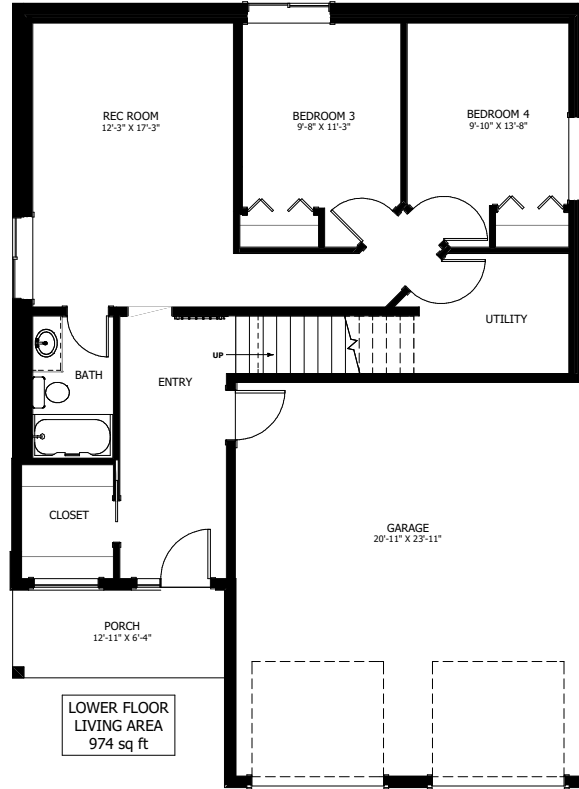
CALL US TODAY: 250-489-1519
WWW.NEWDAWNDEVELOPMENTS.COM

FLOOR PLAN HIGHLIGHTS:

- LARGE FRONT DECK
- SPACIOUS ENTRY WITH WALK-IN CLOSET
- ISLAND WITH EATING BAR
- MAIN FLOOR LAUNDRY
- WALK-IN MASTER CLOSET

OPTIONAL UPGRADES:

- DEVELOPED ENTRY LEVEL WITH TWO BEDROOMS, BATH, & REC ROOM
- VAULTED CEILING IN KITCHEN, LIVING, AND DINING
- COVERED FRONT DECK
- GAS FIREPLACE IN LIVING ROOM



NEW DAWN
DEVELOPMENTS

PLANS AND ELEVATIONS ARE APPROXIMATE AND DISPLAY NON-STANDARD FEATURES. ELEVATIONS MAY VARY BY COMMUNITY & THE BUILDER RESERVES THE RIGHT TO MAKE MODIFICATIONS WITHOUT NOTICE. ALL FLOOR PLANS AND ELEVATIONS ARE THE EXCLUSIVE PROPERTY OF NEW DAWN DEVELOPMENTS. ALL RIGHTS RESERVED, INCLUDING THE RIGHT OF REPRODUCTION, IN PART OR IN WHOLE. LAST UPDATED: NOVEMBER 2023