

THE MICHEL

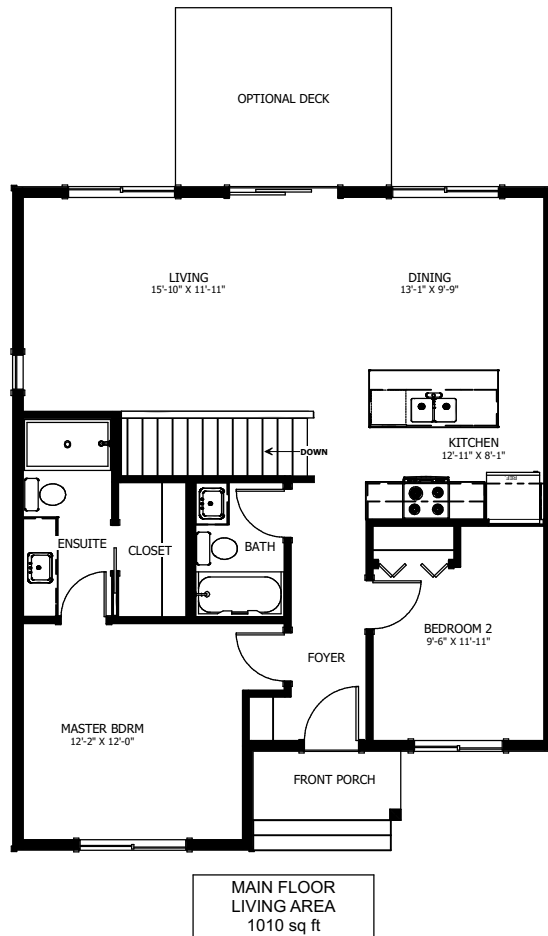


SOUTHWOOD

HEIGHTS

2 BED - 2 BATH

30'-0" X 36'-9"



NEW DAWN
DEVELOPMENTS

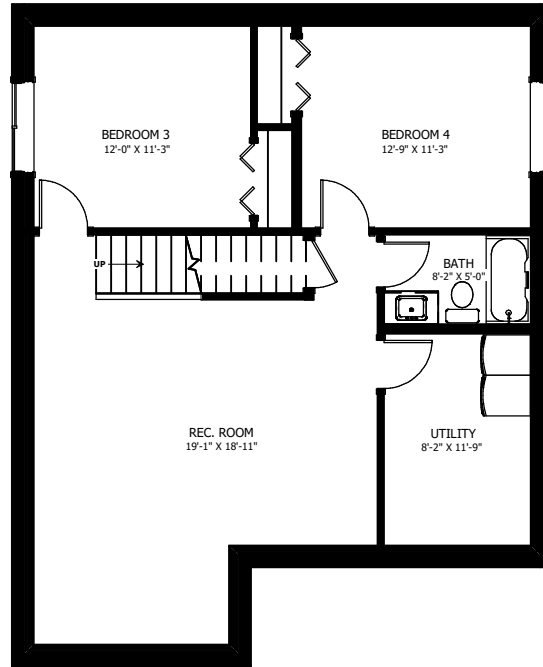
CALL US TODAY: 250-489-1519
WWW.NEWDAWNDEVELOPMENTS.COM

FLOOR PLAN HIGHLIGHTS:

- KITCHEN ISLAND WITH EATING BAR
- MASTER BEDROOM WITH ENSUITE
- POWDER ROOM ON MAIN FLOOR
- OPEN CONCEPT KITCHEN, LIVING, AND DINING

OPTIONAL UPGRADES:

- DEVELOPED BASEMENT WITH ADDITIONAL 2 BEDROOMS, REC ROOM, & BATH
- SECOND SINK IN ENSUITE
- REAR DECK
- EXTERIOR STONE ACCENTS



BASEMENT
LIVING AREA
1010 sq ft
INCLUDING STAIRWELL



NEW DAWN
DEVELOPMENTS

PLANS AND ELEVATIONS ARE APPROXIMATE AND DISPLAY NON-STANDARD FEATURES. ELEVATIONS MAY VARY BY COMMUNITY & THE BUILDER RESERVES THE RIGHT TO MAKE MODIFICATIONS WITHOUT NOTICE. ALL FLOOR PLANS AND ELEVATIONS ARE THE EXCLUSIVE PROPERTY OF NEW DAWN DEVELOPMENTS. ALL RIGHTS RESERVED, INCLUDING THE RIGHT OF REPRODUCTION, IN PART OR IN WHOLE. LAST UPDATED: MARCH 2024