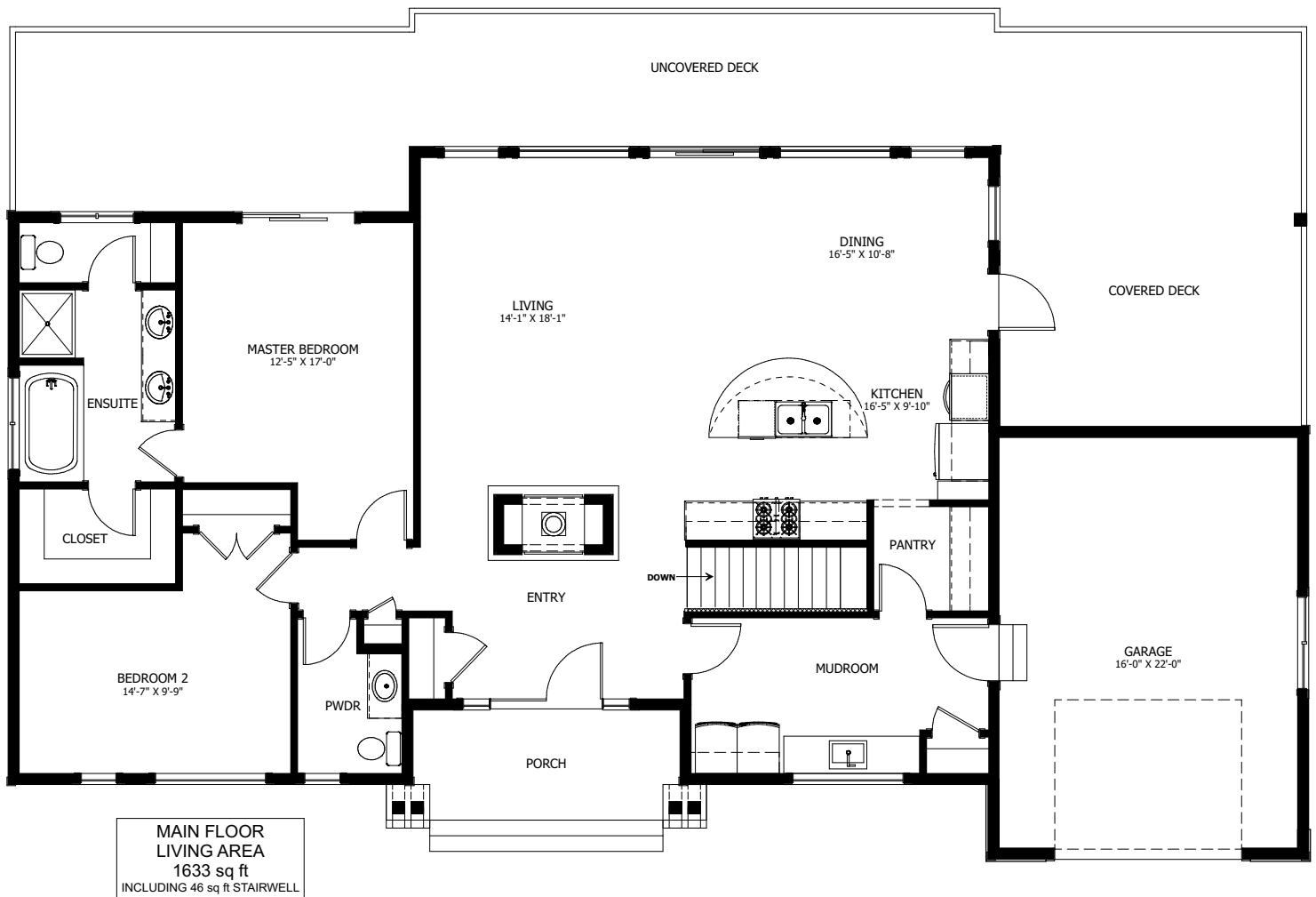


# THE BITTERN



2 BED - 1.5 BATH

69'-6" X 38'-0"



NEW DAWN  
DEVELOPMENTS

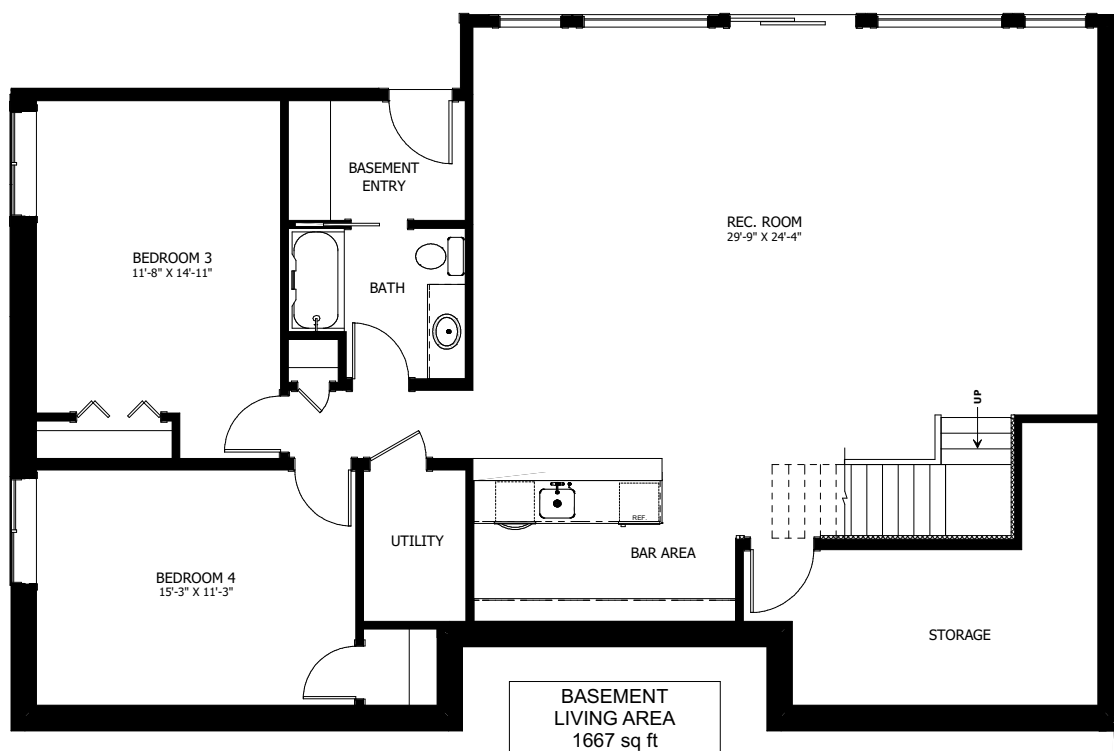
CALL US TODAY: 250-489-1519  
[WWW.NEWDAWNDEVELOPMENTS.COM](http://WWW.NEWDAWNDEVELOPMENTS.COM)

### FLOOR PLAN HIGHLIGHTS:

- FEATURE DOUBLE DOOR ENTRY
- DOUBLE SIDED FIREPLACE
- LARGE MUDROOM & LAUNDRY WITH WALK-THROUGH PANTRY
- FULL WIDTH REAR DECK
- MASTER BEDROOM DECK ACCESS

### OPTIONAL UPGRADES:

- DEVELOPED BASEMENT WITH REC. ROOM, 2 BEDROOMS, & BATH
- TWO SIDED BASEMENT BAR
- SCREENED IN PORCH ON SIDE DECK
- FEATURE STONE STAIRWELL
- T&G CEILINGS THROUGHOUT



**NEW DAWN**  
DEVELOPMENTS

PLANS AND ELEVATIONS ARE APPROXIMATE AND DISPLAY NON-STANDARD FEATURES.  
ELEVATIONS MAY VARY BY COMMUNITY & THE BUILDER RESERVES THE RIGHT TO  
MAKE MODIFICATIONS WITHOUT NOTICE. ALL FLOOR PLANS AND ELEVATIONS ARE  
THE EXCLUSIVE PROPERTY OF NEW DAWN DEVELOPMENTS. ALL RIGHTS RESERVED.  
INCLUDING THE RIGHT OF REPRODUCTION, IN PART OR IN WHOLE.  
LAST UPDATED: FEBRUARY 2024