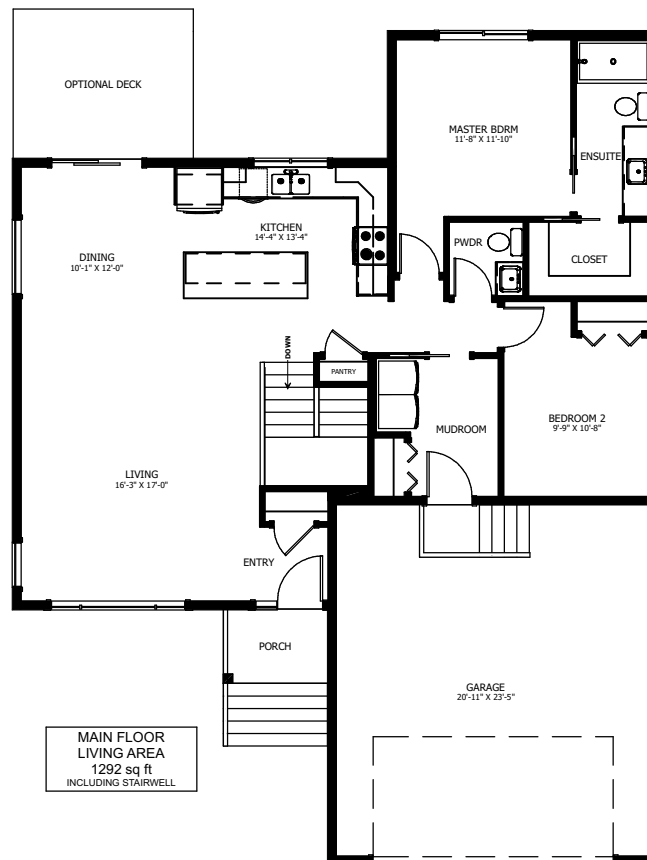


THE BROOKLYN



2 BED - 1.5 BATH

43'-0" X 55'-6"



NEW DAWN
DEVELOPMENTS

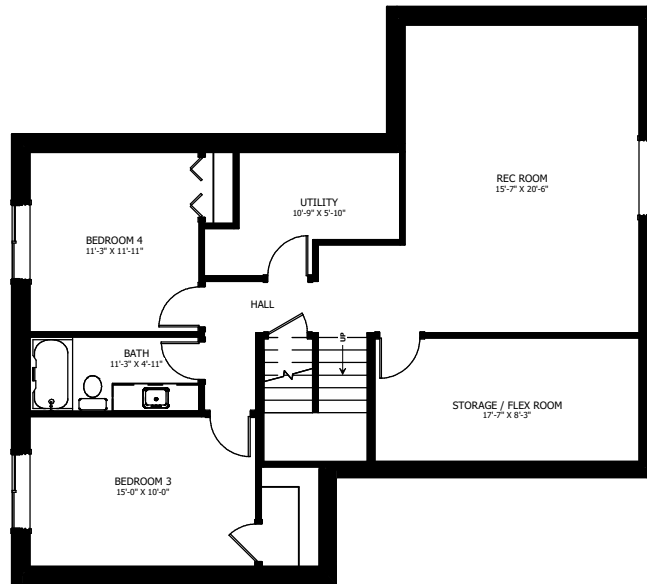
CALL US TODAY: 250-489-1519
WWW.NEWDAWNDEVELOPMENTS.COM

FLOOR PLAN HIGHLIGHTS:

- KITCHEN ISLAND WITH EATING BAR
- OPEN CONCEPT KITCHEN, LIVING, AND DINING
- MASTER BEDROOM WITH ENSUITE & WALK-IN CLOSET
- MAIN FLOOR LAUNDRY

OPTIONAL UPGRADES:

- DEVELOPED BASEMENT WITH ADDITIONAL 2 BEDROOMS, REC ROOM, & BATH
- FIREPLACE IN LIVING ROOM
- REAR DECK
- SECOND SINK IN ENSUITE



LIVING AREA
1294 sq ft
INCLUDING STAIRWELL



NEW DAWN
DEVELOPMENTS

PLANS AND ELEVATIONS ARE APPROXIMATE AND DISPLAY NON-STANDARD FEATURES.
ELEVATIONS MAY VARY BY COMMUNITY & THE BUILDER RESERVES THE RIGHT TO
MAKE MODIFICATIONS WITHOUT NOTICE. ALL FLOOR PLANS AND ELEVATIONS ARE
THE EXCLUSIVE PROPERTY OF NEW DAWN DEVELOPMENTS. ALL RIGHTS RESERVED,
INCLUDING THE RIGHT OF REPRODUCTION, IN PART OR IN WHOLE.
LAST UPDATED: MARCH 2024