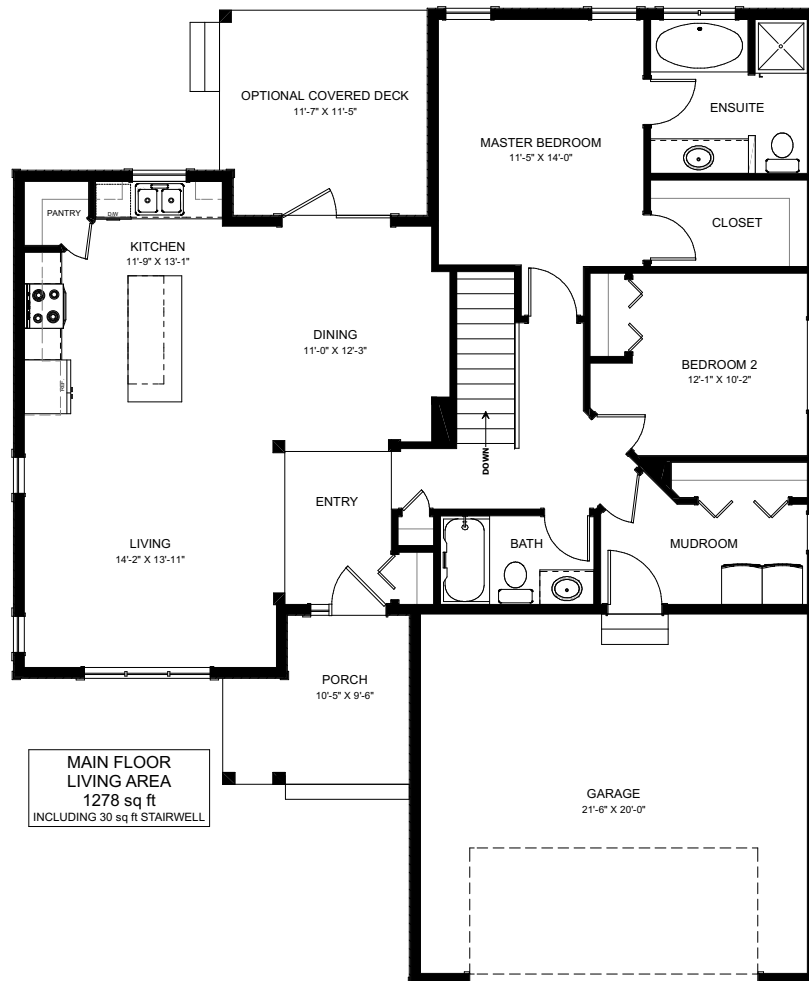


THE CHINOOK



2 BED - 2 BATH

44'-6" X 54'-0"



NEW DAWN
DEVELOPMENTS

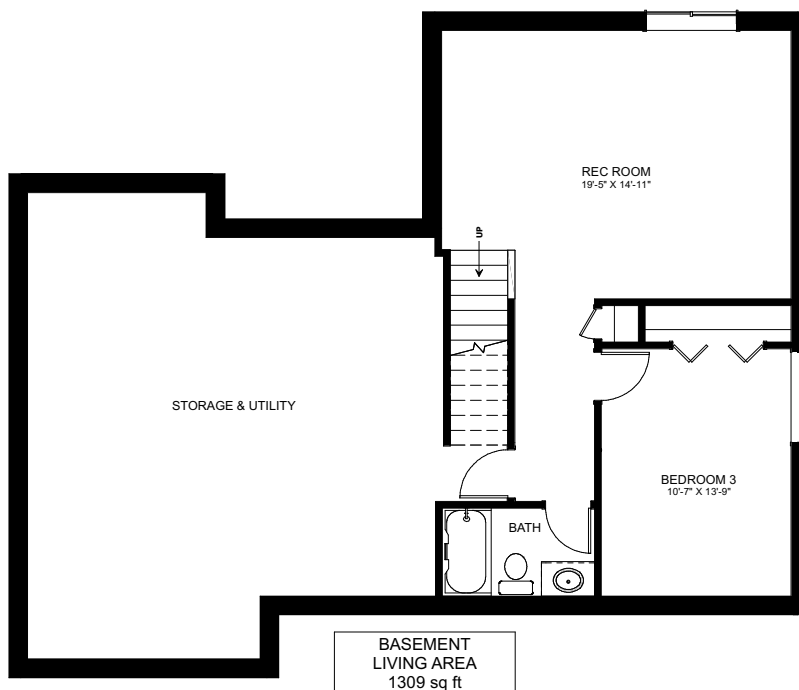
CALL US TODAY: 250-489-1519
WWW.NEWDAWNDEVELOPMENTS.COM

FLOOR PLAN HIGHLIGHTS:

- LARGE FRONT LIVING ROOM
- 'L' SHAPED KITCHEN WITH CORNER PANTRY
- OVERSIZED ENSUITE & WALK-IN MASTER CLOSET
- MAIN FLOOR LAUNDRY

OPTIONAL UPGRADES:

- DEVELOPED BASEMENT WITH ADDITIONAL BEDROOM & BATH
- GAS FIREPLACE IN LIVING ROOM
- 2ND SINK IN ENSUITE
- 9' HIGH BASEMENT CEILING
- REAR COVERED DECK



NEW DAWN
DEVELOPMENTS

PLANS AND ELEVATIONS ARE APPROXIMATE AND DISPLAY NON-STANDARD FEATURES. ELEVATIONS MAY VARY BY COMMUNITY & THE BUILDER RESERVES THE RIGHT TO MAKE MODIFICATIONS WITHOUT NOTICE. ALL FLOOR PLANS AND ELEVATIONS ARE THE EXCLUSIVE PROPERTY OF NEW DAWN DEVELOPMENTS. ALL RIGHTS RESERVED, INCLUDING THE RIGHT OF REPRODUCTION, IN PART OR IN WHOLE. LAST UPDATED: JANUARY 2024