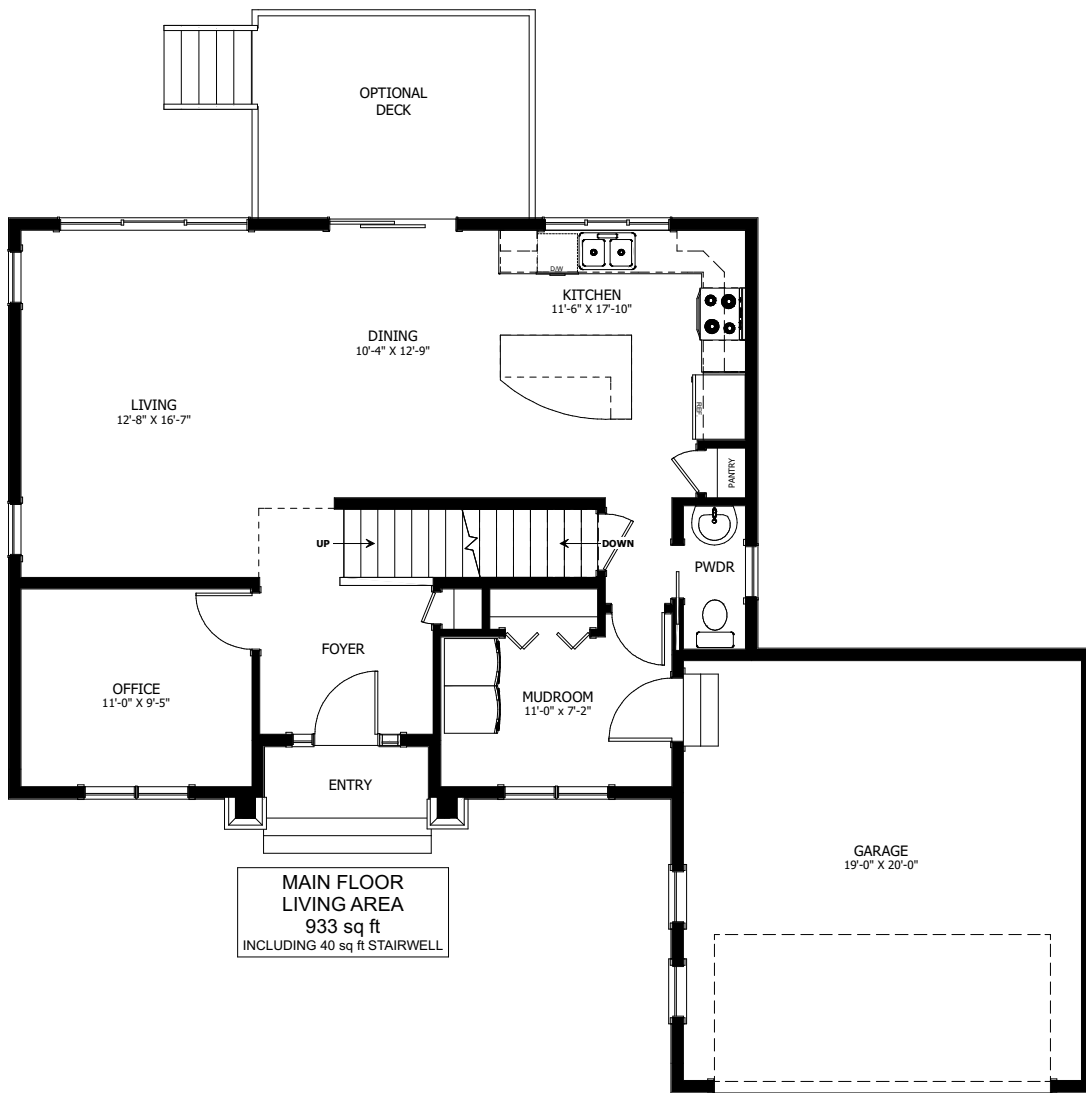


THE BLUEBIRD



3 BED + DEN - 2.5 BATH

51'-6" X 41'-6"



NEW DAWN
DEVELOPMENTS

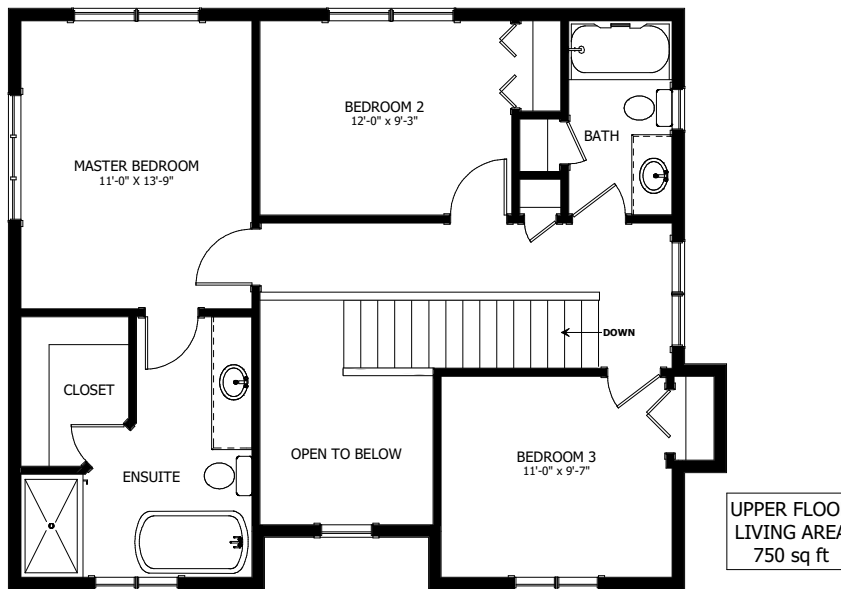
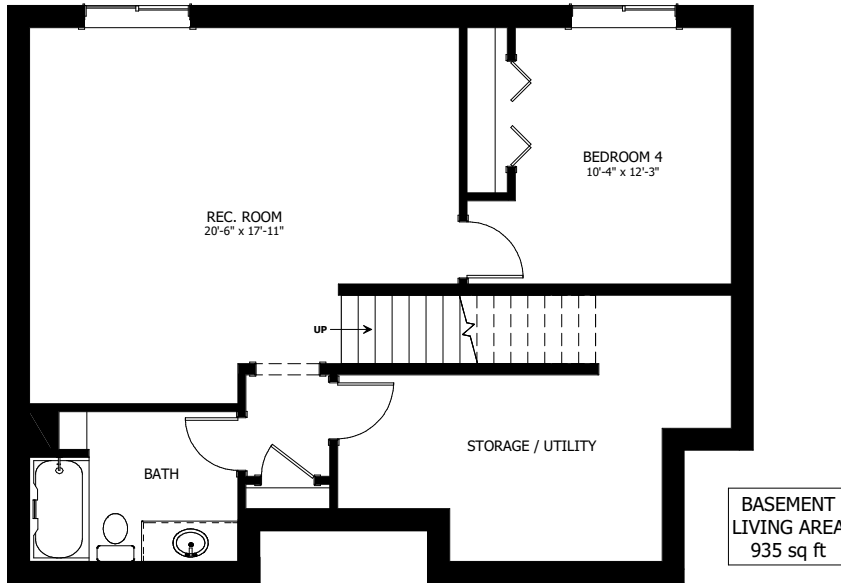
CALL US TODAY: 250-489-1519
WWW.NEWDAWNDEVELOPMENTS.COM

FLOOR PLAN HIGHLIGHTS:

- TWO STOREY FRONT ENTRY
- MAIN FLOOR OFFICE
- OVERSIZED MUDROOM
- LARGE 'L' SHAPED KITCHEN
- 4 PIECE ENSUITE
- OPEN CONCEPT MAIN FLOOR

OPTIONAL UPGRADES:

- DEVELOPED BASEMENT WITH ADDITIONAL BEDROOM, REC ROOM, & BATH
- FULL REAR DECK
- LOWER LEVEL WALK-OUT
- EXTERIOR STONE ACCENTS



**NEW DAWN
DEVELOPMENTS**

PLANS AND ELEVATIONS ARE APPROXIMATE AND DISPLAY NON-STANDARD FEATURES. ELEVATIONS MAY VARY BY COMMUNITY & THE BUILDER RESERVES THE RIGHT TO MAKE MODIFICATIONS WITHOUT NOTICE. ALL FLOOR PLANS AND ELEVATIONS ARE THE EXCLUSIVE PROPERTY OF NEW DAWN DEVELOPMENTS. ALL RIGHTS RESERVED, INCLUDING THE RIGHT OF REPRODUCTION, IN PART OR IN WHOLE. LAST UPDATED, JUNE 2022