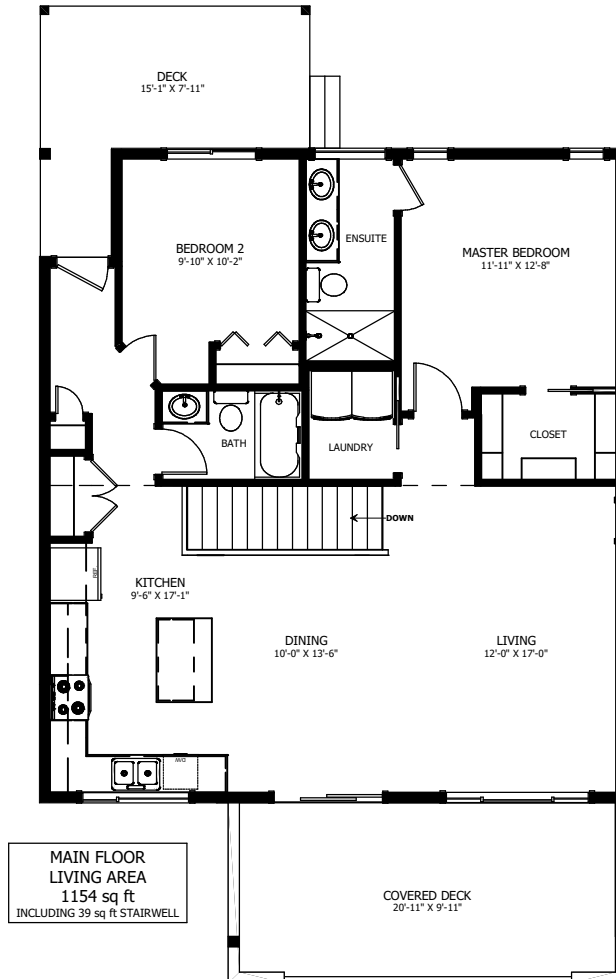


# THE CARDINAL



3 BED + DEN - 2.5 BATH

32'-6" X 44'-3"



NEW DAWN  
DEVELOPMENTS

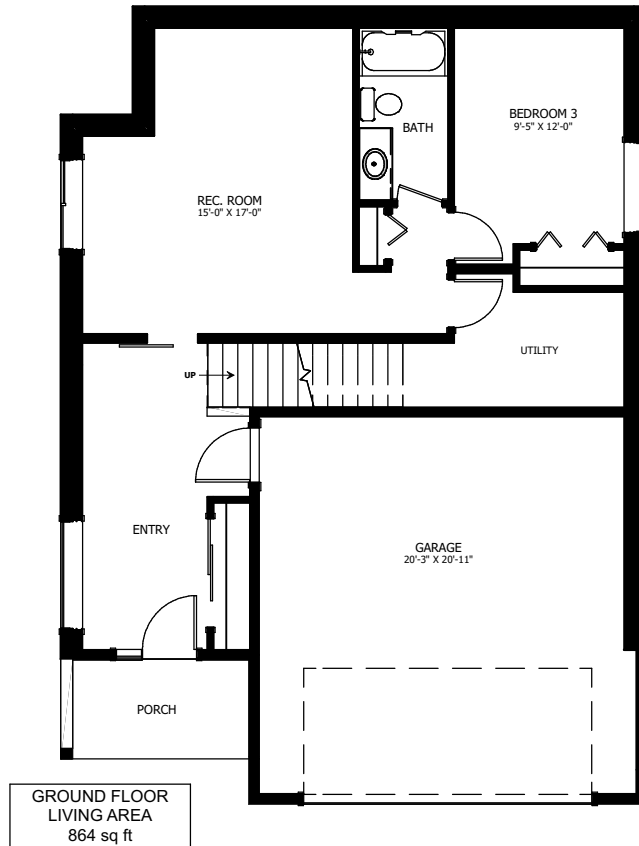
CALL US TODAY: 250-489-1519  
[WWW.NEWDAWNDEVELOPMENTS.COM](http://WWW.NEWDAWNDEVELOPMENTS.COM)

**FLOOR PLAN HIGHLIGHTS:**

- OVERSIZED FRONT ENTRY
- FRONT VIEWS
- COVERED FRONT DECK
- LARGE PANTRY
- ISLAND WITH EATING BAR
- LARGE MASTER CLOSET & ENSUITE

**OPTIONAL UPGRADES:**

- DEVELOPED BASEMENT WITH REC. ROOM, BEDROOM, & BATH
- VAULTED CEILING IN OPEN AREAS
- GAS FIREPLACE IN LIVING ROOM
- SECOND SINK IN ENSUITE
- RAILING AROUND STAIRWELL



**NEW DAWN  
DEVELOPMENTS**

PLANS AND ELEVATIONS ARE APPROXIMATE AND DISPLAY NON-STANDARD FEATURES. ELEVATIONS MAY VARY BY COMMUNITY & THE BUILDER RESERVES THE RIGHT TO MAKE MODIFICATIONS WITHOUT NOTICE. ALL FLOOR PLANS AND ELEVATIONS ARE THE EXCLUSIVE PROPERTY OF NEW DAWN DEVELOPMENTS. ALL RIGHTS RESERVED, INCLUDING THE RIGHT OF REPRODUCTION, IN PART OR IN WHOLE. LAST UPDATED: JULY 2024