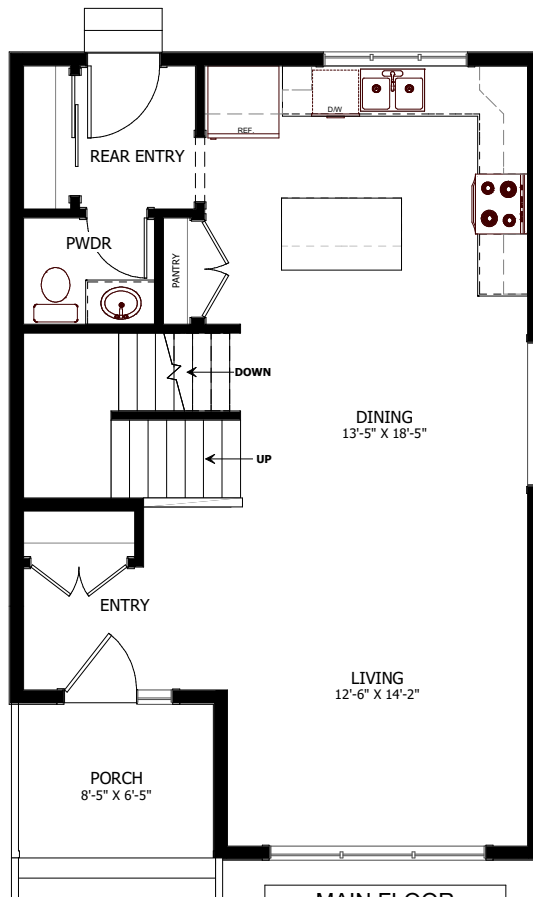




# THE BAKER HILL II

3 BED - 2.5 BATH

22'-0" X 33'-6"



MAIN FLOOR  
LIVING AREA  
682 sq ft  
INCLUDING 59 sq ft STAIRWELL



NEW DAWN  
DEVELOPMENTS

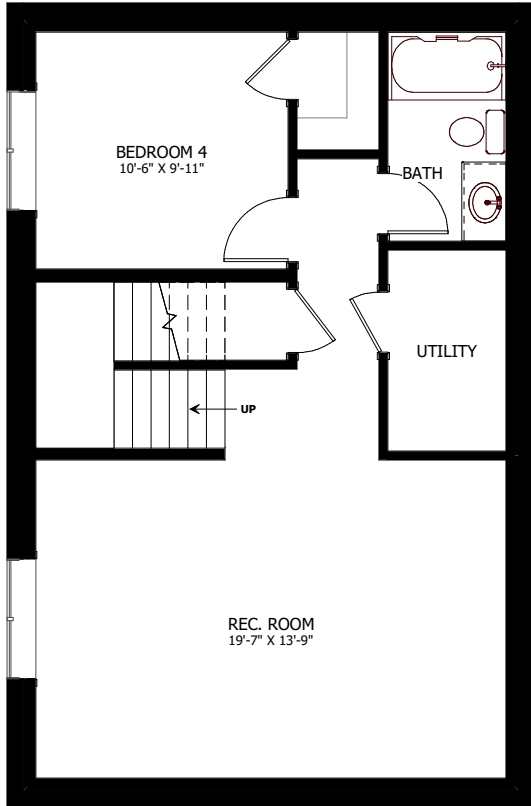
CALL US TODAY: 250-489-1519  
[WWW.NEWDAWNDEVELOPMENTS.COM](http://WWW.NEWDAWNDEVELOPMENTS.COM)

**FLOOR PLAN HIGHLIGHTS:**

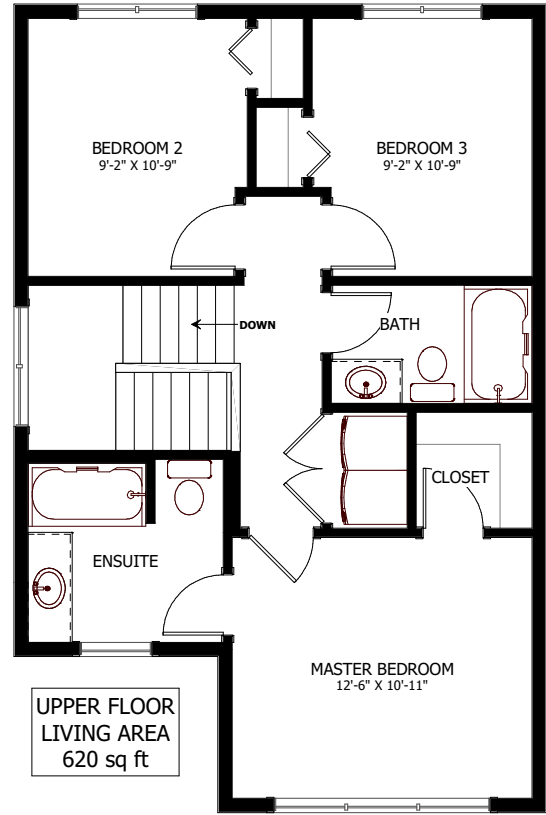
- SPACIOUS 'L' SHAPED KITCHEN
- LARGE FRONT WINDOWS
- MASTER BEDROOM WITH ENSUITE & WALK-IN CLOSET
- UPPER FLOOR LAUNDRY
- BASEMENT SUITE POTENTIAL

**OPTIONAL UPGRADES:**

- DEVELOPED BASEMENT WITH ADDITIONAL BEDROOM, REC ROOM, & BATH
- DETACHED DOUBLE CAR GARAGE
- CANTILEVER TO INCREASE SIZE OF MASTER BEDROOM CLOSET



BASEMENT LIVING AREA 737 sq ft



**NEW DAWN DEVELOPMENTS**

PLANS AND ELEVATIONS ARE APPROXIMATE AND DISPLAY NON-STANDARD FEATURES. ELEVATIONS MAY VARY BY COMMUNITY & THE BUILDER RESERVES THE RIGHT TO MAKE MODIFICATIONS WITHOUT NOTICE. ALL FLOOR PLANS AND ELEVATIONS ARE THE EXCLUSIVE PROPERTY OF NEW DAWN DEVELOPMENTS. ALL RIGHTS RESERVED, INCLUDING THE RIGHT OF REPRODUCTION, IN PART OR IN WHOLE. LAST UPDATED, JUNE 2022