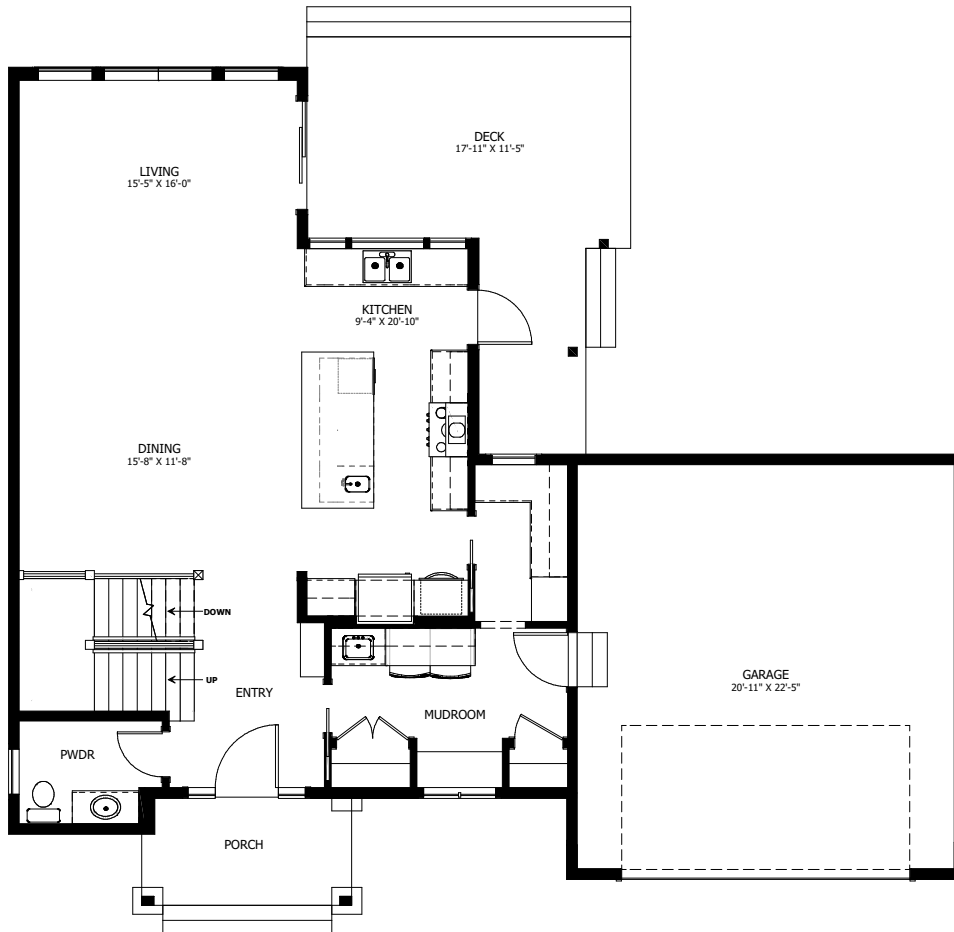


THE PALLISER



1 BED - 1.5 BATH

45'-0" X 53'-0"



MAIN FLOOR
LIVING AREA
1010 sq ft
INCLUDING 81 sq ft STAIRWELL



NEW DAWN
DEVELOPMENTS

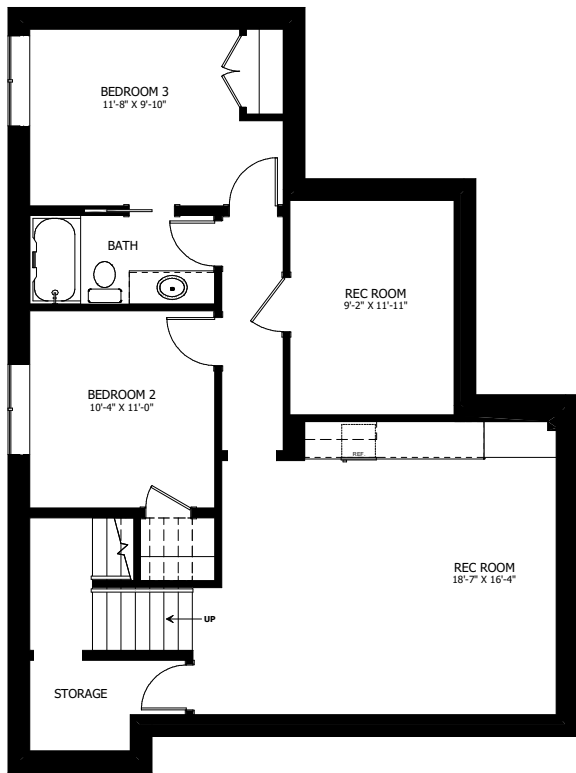
CALL US TODAY: 250-489-1519
WWW.NEWDAWNDEVELOPMENTS.COM

FLOOR PLAN HIGHLIGHTS:

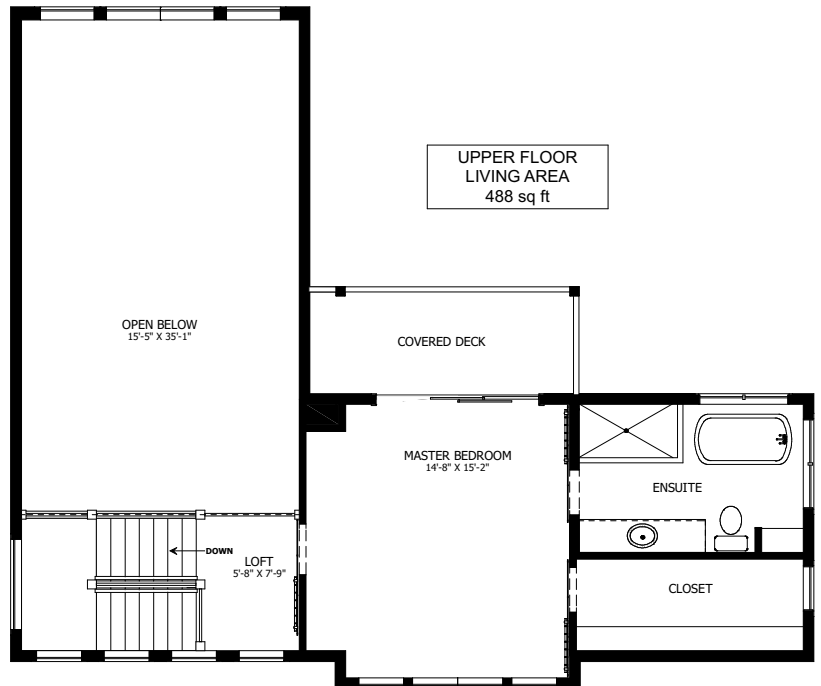
- LARGE MUDROOM
- KITCHEN ISLAND WITH EATING BAR
- LARGE BUTLERS PANTRY
- MASTER BEDROOM WITH LARGE ENSUITE, WALK IN CLOSET AND COVERED DECK

OPTIONAL UPGRADES:

- DEVELOPED BASEMENT WITH REC. ROOM, 2 BEDROOMS, & BATH
- VAULTED CEILING IN KITCHEN, DINING, & LIVING
- SECOND SINK IN ENSUITE
- GAS FIREPLACE IN LIVING ROOM



BASEMENT LIVING AREA 1086 sq ft



NEW DAWN DEVELOPMENTS

PLANS AND ELEVATIONS ARE APPROXIMATE AND DISPLAY NON-STANDARD FEATURES. ELEVATIONS MAY VARY BY COMMUNITY & THE BUILDER RESERVES THE RIGHT TO MAKE MODIFICATIONS WITHOUT NOTICE. ALL FLOOR PLANS AND ELEVATIONS ARE THE EXCLUSIVE PROPERTY OF NEW DAWN DEVELOPMENTS. ALL RIGHTS RESERVED, INCLUDING THE RIGHT OF REPRODUCTION, IN PART OR IN WHOLE. LAST UPDATED, JUNE 2022