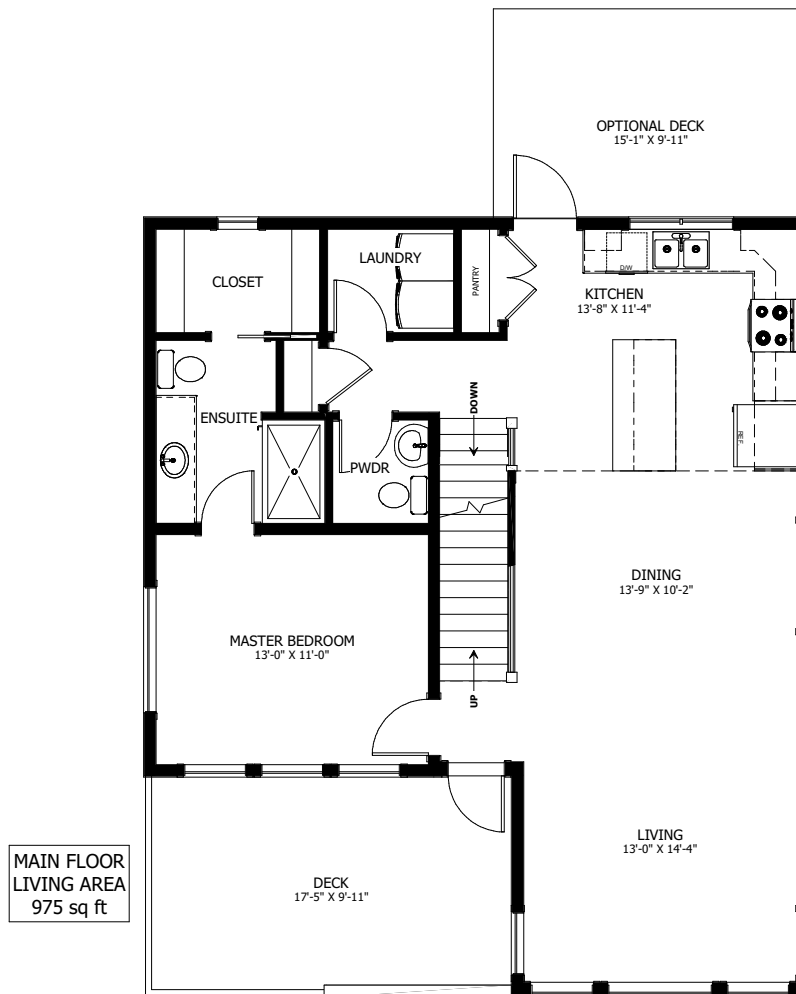


# THE HERON



3 BED + DEN - 2.5 BATH

31'-6" X 44'-6"



NEW DAWN  
DEVELOPMENTS

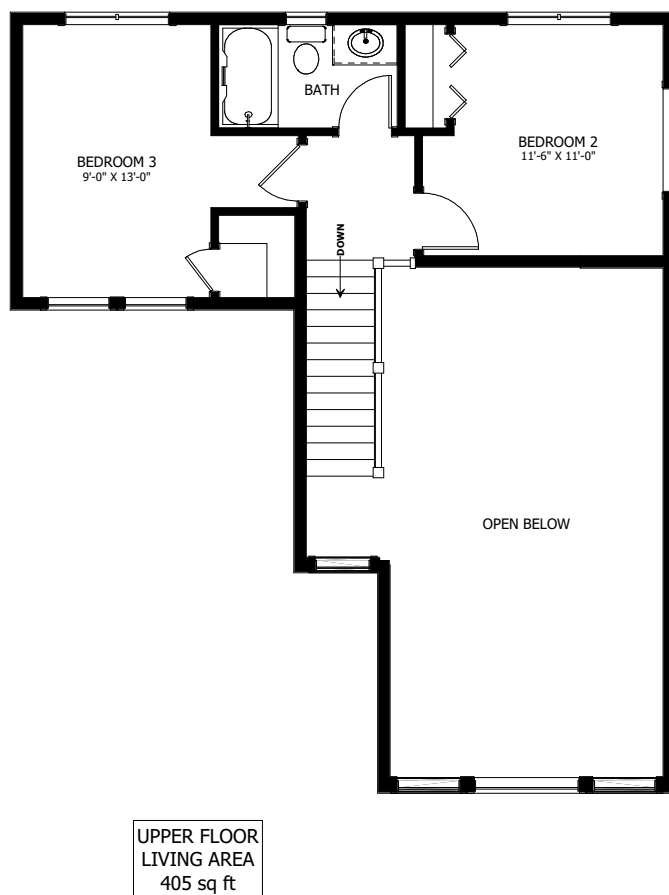
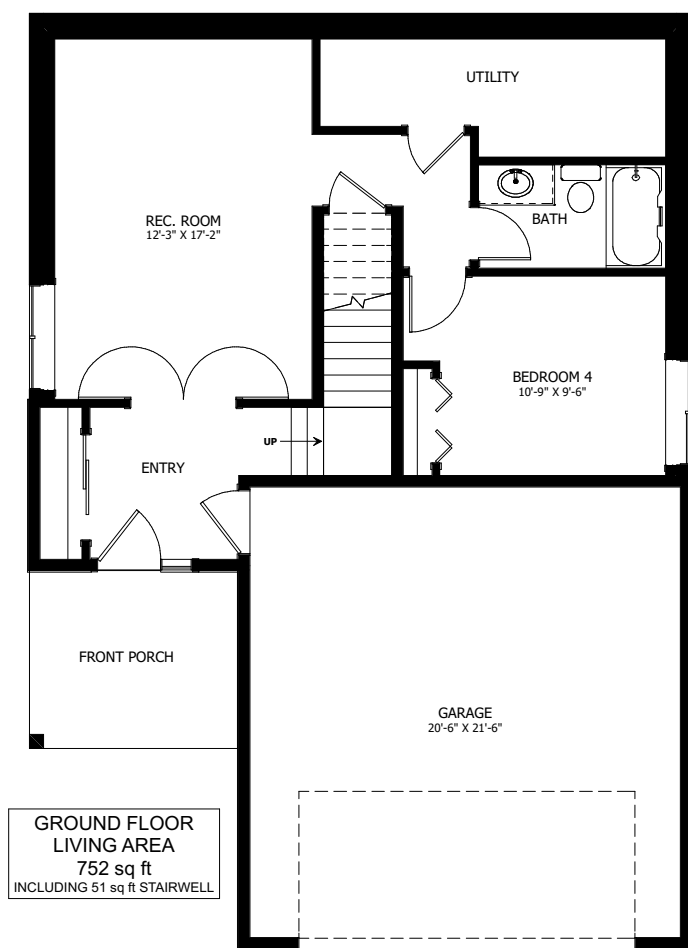
CALL US TODAY: 250-489-1519  
[WWW.NEWDAWNDEVELOPMENTS.COM](http://WWW.NEWDAWNDEVELOPMENTS.COM)

### FLOOR PLAN HIGHLIGHTS:

- MAIN FLOOR MASTER BEDROOM
- MAIN FLOOR LAUNDRY
- LARGE FRONT WINDOW WALL
- PRIVATE FRONT DECK
- 2 STOREY CEILING IN LIVING AND DINING ROOM

### OPTIONAL UPGRADES:

- DEVELOPED GROUND LEVEL WITH LARGE REC ROOM, ADDITIONAL BEDROOM, & BATH
- FULL REAR DECK
- EXTERIOR STONE ACCENTS
- OPEN RAILINGS



NEW DAWN  
DEVELOPMENTS

PLANS AND ELEVATIONS ARE APPROXIMATE AND DISPLAY NON-STANDARD FEATURES.  
ELEVATIONS MAY VARY BY COMMUNITY & THE BUILDER RESERVES THE RIGHT TO  
MAKE MODIFICATIONS WITHOUT NOTICE. ALL FLOOR PLANS AND ELEVATIONS ARE  
THE EXCLUSIVE PROPERTY OF NEW DAWN DEVELOPMENTS. ALL RIGHTS RESERVED,  
INCLUDING THE RIGHT OF REPRODUCTION, IN PART OR IN WHOLE.  
LAST UPDATED: APRIL 2024