

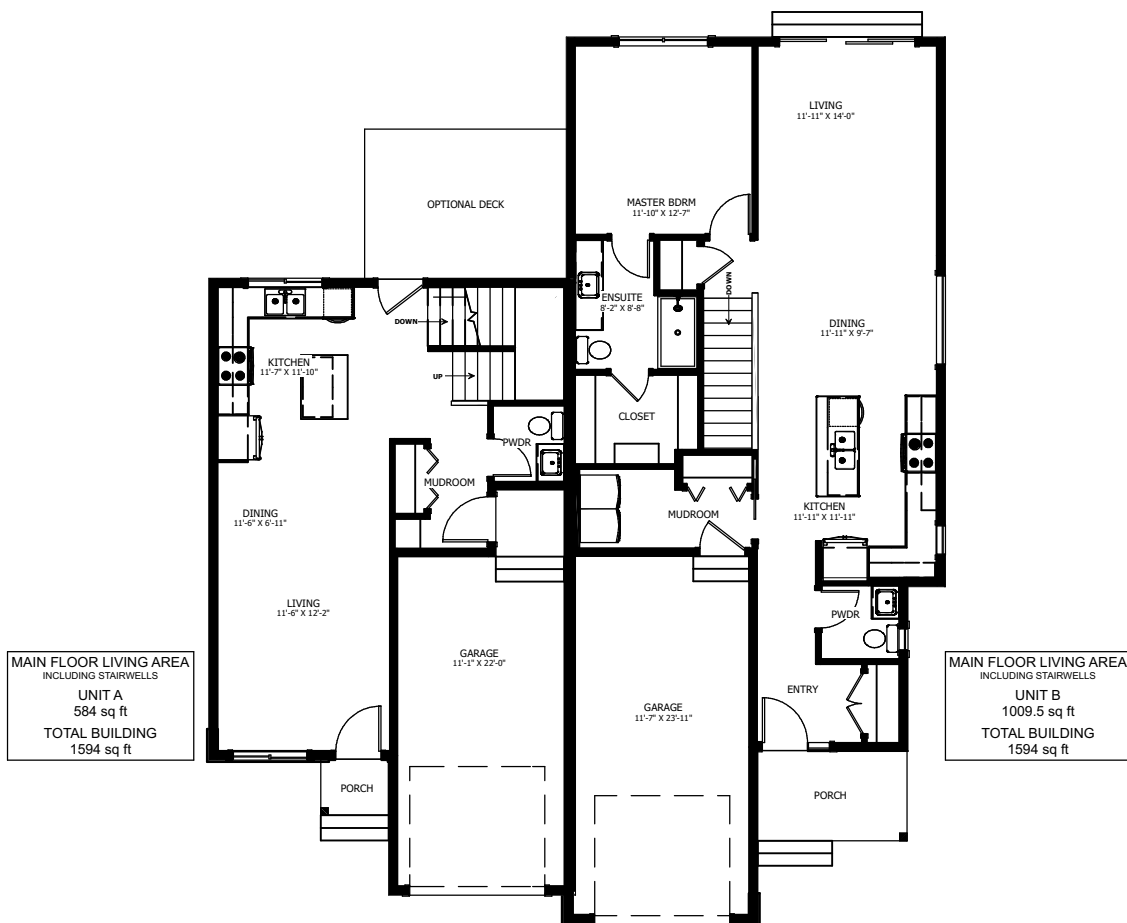
THE HOSMER - ROTH DUPLEX



**WESTWOOD
HEIGHTS**

3+1 BED - 2.5+1 BATH | 1+2 BED - 1.5+1 BATH

49'-0" X 59'-0"



**NEW DAWN
DEVELOPMENTS**

CALL US TODAY: 250-489-1519
WWW.NEWDAWNDEVELOPMENTS.COM

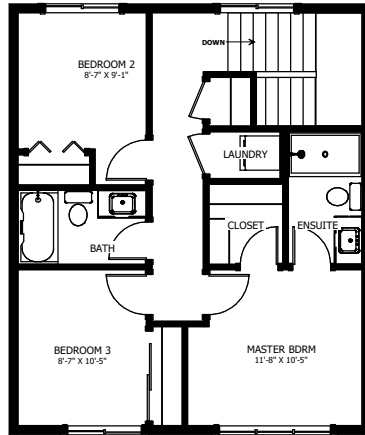
UNIT A - FEATURES & UPGRADES:

- OPTIONAL DEVELOPED BASEMENT WITH 1 BED, 1 BATH, & REC ROOM
- OPTIONAL REAR DECK
- LARGE GARAGE LANDING
- FRONT TO BACK VIEWS
- OPTIONAL MUDROOM BENCH

UNIT B - FEATURES & UPGRADES:

- OPTIONAL DEVELOPED BASEMENT WITH 2 BEDS, 1 BATH, & REC ROOM
- MAIN FLOOR MASTER
- OPTIONAL 2ND SINK IN ENSUITE
- OVERSIZED 'L' SHAPED KITCHEN
- 3 PANEL SLIDING PATIO DOOR

* NOT SHOWN ON PLANS



UPPER FLOOR LIVING AREA
INCLUDING STAIRWELLS
UNIT A
584 sq ft
TOTAL BUILDING
616 sq ft



BASEMENT LIVING AREA
INCLUDING STAIRWELLS
UNIT A
614.5 sq ft
TOTAL BUILDING
1624 sq ft

BASEMENT LIVING AREA
INCLUDING STAIRWELLS
UNIT B
1009.5 sq ft
TOTAL BUILDING
1624 sq ft



NEW DAWN
DEVELOPMENTS

PLANS AND ELEVATIONS ARE APPROXIMATE AND DISPLAY NON-STANDARD FEATURES. ELEVATIONS MAY VARY BY COMMUNITY & THE BUILDER RESERVES THE RIGHT TO MAKE MODIFICATIONS WITHOUT NOTICE. ALL FLOOR PLANS AND ELEVATIONS ARE THE EXCLUSIVE PROPERTY OF NEW DAWN DEVELOPMENTS. ALL RIGHTS RESERVED, INCLUDING THE RIGHT OF REPRODUCTION, IN PART OR IN WHOLE. LAST UPDATED: MARCH 2024