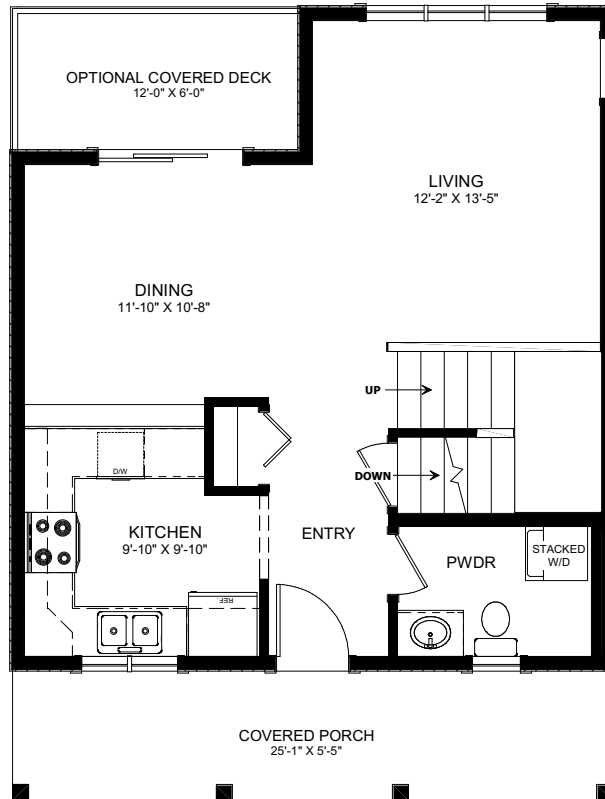




THE FOXTAIL

2 BED - 1.5 BATH

25'-0" X 33'-0"



MAIN FLOOR
LIVING AREA
616 sq ft
INCLUDING 53 sq ft STAIRWELL



NEW DAWN
DEVELOPMENTS

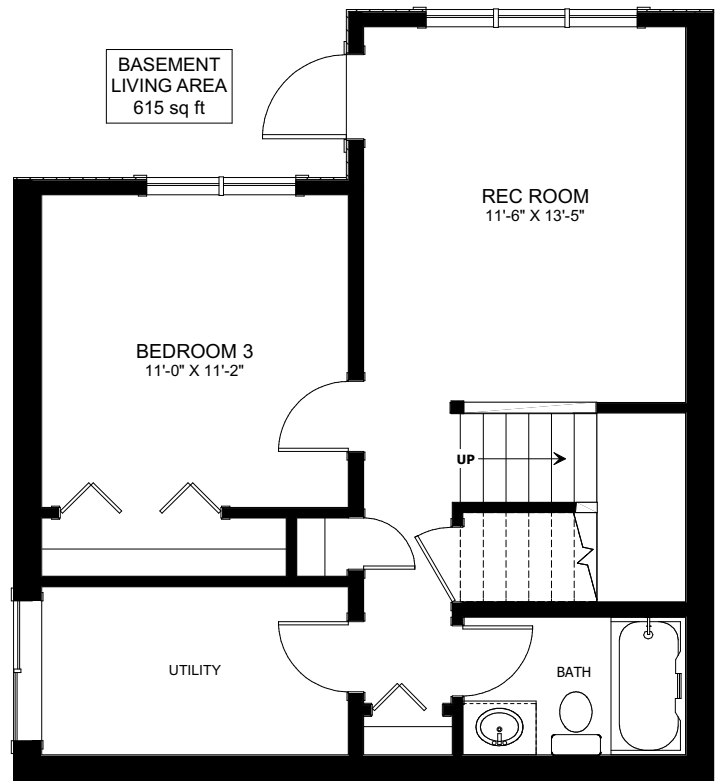
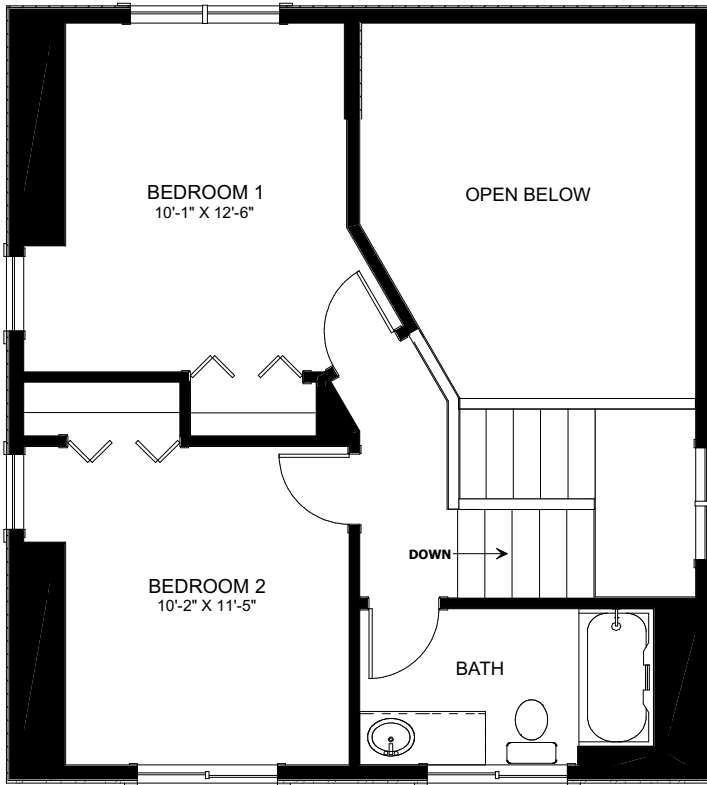
CALL US TODAY: 250-489-1519
WWW.NEWDAWNDEVELOPMENTS.COM

FLOOR PLAN HIGHLIGHTS:

- COZY LOFT BEDROOM
- MAIN FLOOR POWDER ROOM
- LARGE FRONT PORCH
- LARGE WINDOWS
- OPEN CEILING IN LIVING ROOM
- EATING BAR IN KITCHEN

OPTIONAL UPGRADES:

- DEVELOPED BASEMENT WITH ADDITIONAL TWO BEDROOMS, REC, BATH & WALKOUT
- REAR COVERED DECK
- OPEN RAILINGS
- FIREPLACE IN LIVING ROOM



NEW DAWN
DEVELOPMENTS

PLANS AND ELEVATIONS ARE APPROXIMATE AND DISPLAY NON-STANDARD FEATURES. ELEVATIONS MAY VARY BY COMMUNITY & THE BUILDER RESERVES THE RIGHT TO MAKE MODIFICATIONS WITHOUT NOTICE. ALL FLOOR PLANS AND ELEVATIONS ARE THE EXCLUSIVE PROPERTY OF NEW DAWN DEVELOPMENTS. ALL RIGHTS RESERVED, INCLUDING THE RIGHT OF REPRODUCTION, IN PART OR IN WHOLE. LAST UPDATED, JUNE 2022