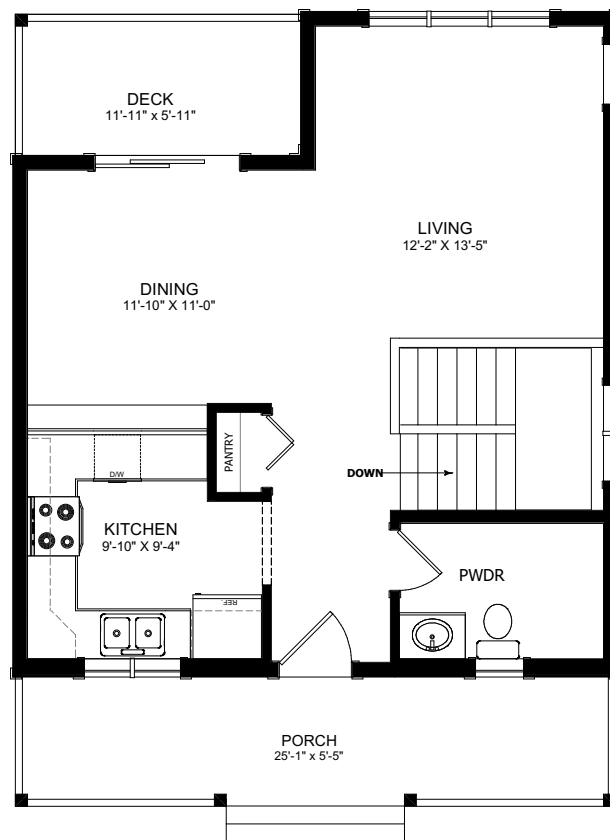




THE SAGE

1 BED - 1.5 BATH

27'-8" x 25'-2"



MAIN FLOOR
LIVING AREA
554 sq ft
INCLUDING 66 sq ft STAIRWELL



NEW DAWN
DEVELOPMENTS

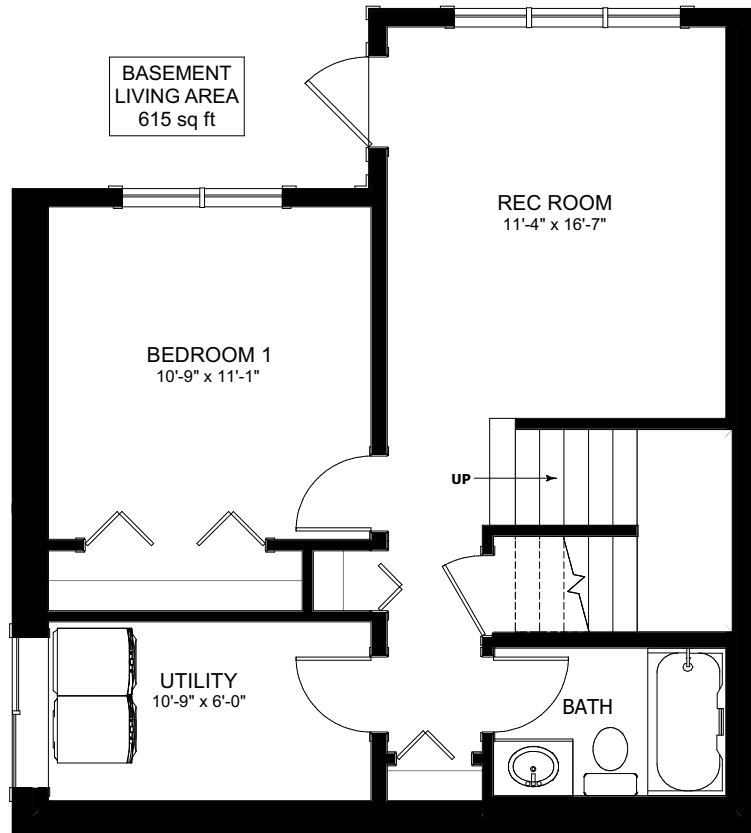
CALL US TODAY: 250-489-1519
WWW.NEWDAWNDEVELOPMENTS.COM

FLOOR PLAN HIGHLIGHTS:

- EATING BAR IN KITCHEN
- REAR DECK
- LARGE FRONT PORCH
- LARGE WINDOWS
- MAIN FLOOR POWDER ROOM
- LARGE MASTER CLOSET

OPTIONAL UPGRADES:

- WALKOUT BASEMENT
- GAS FIXTURE ON DECK FOR BBQ
- FIREPLACE IN LIVING ROOM
- VAULTED CEILING IN KITCHEN & LIVING ROOM
- OPEN RAILINGS



NEW DAWN
DEVELOPMENTS

PLANS AND ELEVATIONS ARE APPROXIMATE AND DISPLAY NON-STANDARD FEATURES. ELEVATIONS MAY VARY BY COMMUNITY & THE BUILDER RESERVES THE RIGHT TO MAKE MODIFICATIONS WITHOUT NOTICE. ALL FLOOR PLANS AND ELEVATIONS ARE THE EXCLUSIVE PROPERTY OF NEW DAWN DEVELOPMENTS. ALL RIGHTS RESERVED, INCLUDING THE RIGHT OF REPRODUCTION, IN PART OR IN WHOLE. LAST UPDATED, JUNE 2022