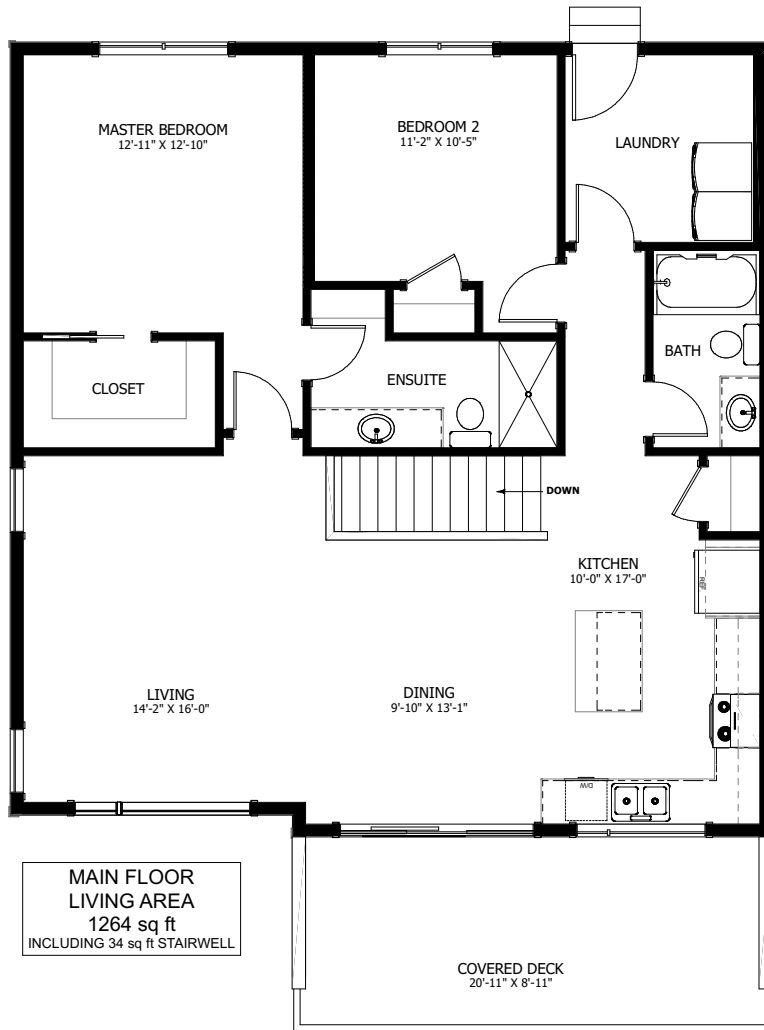


# THE STEEPLES II MODERN

2 BED - 2 BATH

35'-0" X 45'-6"



**NEW DAWN**  
DEVELOPMENTS

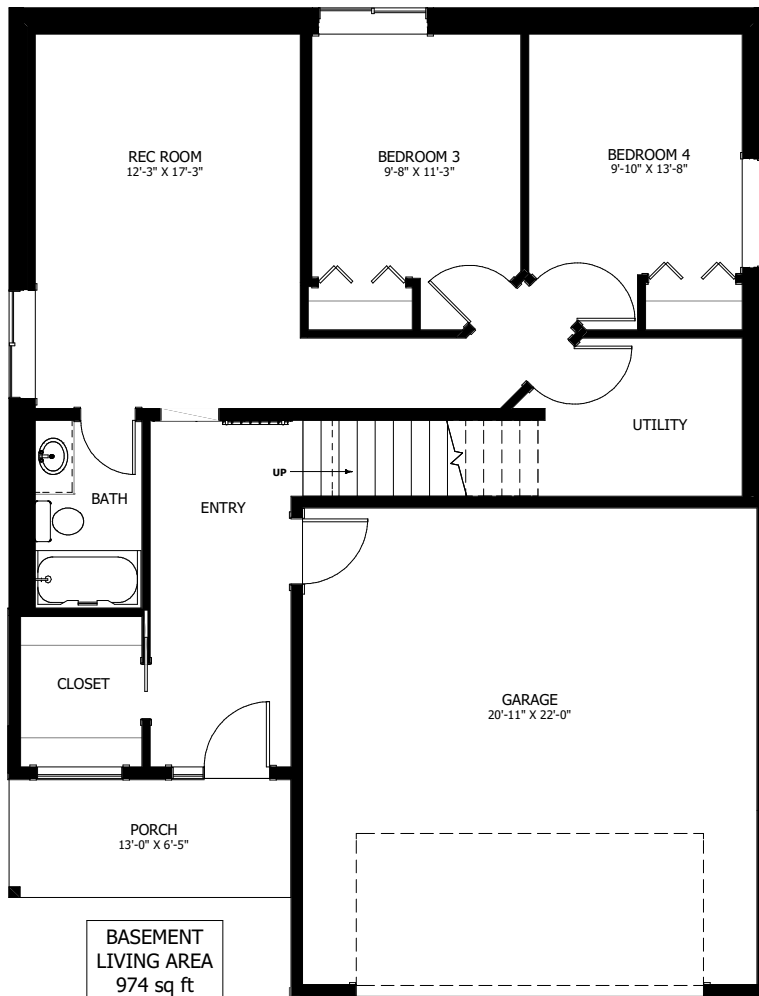
CALL US TODAY: 250-489-1519  
[WWW.NEWDAWNDEVELOPMENTS.COM](http://WWW.NEWDAWNDEVELOPMENTS.COM)

### FLOOR PLAN HIGHLIGHTS:

- COVERED FRONT DECK
- SPACIOUS ENTRY WITH WALK-IN CLOSET
- ISLAND WITH EATING BAR
- LARGE MASTER ENSUITE & WALK-IN CLOSET
- MAIN FLOOR LAUNDRY

### OPTIONAL UPGRADES:

- DEVELOPED ENTRY LEVEL WITH REC ROOM, 2 BEDROOM, & FULL BATH
- VAULTED CEILING IN KITCHEN, LIVING, AND DINING
- GAS FIREPLACE IN LIVING ROOM
- SECOND SINK IN ENSUITE



NEW DAWN  
DEVELOPMENTS

PLANS AND ELEVATIONS ARE APPROXIMATE AND DISPLAY NON-STANDARD FEATURES. ELEVATIONS MAY VARY BY COMMUNITY & THE BUILDER RESERVES THE RIGHT TO MAKE MODIFICATIONS WITHOUT NOTICE. ALL FLOOR PLANS AND ELEVATIONS ARE THE EXCLUSIVE PROPERTY OF NEW DAWN DEVELOPMENTS. ALL RIGHTS RESERVED, INCLUDING THE RIGHT OF REPRODUCTION, IN PART OR IN WHOLE. LAST UPDATED: JUNE 2022