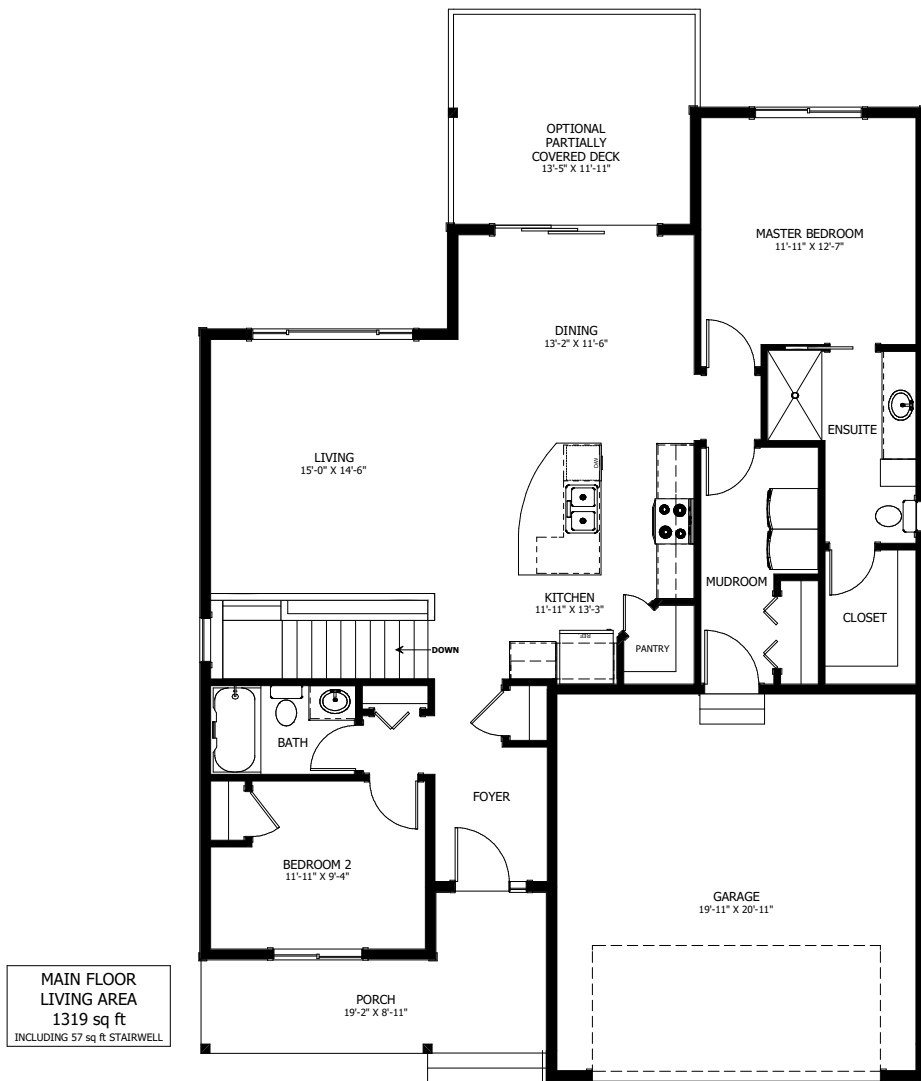


# THE TANGLEFOOT



2 BED - 2 BATH

40'-3" X 54'-0"



NEW DAWN  
DEVELOPMENTS

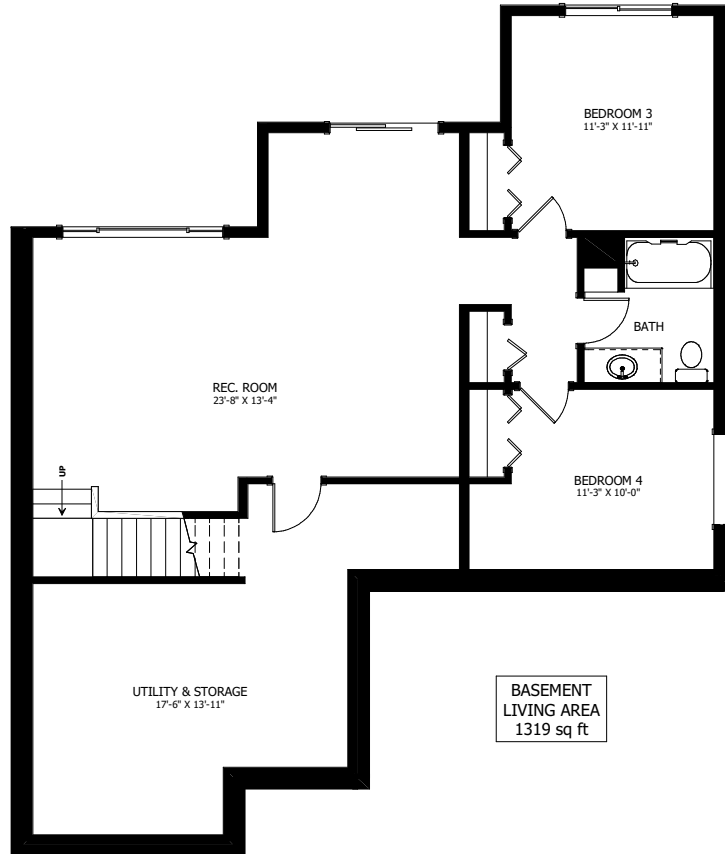
CALL US TODAY: 250-489-1519  
[WWW.NEWDAWNDEVELOPMENTS.COM](http://WWW.NEWDAWNDEVELOPMENTS.COM)

**FLOOR PLAN HIGHLIGHTS:**

- ENSUITE WITH LARGE WALK-IN CLOSET
- CORNER PANTRY
- OVERSIZED FRONT PORCH
- MAIN FLOOR LAUNDRY
- 'L' SHAPED KITCHEN WITH ISLAND

**OPTIONAL UPGRADES:**

- DEVELOPED BASEMENT WITH 2 ADDITIONAL BEDROOMS & BATH
- LOWER LEVEL WALKOUT
- PARTIALLY COVERED REAR DECK
- REAR DECK EXTENSION
- GAS FIREPLACE IN LIVING ROOM



**NEW DAWN  
DEVELOPMENTS**

PLANS AND ELEVATIONS ARE APPROXIMATE AND DISPLAY NON-STANDARD FEATURES. ELEVATIONS MAY VARY BY COMMUNITY & THE BUILDER RESERVES THE RIGHT TO MAKE MODIFICATIONS WITHOUT NOTICE. ALL FLOOR PLANS AND ELEVATIONS ARE THE EXCLUSIVE PROPERTY OF NEW DAWN DEVELOPMENTS. ALL RIGHTS RESERVED, INCLUDING THE RIGHT OF REPRODUCTION, IN PART OR IN WHOLE. LAST UPDATED: JUNE 2022