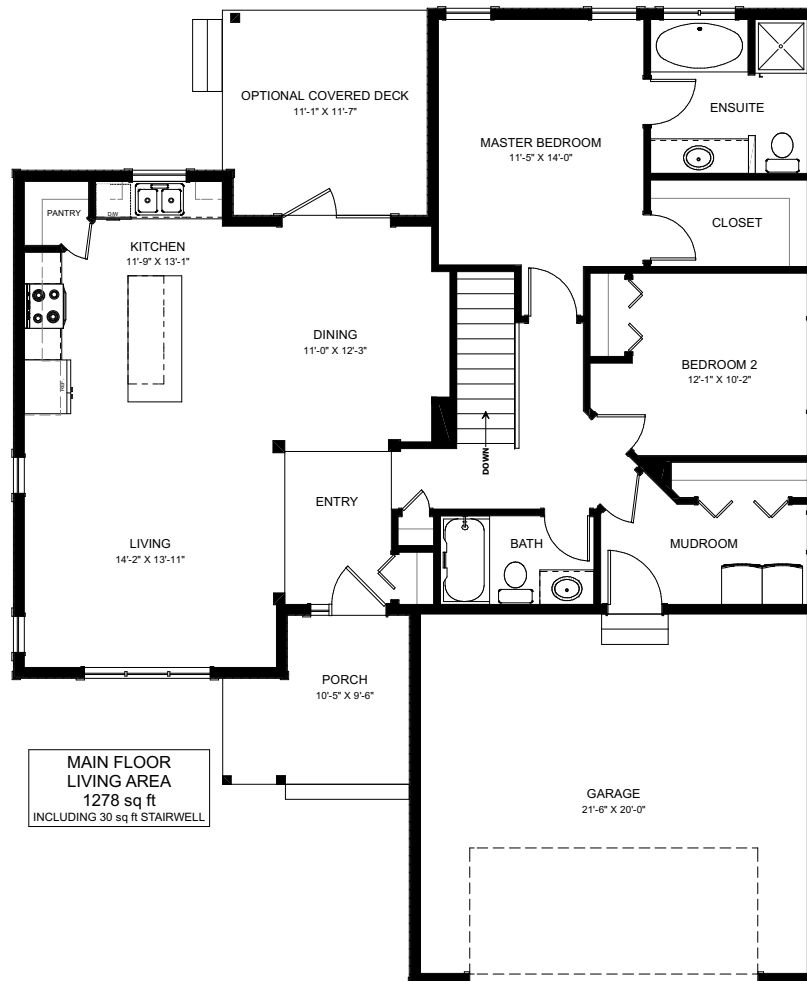


# THE CHINOOK



2 BED - 2 BATH

44'-6" X 54'-0"



NEW DAWN  
DEVELOPMENTS

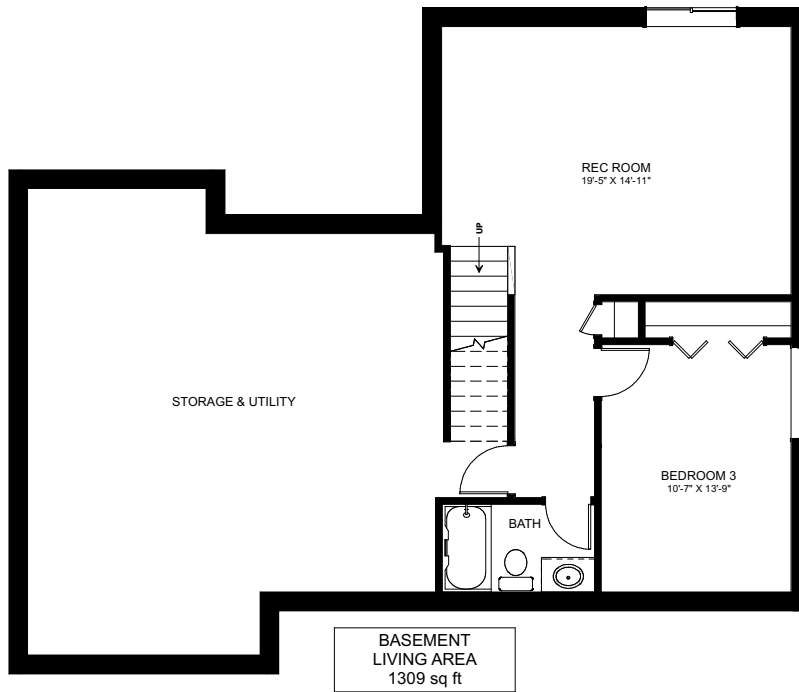
CALL US TODAY: 250-489-1519  
[WWW.NEWDAWNDEVELOPMENTS.COM](http://WWW.NEWDAWNDEVELOPMENTS.COM)

**FLOOR PLAN HIGHLIGHTS:**

- LARGE FRONT LIVING ROOM
- 'L' SHAPED KITCHEN
- 4PC ENSUITE
- KITCHEN ISLAND WITH EATING BAR
- MAIN FLOOR LAUNDRY

**OPTIONAL UPGRADES:**

- DEVELOPED BASEMENT WITH ADDITIONAL BEDROOM & BATH
- GAS FIREPLACE IN LIVING ROOM
- 2ND SINK IN ENSUITE
- 9' HIGH BASEMENT CEILING
- REAR COVERED DECK



**NEW DAWN  
DEVELOPMENTS**

PLANS AND ELEVATIONS ARE APPROXIMATE AND DISPLAY NON-STANDARD FEATURES. ELEVATIONS MAY VARY BY COMMUNITY & THE BUILDER RESERVES THE RIGHT TO MAKE MODIFICATIONS WITHOUT NOTICE. ALL FLOOR PLANS AND ELEVATIONS ARE THE EXCLUSIVE PROPERTY OF NEW DAWN DEVELOPMENTS. ALL RIGHTS RESERVED, INCLUDING THE RIGHT OF REPRODUCTION, IN PART OR IN WHOLE. LAST UPDATED, JUNE 2022