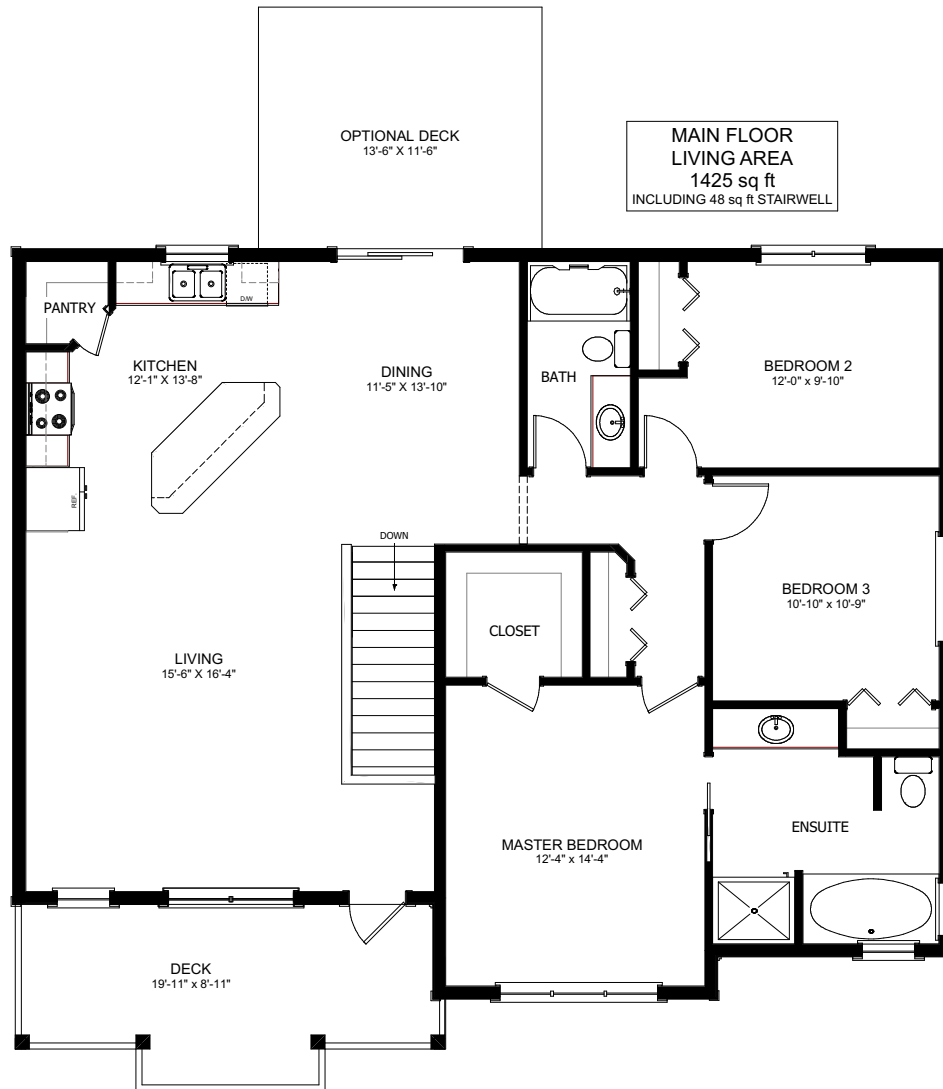


THE TIMBER



3 BED - 2 BATH

44'-6" X 35'-6"



NEW DAWN
DEVELOPMENTS

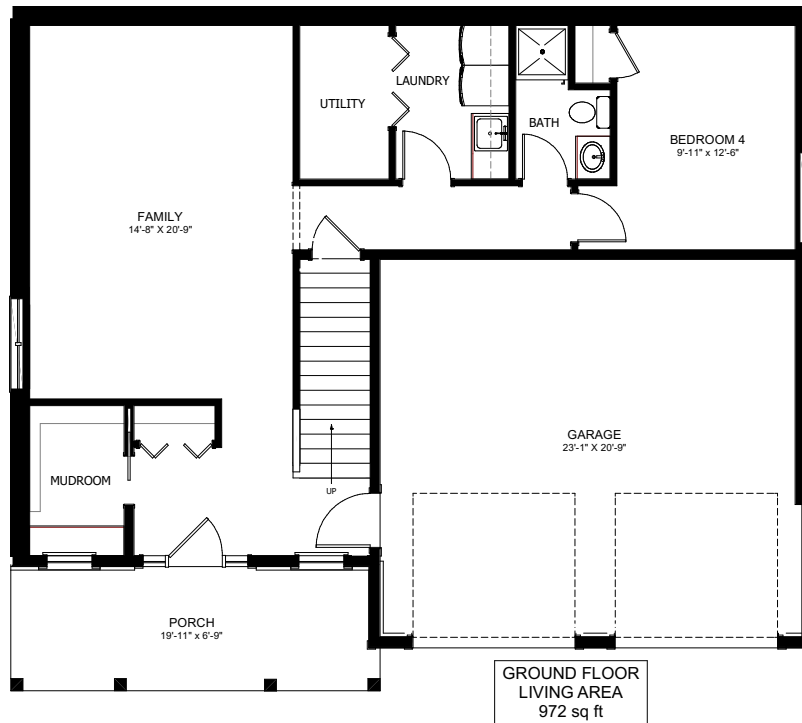
CALL US TODAY: 250-489-1519
WWW.NEWDAWNDEVELOPMENTS.COM

FLOOR PLAN HIGHLIGHTS:

- ISLAND WITH EATING BAR
- TWO CAR GARAGE
- LARGE FRONT PORCH
- MASTER BEDROOM WITH LARGE ENSUITE AND WALK-IN CLOSET
- LARGE WINDOWS

OPTIONAL UPGRADES:

- REAR DECK
- SECOND SINK IN ENSUITE
- GAS FIREPLACE IN LIVING ROOM
- GARAGE MAN DOOR
- VAULTED CEILING IN KITCHEN & LIVING



NEW DAWN
DEVELOPMENTS

PLANS AND ELEVATIONS ARE APPROXIMATE AND DISPLAY NON-STANDARD FEATURES. ELEVATIONS MAY VARY BY COMMUNITY & THE BUILDER RESERVES THE RIGHT TO MAKE MODIFICATIONS WITHOUT NOTICE. ALL FLOOR PLANS AND ELEVATIONS ARE THE EXCLUSIVE PROPERTY OF NEW DAWN DEVELOPMENTS. ALL RIGHTS RESERVED, INCLUDING THE RIGHT OF REPRODUCTION, IN PART OR IN WHOLE. LAST UPDATED, JUNE 2022