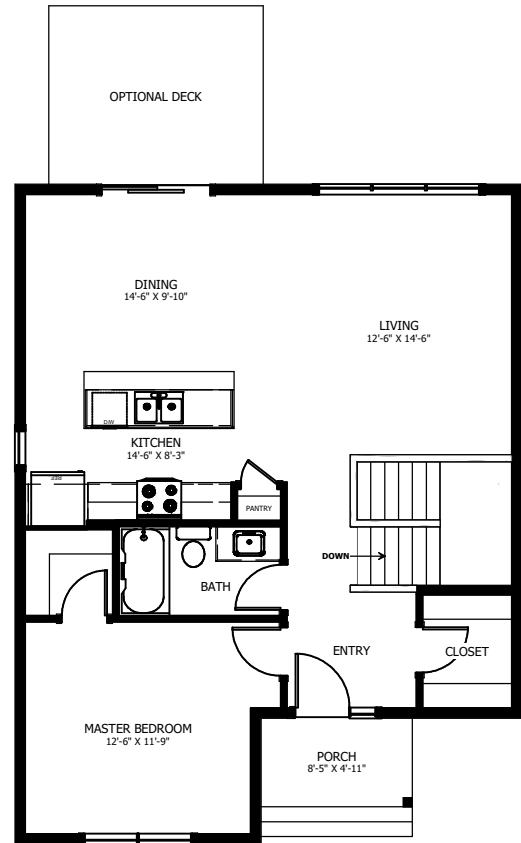
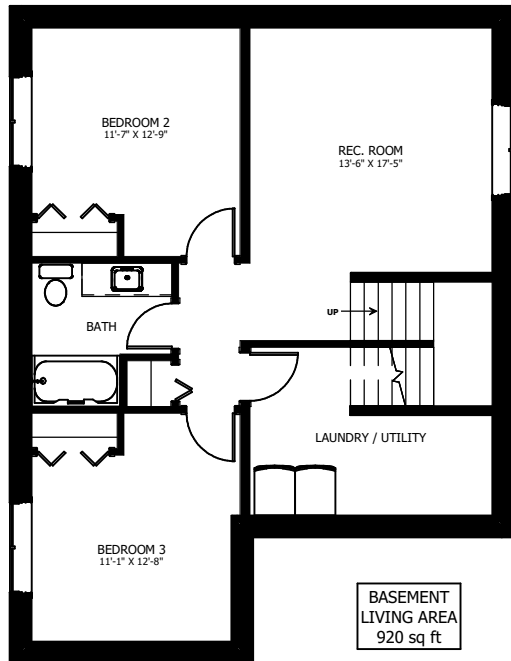




THE KUSKONOOK

3 BED - 2 BATH

28'-0" X 36'-6"



MAIN FLOOR
LIVING AREA
857 sq ft
INCLUDING 64 sq ft STAIRWELL



NEW DAWN
DEVELOPMENTS

CALL US TODAY: 250-489-1519
WWW.NEWDAWNDEVELOPMENTS.COM