

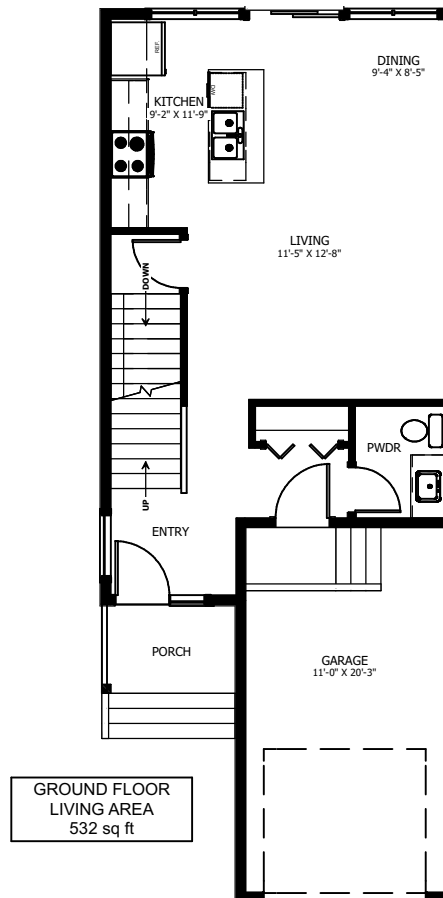
THE TERRION



WESTWOOD
H E I G H T S

3+1 BED - 2.5+1 BATH

19'-6" X 49'-6"



NEW DAWN
DEVELOPMENTS

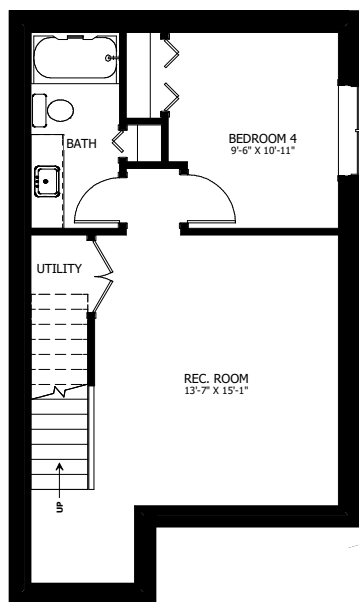
CALL US TODAY: 250-489-1519
WWW.NEWDAWNDEVELOPMENTS.COM

FLOOR PLAN HIGHLIGHTS:

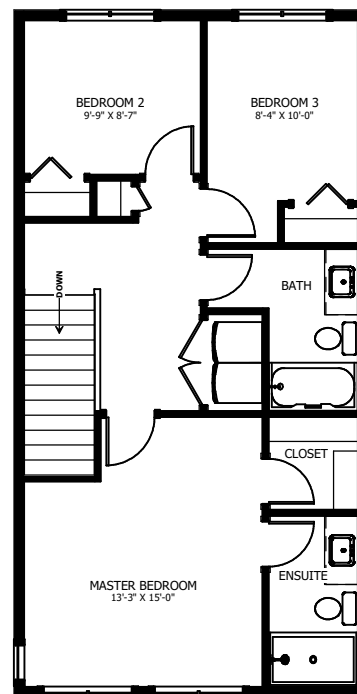
- KITCHEN ISLAND WITH EATING BAR
- MASTER BEDROOM WITH ENSUITE AND WALK-IN CLOSET
- POWDER ROOM ON MAIN FLOOR
- UPPER FLOOR LAUNDRY
- LARGE REAR WINDOWS

OPTIONAL UPGRADES:

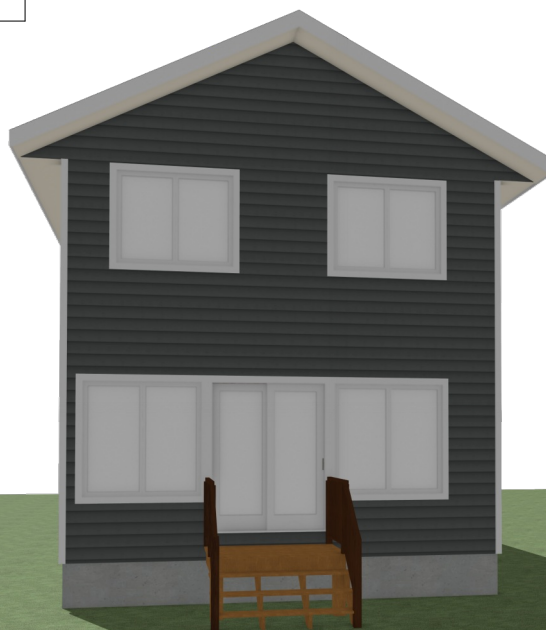
- DEVELOPED BASEMENT WITH ADDITIONAL BEDROOM, REC ROOM, & BATH
- REAR DECK
- U-SHAPED KITCHEN WITH WINDOW ABOVE SINK



BASEMENT
LIVING AREA
595 sq ft



UPPER FLOOR
LIVING AREA
697 sq ft



NEW DAWN
DEVELOPMENTS

PLANS AND ELEVATIONS ARE APPROXIMATE AND DISPLAY NON-STANDARD FEATURES. ELEVATIONS MAY VARY BY COMMUNITY & THE BUILDER RESERVES THE RIGHT TO MAKE MODIFICATIONS WITHOUT NOTICE. ALL FLOOR PLANS AND ELEVATIONS ARE THE EXCLUSIVE PROPERTY OF NEW DAWN DEVELOPMENTS. ALL RIGHTS RESERVED, INCLUDING THE RIGHT OF REPRODUCTION, IN PART OR IN WHOLE. LAST UPDATED: APRIL 2024