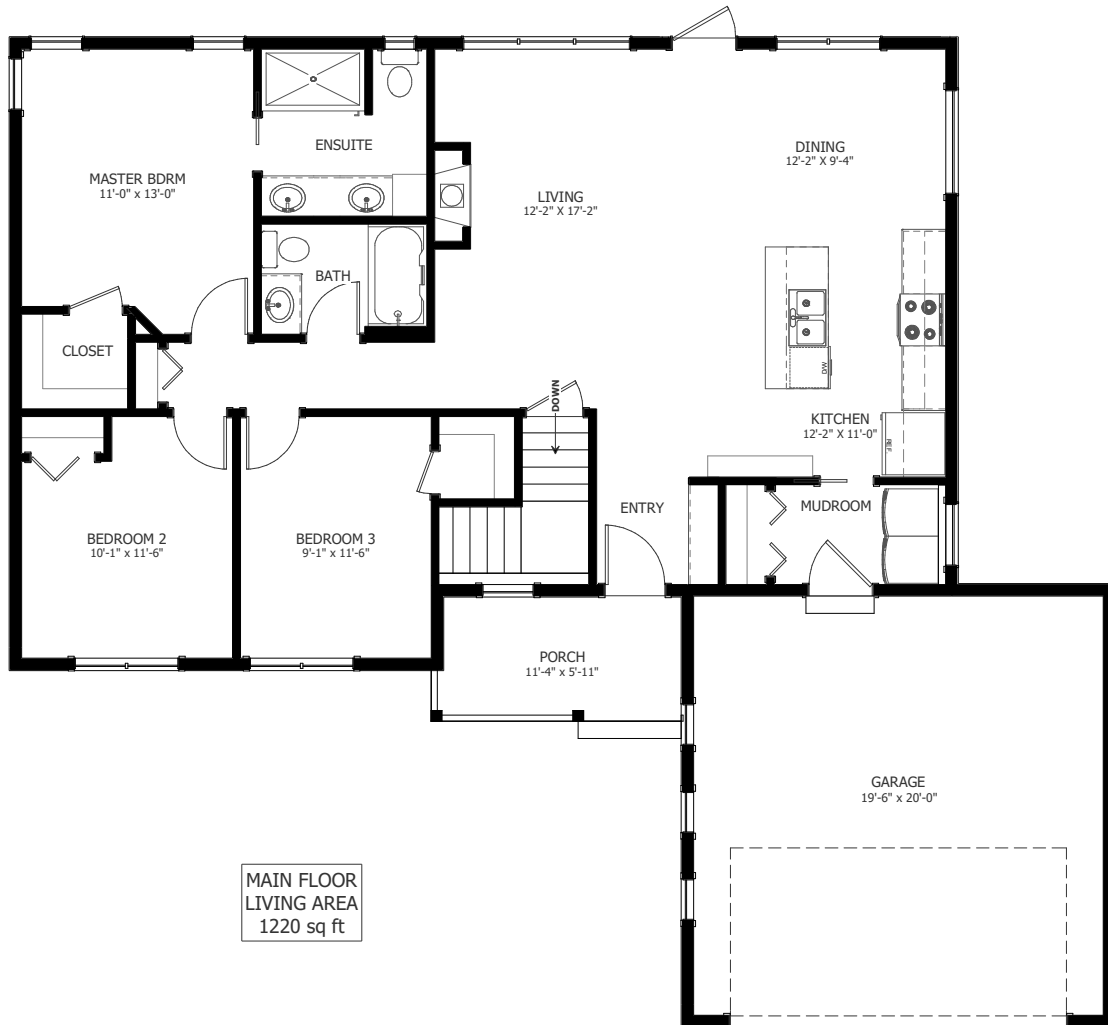




THE WAXWING

1213 SQ FT BUNGALOW

3 BED
2 BATH
52'-6" X 47'-0"



NEW DAWN
DEVELOPMENTS

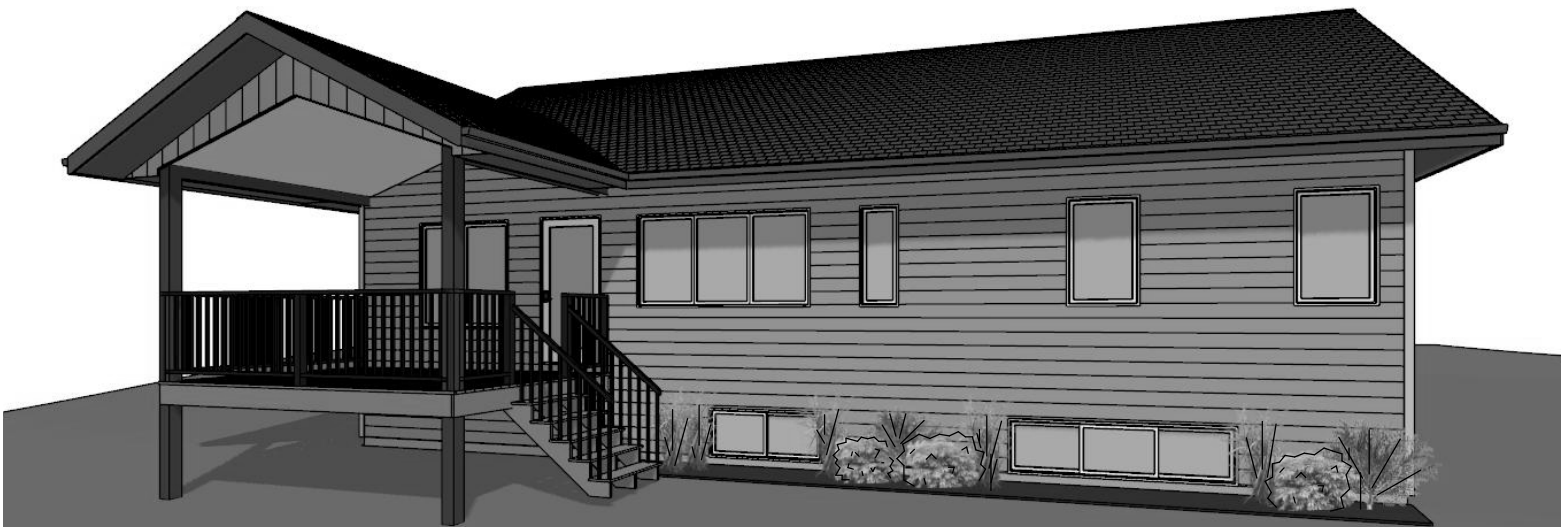
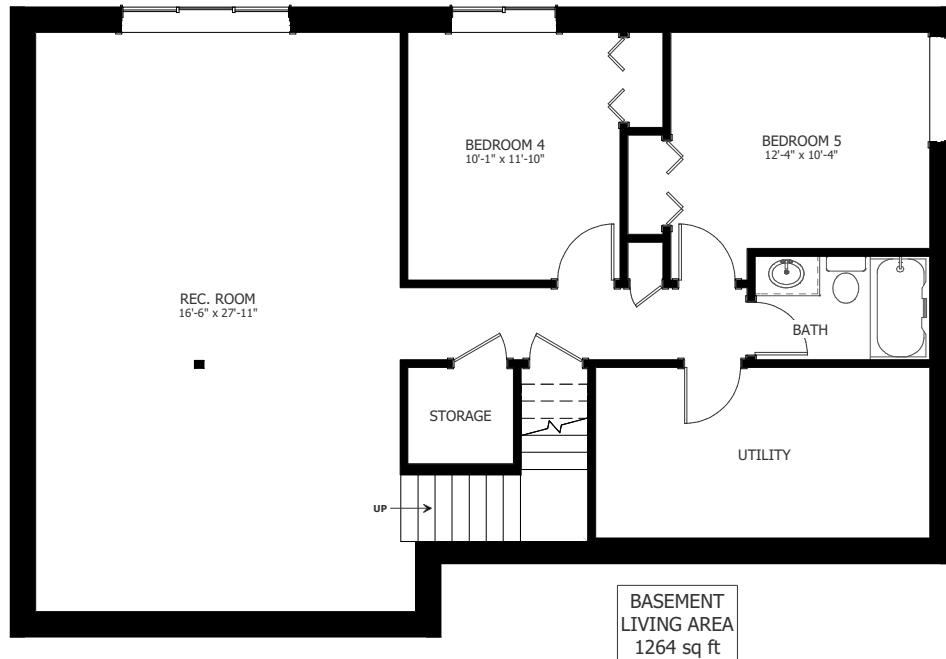
CALL US TODAY: 250-489-1519
WWW.NEWDAWNDEVELOPMENTS.COM

FLOOR PLAN HIGHLIGHTS:

- MASTER BEDROOM WITH ENSUITE & WALK-IN CLOSET
- MAIN FLOOR LAUNDRY
- LARGE FRONT PORCH
- WALK-IN CLOSET IN BEDROOM 2

OPTIONAL UPGRADES:

- DEVELOPED BASEMENT WITH 2 BEDROOMS & 1 BATH
- REAR COVERED DECK
- BUILT-IN BENCH IN ENTRY
- FULL HEIGHT PANTRY CABINETS IN KITCHEN



**NEW DAWN
DEVELOPMENTS**

PLANS AND ELEVATIONS ARE APPROXIMATE AND DISPLAY NON-STANDARD FEATURES. ELEVATIONS MAY VARY BY COMMUNITY & THE BUILDER RESERVES THE RIGHT TO MAKE MODIFICATIONS WITHOUT NOTICE. ALL FLOOR PLANS AND ELEVATIONS ARE THE EXCLUSIVE PROPERTY OF NEW DAWN DEVELOPMENTS. ALL RIGHTS RESERVED, INCLUDING THE RIGHT OF REPRODUCTION, IN PART OR IN WHOLE. LAST UPDATED: APRIL 2018