

THE FISHER



2 BED - 1.5 BATH

STARTING AT \$339,000 + GST
PRICE VALID UNTIL MARCH 31ST, 2019

39'-9" X 51'-6"



NEW DAWN
DEVELOPMENTS

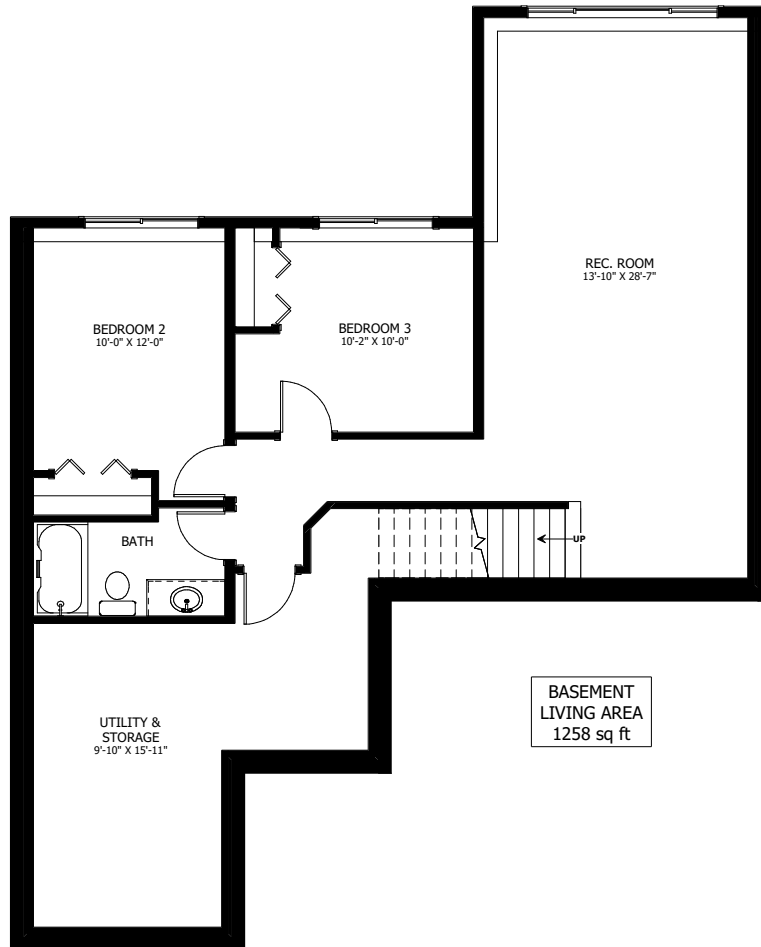
CALL US TODAY: 250-489-1519
WWW.NEWDAWNDEVELOPMENTS.COM

FLOOR PLAN HIGHLIGHTS:

- SUITED FOR LOTS 4, 6, 7, 9-11, 13, 14, & 16-19
- REAR LIVING & DINING ROOM VIEWS
- REAR MASTER BEDROOM VIEWS
- OVERSIZED 'L' SHAPED KITCHEN
- 3 PANEL SLIDING PATIO DOOR
- LARGE REAR DECK

OPTIONAL UPGRADES:

- DEVELOPED BASEMENT WITH REC. ROOM, 2 BEDROOMS, & BATH
- LOWER LEVEL WALK-OUT
- COVERED REAR DECK
- GAS FIREPLACE IN LIVING ROOM
- MUDROOM BENCH



NEW DAWN
DEVELOPMENTS

PLANS AND ELEVATIONS ARE APPROXIMATE AND DISPLAY NON-STANDARD FEATURES. ELEVATIONS MAY VARY BY COMMUNITY & THE BUILDER RESERVES THE RIGHT TO MAKE MODIFICATIONS WITHOUT NOTICE. ALL FLOOR PLANS AND ELEVATIONS ARE THE EXCLUSIVE PROPERTY OF NEW DAWN DEVELOPMENTS. ALL RIGHTS RESERVED, INCLUDING THE RIGHT OF REPRODUCTION, IN PART OR IN WHOLE. PRICES VALID TO MARCH 31, 2019.