

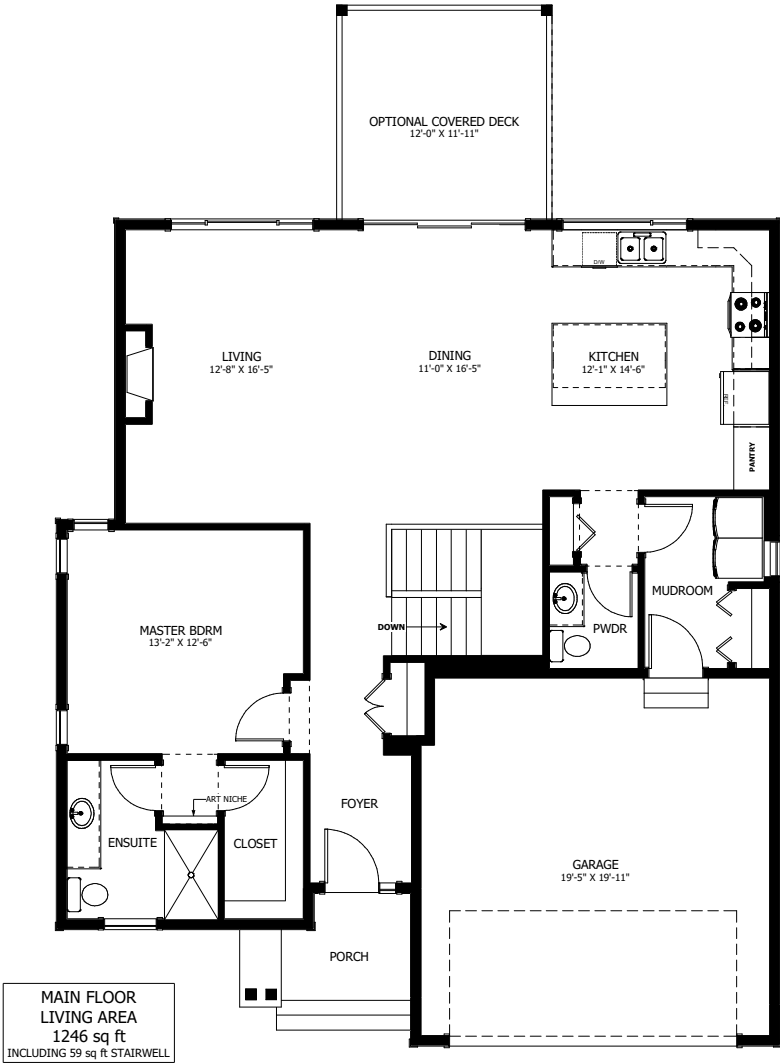
# THE PATMORE



1 BED - 1.5 BATH

STARTING AT \$334,000 + GST  
PRICE VALID UNTIL MARCH 31ST, 2019

40'-3" X 46'-0"



MAIN FLOOR  
LIVING AREA  
1246 sq ft  
INCLUDING 59 sq ft STAIRWELL



NEW DAWN  
DEVELOPMENTS

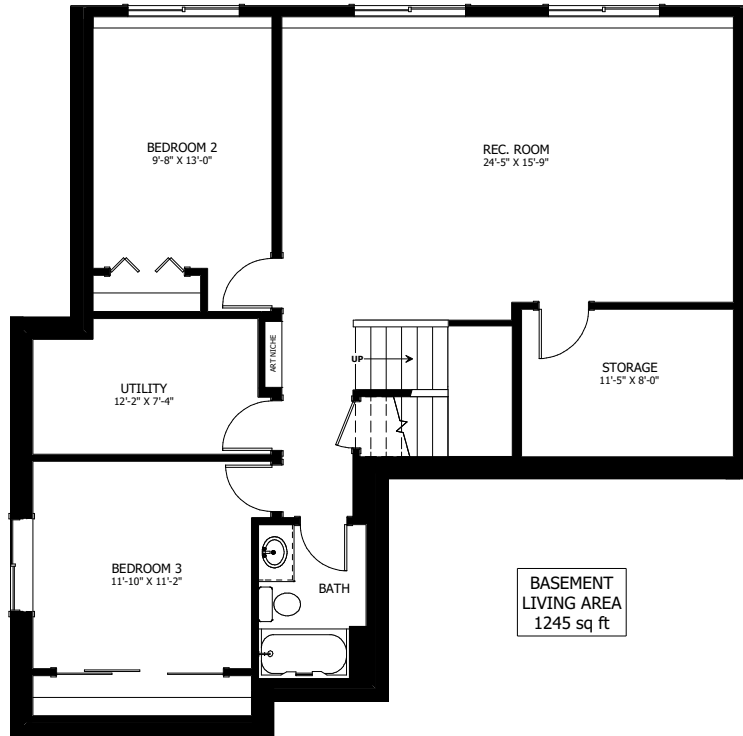
CALL US TODAY: 250-489-1519  
[WWW.NEWDAWNDEVELOPMENTS.COM](http://WWW.NEWDAWNDEVELOPMENTS.COM)

### FLOOR PLAN HIGHLIGHTS:

- SUITED FOR LOTS 5-7 & 9-18
- REAR LIVING, DINING & KITCHEN VIEWS
- OVERSIZED 'L' SHAPE KITCHEN WITH LARGE ISLAND
- 3-PANEL SLIDING GLASS DOOR TO DECK
- LARGE WALK-IN CLOSET

### OPTIONAL UPGRADES:

- DEVELOPED BASEMENT WITH REC. ROOM, 2 BEDROOMS, & BATH
- LOWER LEVEL WALK-OUT
- VAULTED CEILINGS
- SECOND SINK IN ENSUITE
- GAS FIREPLACE IN LIVING ROOM



**NEW DAWN**  
DEVELOPMENTS

PLANS AND ELEVATIONS ARE APPROXIMATE AND DISPLAY NON-STANDARD FEATURES. ELEVATIONS MAY VARY BY COMMUNITY & THE BUILDER RESERVES THE RIGHT TO MAKE MODIFICATIONS WITHOUT NOTICE. ALL FLOOR PLANS AND ELEVATIONS ARE THE EXCLUSIVE PROPERTY OF NEW DAWN DEVELOPMENTS. ALL RIGHTS RESERVED, INCLUDING THE RIGHT OF REPRODUCTION, IN PART OR IN WHOLE. PRICES VALID TO MARCH 31, 2019.